

# Environmental Justice in Anaerobic Digestion: Green Solutions, Just Outcomes

**Sharon Lewis**

Connecticut Coalition for Economic  
and Environmental Justice

**Bobbi Wilding**

Clean+Healthy



**Quick Poll:**

**Who's in the room?**

# What we'll discuss today

Refresh: what is Anaerobic digestion?

Understanding what it means to site a facility in an EJ area

Learning about the community

Effective Community Engagement

Beyond regulatory requirements

Q+A

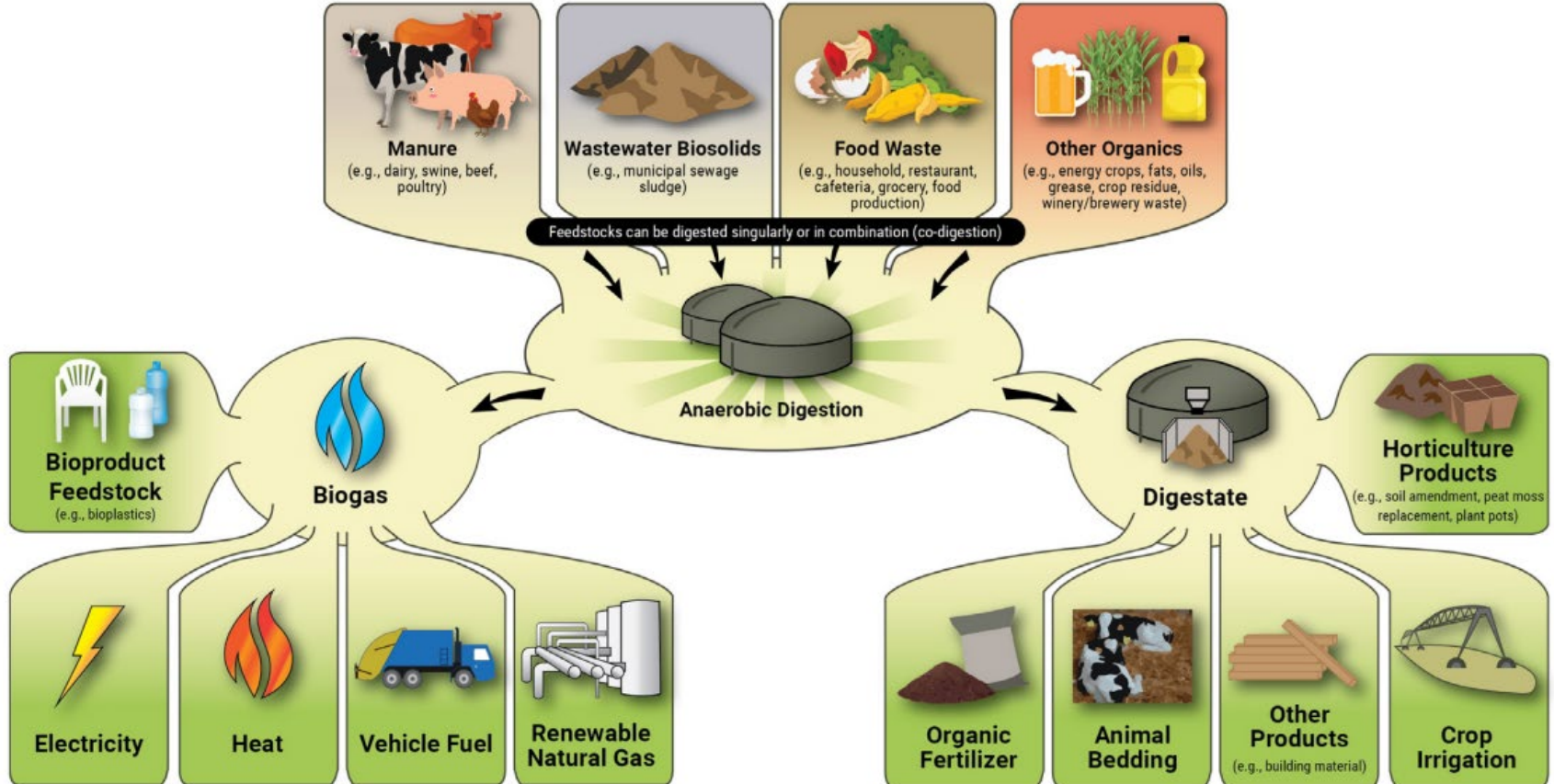
Brief survey for feedback







# Anaerobic Digestion Basics



# Defining “Environmental Justice” Communities



Each state may define details differently, but generally these communities:

- LOW WEALTH - many people below the poverty line
  - BLACK, INDIGENOUS, or other PEOPLE OF COLOR
  - Already have a disproportionate number of facilities that can cause environmental and health problems
  - Reduced quality of life
-

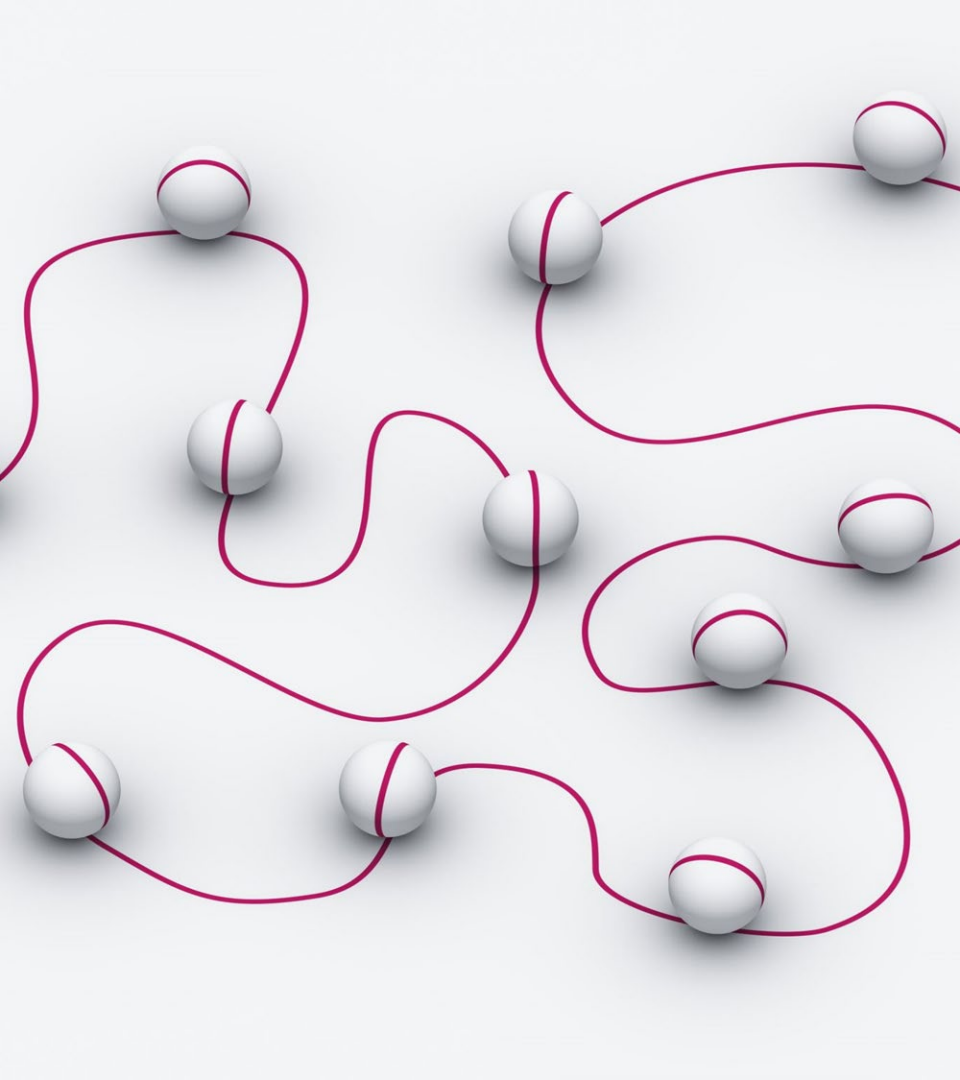


# UNDERSTAND THE COMMUNITY

## Engage with INFORMATION *PRIOR TO PRESENTATIONS*

- SURVEYS
- FOCUS GROUPS
- INTERVIEWS
- ZOOM CALLS
- SOCIAL MEDIA
- **BUILD RELATIONSHIPS**
- *Identify and Partner with KEY stakeholders*





# DEVELOP A COMMUNICATIONS STRATEGY

**WHO:** Identify the KEY stakeholders

**WHAT:** *What do you want to communicate?*

**WHEN:** *Communicate EARLY and OFTEN.*

**WHERE:** *Community decides the locations for in-person meetings, the preferred social media as well as Zoom call frequency and times.*



- What are the geographic constraints for siting the facility
- (e.g., proximity to food waste sources)?
- What are the socioeconomic conditions in the communities identified as suitable venues for the planned AD facility?
- Which locations in non-EJ areas are viable?
- What are the health and environmental impacts of the AD facility's operations?
- What safeguards, contingency, and emergency plans will be
- put in place to ensure the safety of the surrounding community?

# Before you pick a location: Key questions

---



**SELF DETERMINATION : A**  
*meaningful SEAT AT THE TABLE*



**SEEK INPUT**

Project Design

Location

Operations

**Communications must be two-way**



Providing balanced and objective information about new programs or services, and about the reasons for choosing them	Inviting feedback on alternatives, analyses, and decisions related to new programs or services	Working with community members to ensure that their aspirations and concerns are considered at every stage of planning and decision-making. We also engage their assets as partners to implement solutions.	Enabling community members to participate in every aspect of planning and decision-making for new programs or services. Community members actively produce outcomes.	Giving community members sole decision-making authority over new programs or services, and lead work to implement solutions. Professionals only serve in consultative and supportive roles
--	--	---	--	--

Newsletters  
Fact sheets  
Open house

Surveys  
Focus group  
Community meeting

Community organizing,  
Workshops

Advisory board,  
engage and fund as partner

Support full governance & partnership

Hold DIALOGUE “Early and Often”

Translate into relevant languages

In locations community members are comfortable

In words that are accessible

BEFORE deciding on a location

WHILE developing the project

BEFORE completing a draft permit

Consider Community Benefits

# **Beyond Common Regulatory Requirements**

---





NOISE



TRAFFIC



ODORS



PESTS



ENVIRONMENTAL  
IMPACTS – WATER  
AND SOIL POLLUTION



HEALTH CONCERNS  
AND IMPACTS

**ADDRESS  
CONCERNS:**  
*Listen*



