

# Reduce, Reuse, Recycle: A Story of Contaminated Material The Owner's Perspective



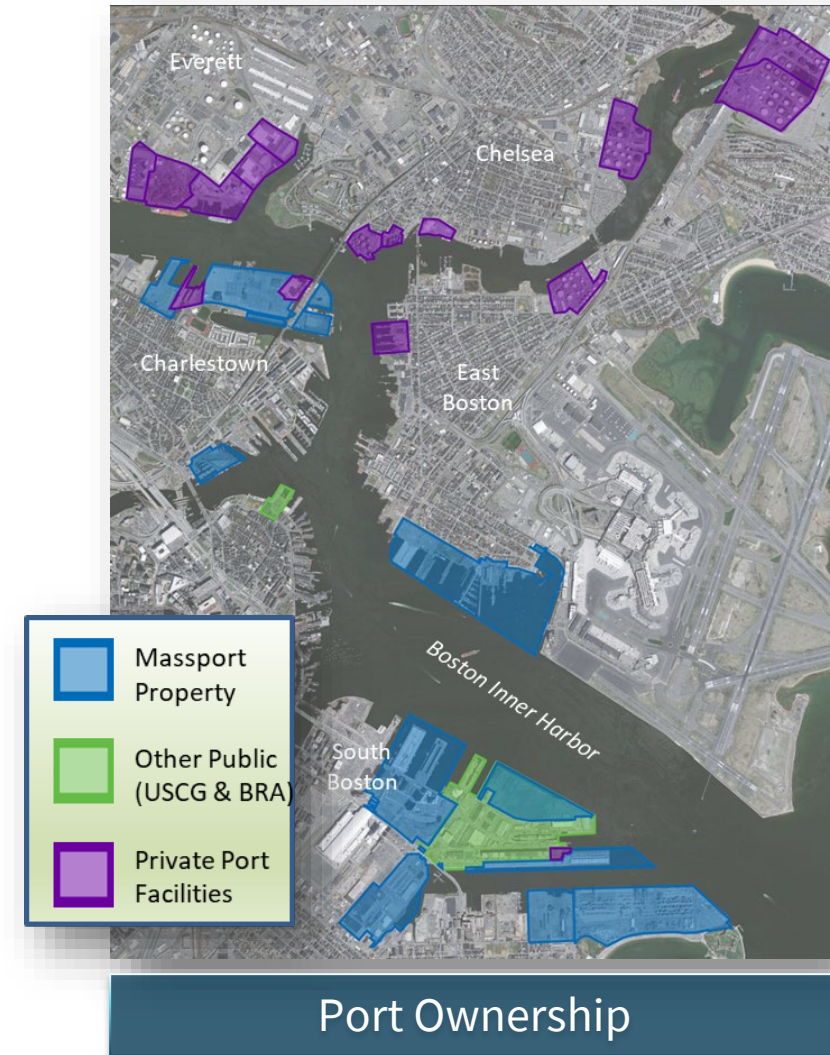
Chester Myers, P.E., CCM | Massachusetts Port Authority

# The Port of Boston is vital to the regional economy

- \$8.2B economic impact
- 50,000 total jobs (7,000 direct jobs)
- Federal tax revenues of \$203M
- State & local tax revenues of \$136M
- 2,500 NE businesses use the port

Entity	Employees
Mass. General	14,752
Brigham&Women's	11,229
Boston University	9,783
Children's Hospital	7,903
State Street	7,800
<b>Port of Boston</b>	<b>7,091</b>
Beth Israel	6,695
Fidelity	5,500
Harvard Graduate Schools	5,132
Northeastern	4,484

The Port Compared to Boston's Largest Employers



# Conley Terminal is New England's Only Full-Service Container Terminal



## Global access for the area's businesses and industry as well as its 14 million consumers

- Shipping Lines: MSC, Ocean Alliance, THE Alliance
- Weekly Service to/from Asia, North Europe, and Latin America
- Efficient connectivity to interstate highway system

## Center of international commerce

- Top Imports: Seafood, Furniture, Beverages & Spirits, Plastics
- Top Exports: Paper, Logs & Lumber, Scrap Metal, Seafood
- Import To Export Ratio = 1.4:1

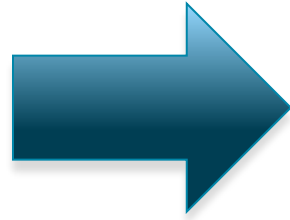


## A diverse collection of companies use Conley Terminal to import and export their products

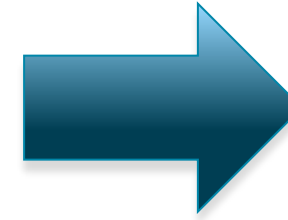
- Top Customers: IFP (Kraft), America Chung Nam, Schnitzer Steel, Heineken, Christmas Tree Shops, BJ's Wholesale Club, Ogo Fibers, Ocean Spray, Jordan's Furniture

# Shipping Lines are Driving the Change in Industry

Shipping lines build larger vessels to create economies of scale



Panama Canal expands to accommodate larger vessels and keep pace with Suez Canal



Ports invest millions in water and on land to stay competitive

## Evolution of Container Vessel Size



Courtesy of AAPA

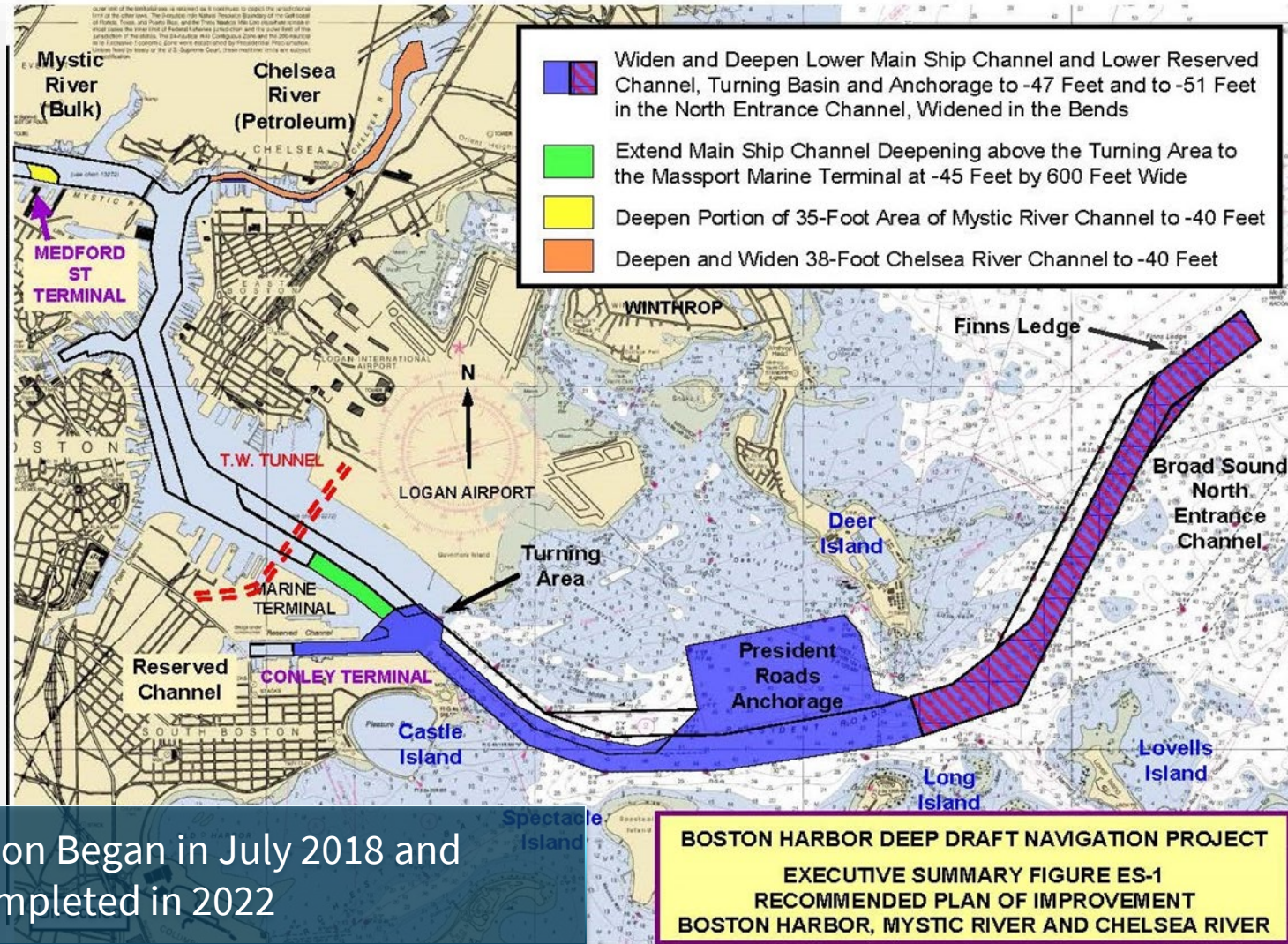


Courtesy of [www.cranehotline.com](http://www.cranehotline.com)



Jan Svendsen

# Federal Navigational Dredging: Improvement Project



Construction Began in July 2018 and Will Be Completed in 2022

# Expanded Conley Container Terminal



Expanded Terminal Yard  
& New Berth 10  
(former Coastal Oil Site)

Existing Terminal

Logan  
International  
Airport

# Former Coastal Oil Site - 1974



# Conley Terminal Modernization Program

- Harbor Deepening - \$350M
- Conley Dedicated Freight Corridor & Buffer Park - \$75M
- Conley FASTLANE Program - \$103M
  - Berth 11 Structural Rehab & Berth 12 New Fenders
  - New Terminal Broadband Network & LED Yard Lighting
  - Berths 11 & 12 Backland Pavement Rehab
  - Berth 11 Deepening
  - Phase I Coastal Yard Buildout & New Refrigerated Reefer Racks
  - New Gate Processing Facilities
  - Terminal Equipment Improvements (new RTGs, yard tractors)
  - Structural Crane Painting
- Conley BUILD Program - \$66M
  - Terminal Technologies Improvements
  - Cypher-E Freight Corridor
  - Terminal Container Storage
- Conley Clean Truck Program - \$2.2M
- New Berth 10 - \$215M



- Title

Questions?