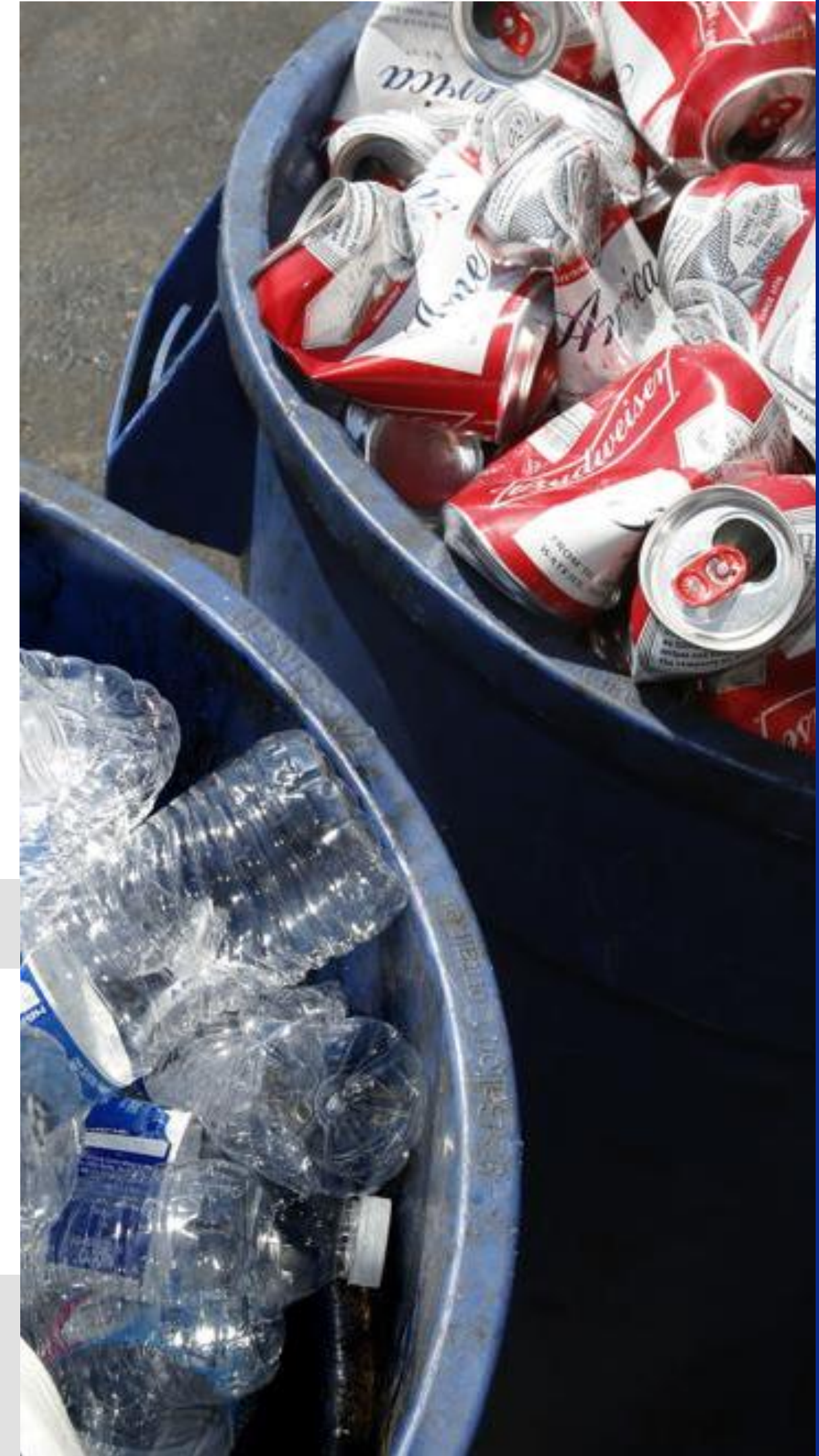


BUILDING A CIRCULAR MATERIALS ECONOMY: INCREASING PCR RECYCLED CONTENT IN PACKAGING

**CALIFORNIA'S AB 793 (TING) MANDATORY
RECYCLED CONTENT IN PLASTIC
BEVERAGE CONTAINERS – 2020**

Mark Murray,
Californians Against Waste





HISTORIC ENVIRONMENTAL LAW TO ESTABLISH MINIMUM RECYCLED CONTENT STANDARDS- AB 793 (TING, 2020)

In order to encourage efficient use of recyclable plastics, AB 793 set a series of graduated minimum recycled content levels for all plastic beverage containers, ramping up to 50% by 2030 - the highest standard worldwide.

While California has one of the nation's most successful Bottle Bills, more than 3 billion bottles are still dumped in the landfill every year. Additionally, since China implemented its National Sword policy in early 2018, much of the recyclable material we once exported is now ending up in landfills or the environment.

AB 793 will help to build demand and ensure domestic end-use markets for plastic beverage containers collected for recycling.



RATES AND DATES



ON JANUARY 1, 2022

beverage manufacturers are required to utilize at least 15% recycled plastic.



ON JANUARY 1, 2025

beverage manufacturers are required to utilize at least 25% recycled plastic



ON JANUARY 1, 2030

beverage manufacturers are required to utilize at least 50% recycled plastic



PENALTY STRUCTURE FOR MANUFACTURERS THAT FALL SHORT

Beginning January 1, 2023, beverage manufacturers that do not meet the minimum content requirements are subject to annual administrative penalties. Penalties will be assessed beginning March 1, 2024 for non-compliance.

Penalties will be calculated at a rate of \$0.20 per pound based on the shortfall of recycled content used compared to the minimum content requirement.

Beverage manufacturers may pay penalties in quarterly installments or arrange an alternative payment schedule.

Beverage manufacturers who fail to meet the minimum content standard may submit a corrective action plan. The penalties assessed on the beverage manufacturer may be reduced if CalRecycle approves the corrective action plan.



2020 PLASTIC BEVERAGE CONTAINER SALES & RECYCLING

Material	Containers Sold	Containers Recycled	Recycling Rate
PET	12,802,225,149	8,761,768,073	68%
HDPE	187,886,759	101,804,440	54%
Total 3-7	217,353,706	38,172,205	18%

LARGEST BEVERAGE PRODUCER/DISTRIBUTORS AND THEIR 2020 PCR LEVELS

Beverage Manufacturer Name	rPET (tons)	Total PET (tons)	Percent rPET
Coca Cola North America	8,734	85,785	10%
Niagara Bottling, LLC	12,794	65,429	20%
Pepsi Cola Bottling Group	8,897	48,648	18%
CG Roxane - Crystal Geyer AlpineSpring Water	9,425	25,344	37%
Nestle Waters US	7,866	24,038	33%
American Bottling Company	0	9,563	0%
Premium Waters, Inc.	2,902	4,026	72%
Crystal Geyser Water Company	0	3,562	0%
Lassonde Pappas and Company, Inc	0	2,315	0%
Mott's LLP	0	2,194	0%

Thank You

**Building a Circular Materials Economy:
Increasing PCR Recycled Content in
Packaging**

**California's AB 793 (Ting) Mandatory Recycled
Content in Plastic Beverage Containers – 2020**

**Mark Murray,
Californians Against Waste**

EMAIL:

murray@cawrecycles.org

WEBSITE:

www.cawrecycles.org

