

# Casella's Net Climate Benefit

Getting the metrics right so we can manage  
what matters most

10/2021

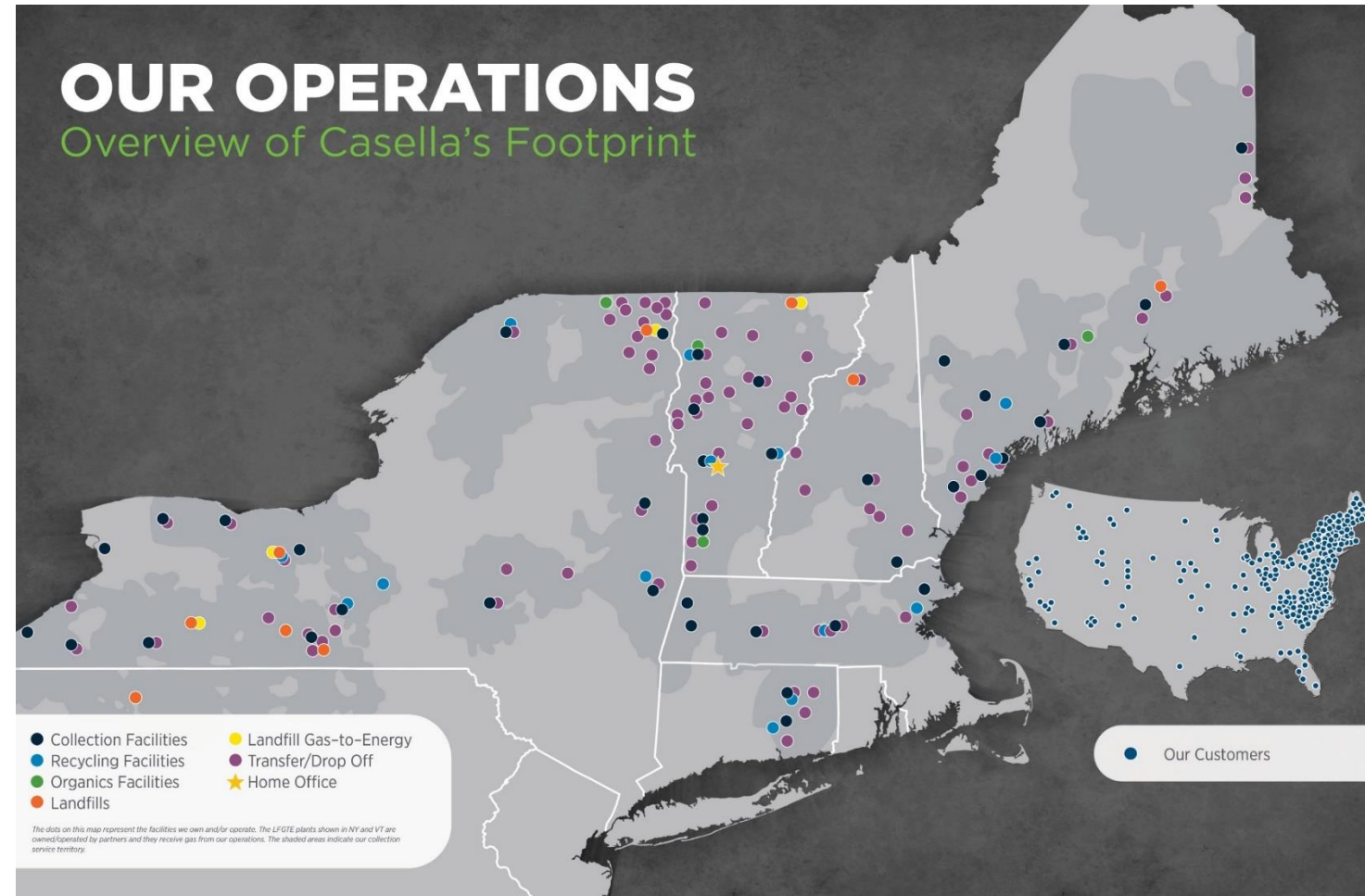


ESTABLISHED 1975

RECYCLING • SOLUTIONS • ORGANICS • COLLECTION • ENERGY • LANDFILLS

# About Casella

- Founded in 1975 as a single truck operation in Rutland, VT
- \$768MM revenue for 12-months ended 9/30/20
- Operations throughout the Northeastern U.S. and Customers nationwide
- Nearly 3,000 employees serving over 300,000 customers and 550,000 households
- Recovering over 600,000 tons of recyclables and 400,000 tons of organics per year
- Since 2005, cut companywide carbon emissions by >50%



ESTABLISHED 1975

RECYCLING • SOLUTIONS • ORGANICS • COLLECTION • ENERGY • LANDFILLS

casella.com

# Casella's Climate Commitment

2005

Began measuring our carbon footprint

Founding partner of the EPA Climate Leaders program

The only solid waste and recycling company to volunteer

2010

Reduced emissions to 45% below 2005

Achieved our first target

Recognized in 2012 with a Climate Leadership Award

2020

Began reporting climate strategy through CDP

Announced new goal: Reduce to 40% below 2010 by 2030

Committed to improve our Net Climate Benefit Factor to 5x by 2030



ESTABLISHED 1975

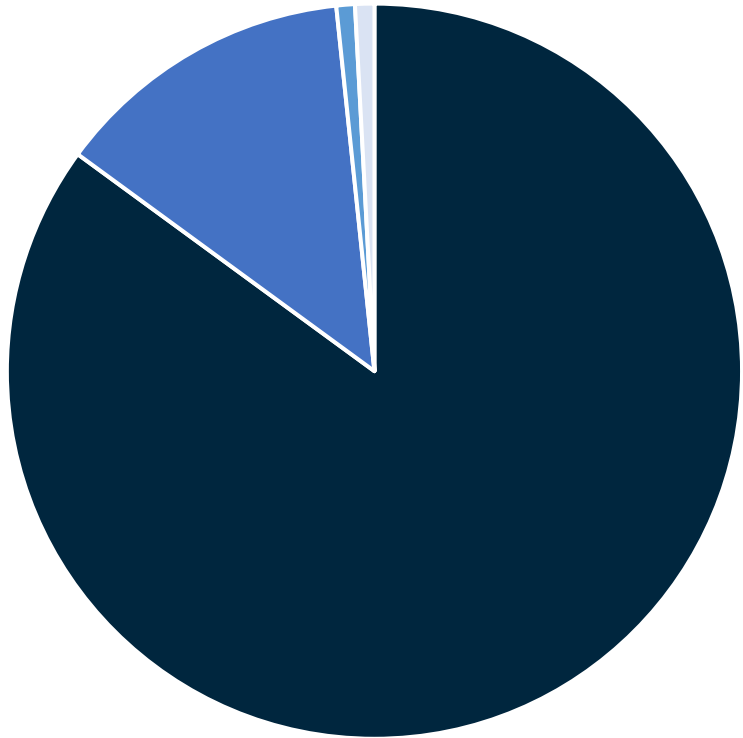
RECYCLING • SOLUTIONS • ORGANICS • COLLECTION • ENERGY • LANDFILLS

[casella.com](https://casella.com)

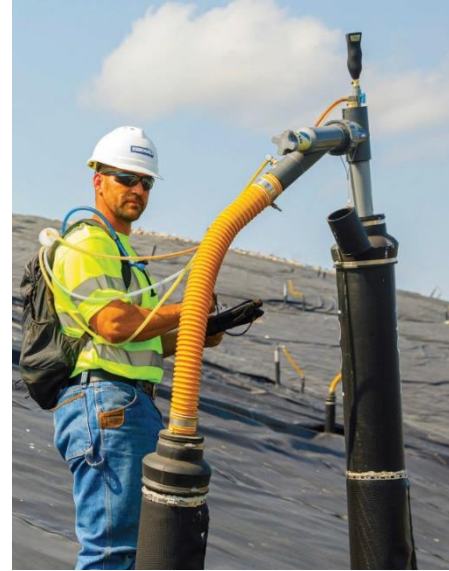
• 3

# Scope 1 and 2 Emissions

2020 Greenhouse Gas Emissions



■ Landfills ■ Mobile Combustion ■ Stationary Combustion ■ Electricity



ESTABLISHED 1975

RECYCLING • SOLUTIONS • ORGANICS • COLLECTION • ENERGY • LANDFILLS

casella.com

# What's Missing?



## Recycling

- 600,000+ tons per year of recyclables returned to economy



## Carbon Sequestration

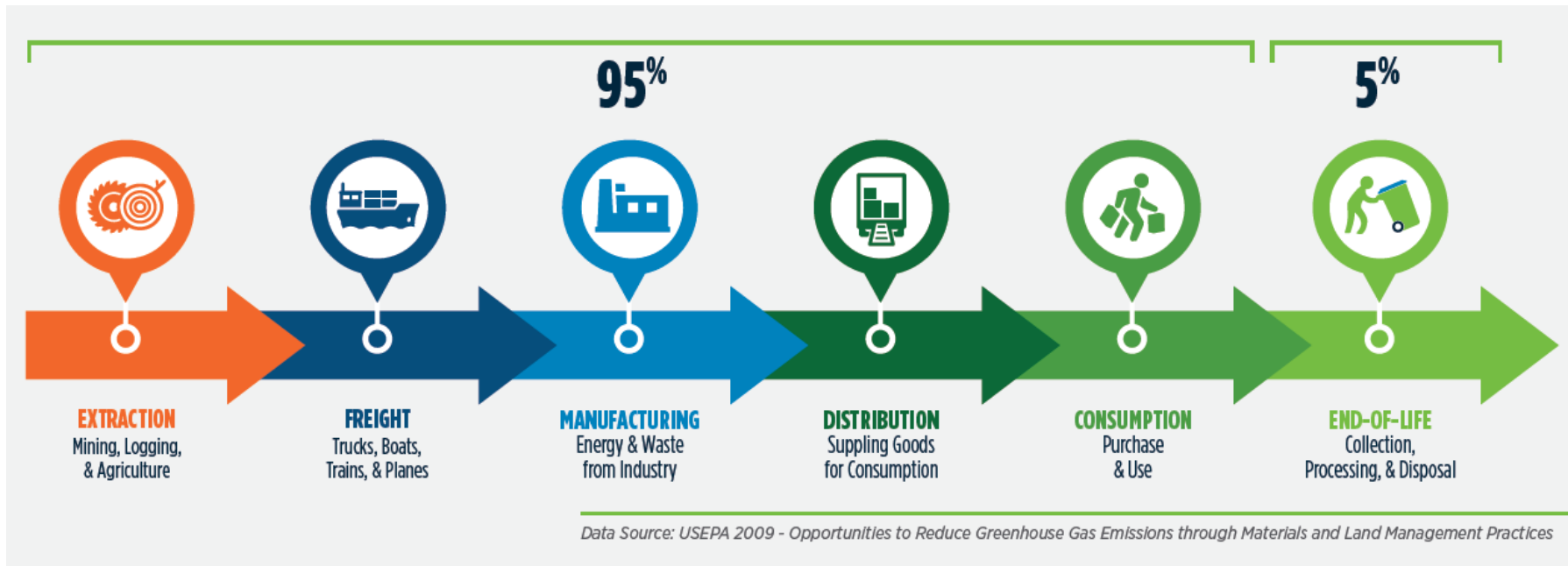
- 400,000+ tons per year of organics residuals returned to soil
- Significant carbon sequestered in landfill waste mass



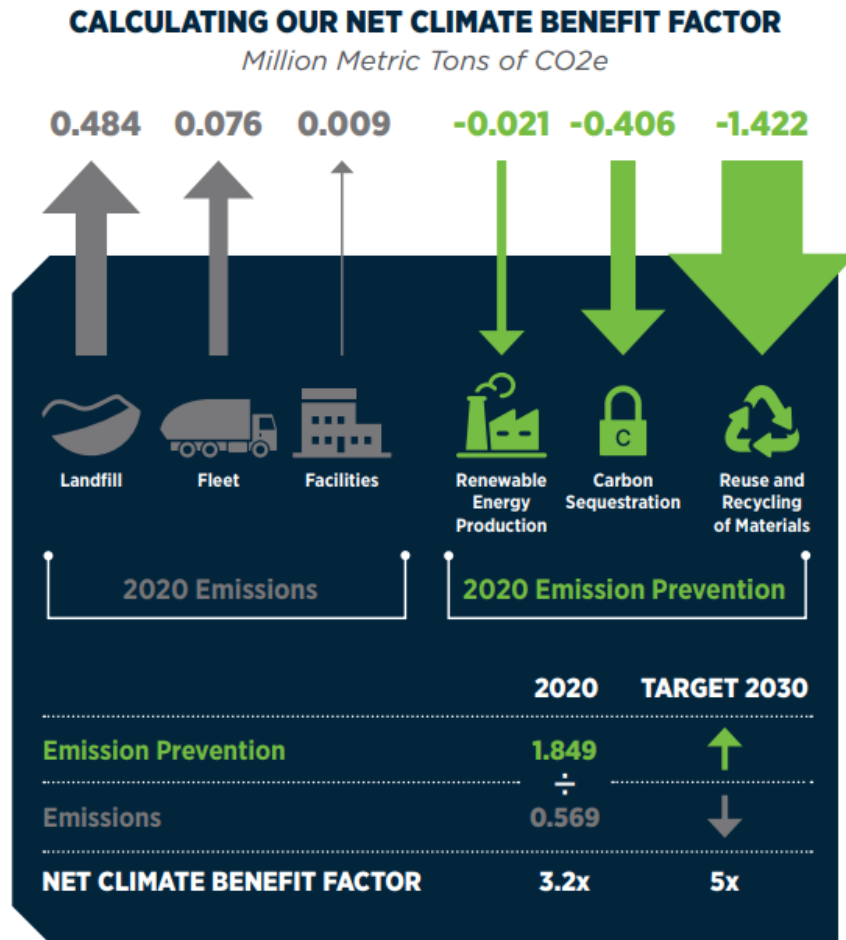
## Renewable Energy

- 87,000 MWH of electricity produced from landfill biogas

# Life Cycle Perspective



# Net Climate Benefit Factor



## Recycling

- **MRF Recycling tons x EPA WARM Factors**
- Industrial Recycling

## Sequestration

- **MSW tons landfilled x EPA WARM Factors**
- Organics composted, digested, and land applied
- Other waste disposed

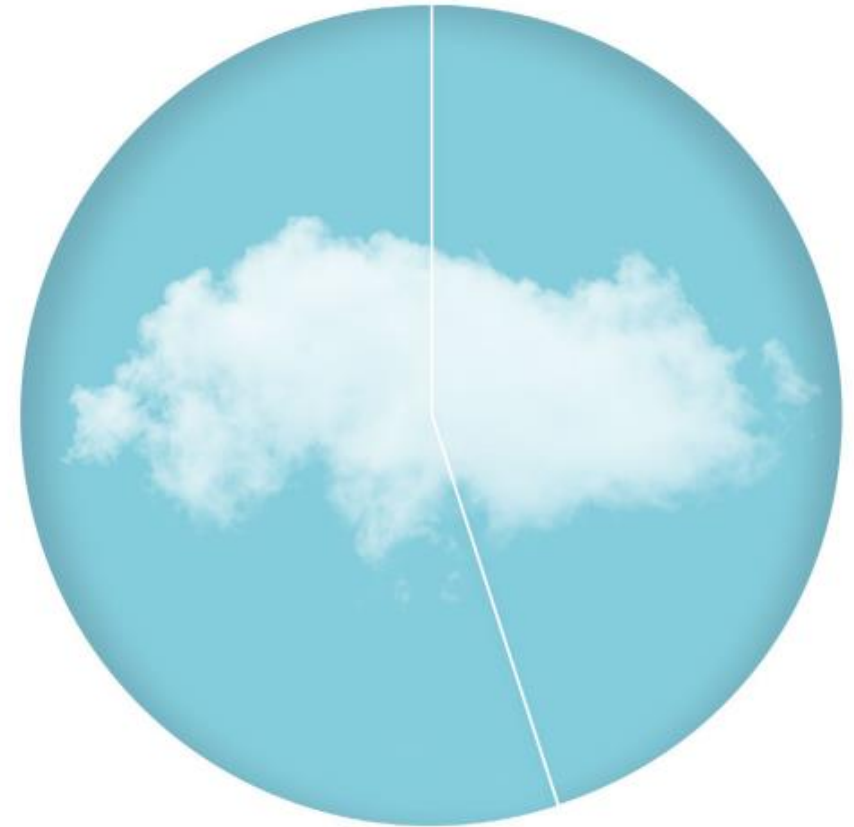
## Renewable Energy

- **MWH generated x eGRID factors (NEWE)**

\*Items in gray are not yet captured in the calculation; working on documenting the appropriate factors

# Why does it matter?

- Under a Scope 1 and 2 focus, Casella's climate strategy would work only on emissions from landfills and trucks
- This ignores the vast climate *benefit* we can achieve
- Energy is the primary focus of climate policy, but accounts for only 55% of GHG emissions.
- The remaining 45% come from things like resource extraction and land use practices.
- Our industry is perfectly poised to advance the circular economy and tackle these non-energy emissions.
- When we measure and manage things the right way, recycling emerges as a clear and essential climate solution.



Ellen MacArthur Foundation, Completing the Picture: How the Circular Economy Tackles Climate Change (2019) [www.ellenmacarthurfoundation.org/publications](http://www.ellenmacarthurfoundation.org/publications)



## Thank You

Abbie Webb  
Sustainability Director  
[abbie.webb@casella.com](mailto:abbie.webb@casella.com)

To learn more, please visit:

[casella.com](https://casella.com)



ESTABLISHED 1975

RECYCLING • SOLUTIONS • ORGANICS • COLLECTION • ENERGY • LANDFILLS