

# Hurricane Sandy - Debris Management Lessons Learned

June 25, 2014

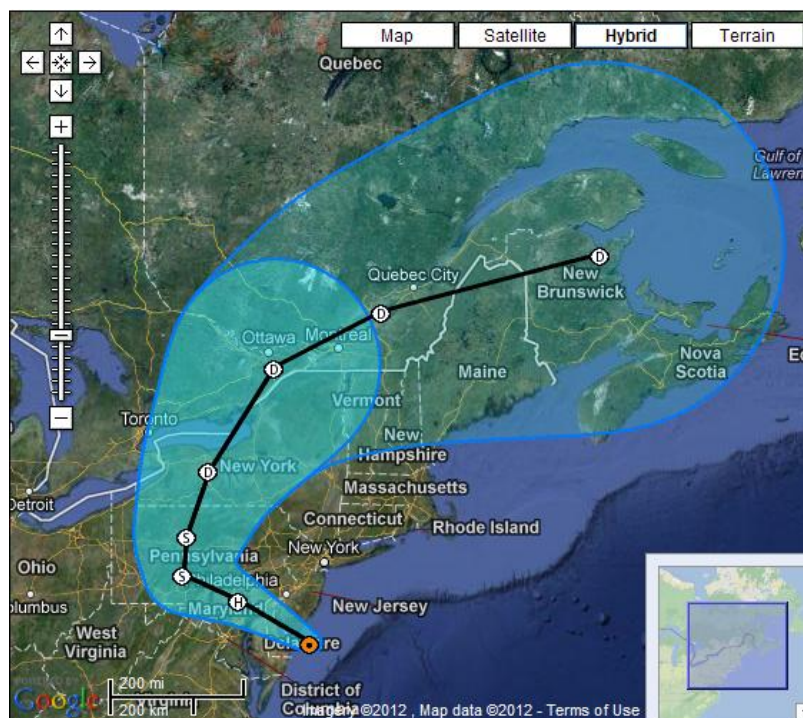
Frank Gagliardo & Joseph Schiavone

Interagency Debris Management Task Force (IDMTF)

NEWMOA Webinar

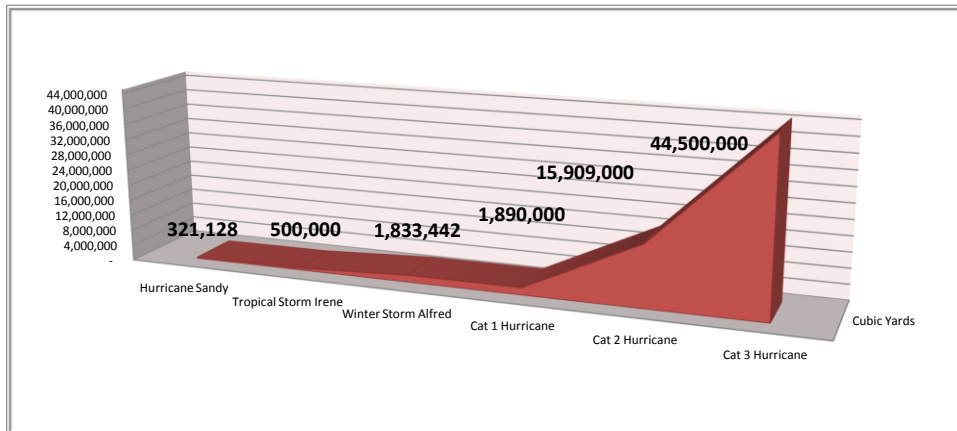


Connecticut Department of Energy and Environmental Protection



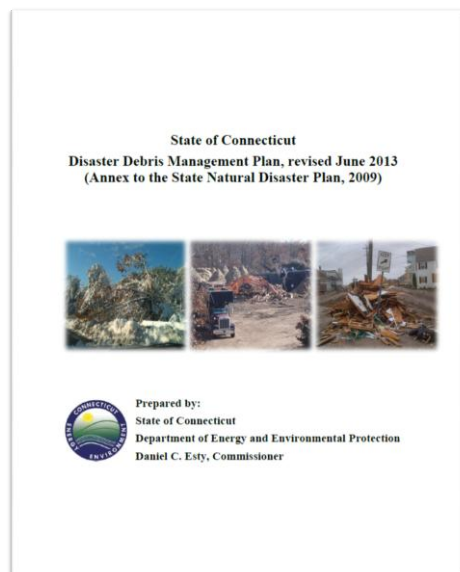
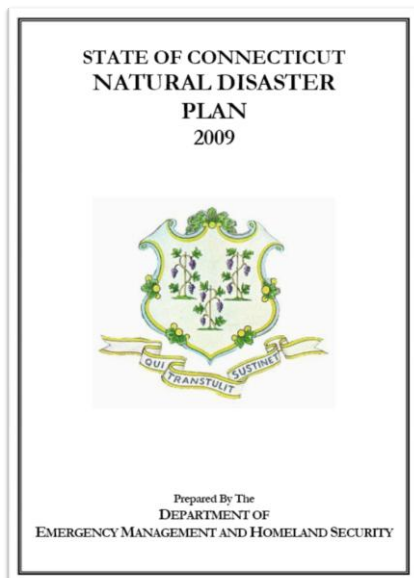
## Recent Storm Experience

- Super Storm Sandy (321,128 cubic yards)
- Tropical Storm Irene (500,000 cubic yards)
- Winter Storm Alfred (1,833,442 cubic yards)



*Strengthening Interagency Planning, Communication, and Coordination - IDMTF*

## ORGANIZATIONAL STRUCTURE TO CONDUCT DEBRIS MANAGEMENT



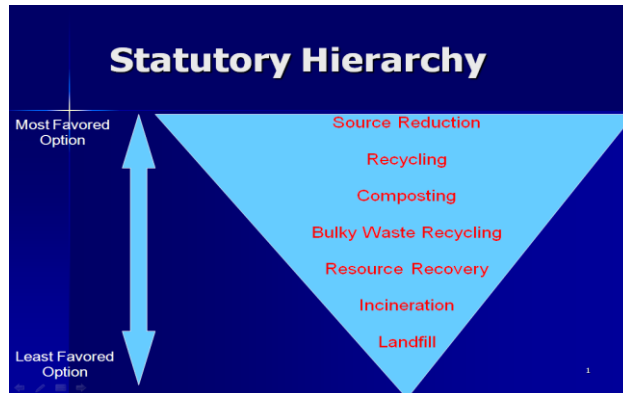
*Strengthening Interagency Planning, Communication, and Coordination - IDMTF*

# Disaster Debris Management Plan

## Purpose of the Plan:

### ➤ Aligns with:

- State's Solid Waste Management Hierarchy
- FEMA 325 Debris Management Guide

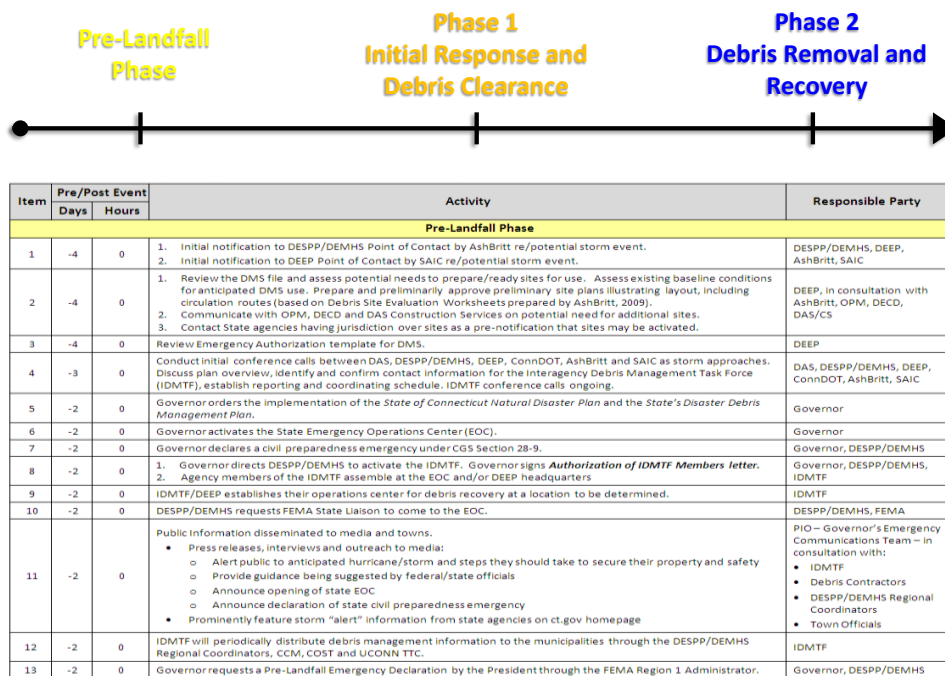


*Strengthening Interagency Planning, Communication, and Coordination - IDMTF*

State of Connecticut  
 Concept of Operations Plan – Disaster Debris Management  
 Activation and Use of the State Debris Removal and Monitoring Contracts  
 June 2013

<b>Primary Agencies for Interagency Debris Management Task Force (IDMTF):</b> Administrative Services, Department of (DAS) Emergency Services and Public Protection, Department of / Division of Emergency Management and Homeland Security (DESPP/DEMHS) Energy and Environmental Protection, Department of (DEEP) Transportation, Department of (ConnDOT)	
<b>Supporting State Agencies:</b> Administrative Services, Department of /Bureau of Properties & Facilities Management (DAS/BP&FM) Connecticut National Guard (CTNG) Consumer Protection, Department of (DCP) Emergency Services and Public Protection, Department of /CT State Police (DESPP/CSP) Energy and Environmental Protection, Department of /Public Utility Regulatory Authority (DEEP/PURA) Governor's Office Labor, Department of / Occupational Safety and Health Administration (ConnOSHA) Motor Vehicles, Department of (DMV) Office of Planning and Management (OPM) Public Health, Department of (DPH)	<b>Public Utilities</b> Northeast Utilities / Connecticut Light and Power (NU/CL&P) United Illuminating Company (UI)
<b>State Contractors:</b> AshBritt, Inc. (AshBritt) (Primary contractor for debris management services/removal) Science Applications International Corporation (SAIC) (SAIC is the sole contractor for the monitoring of debris management/removal operations)	<b>Other Supporting Organizations:</b> Conference of Connecticut Municipalities (CCM) Connecticut Economic Resource Center, Inc. (CERC) Council of Small Towns (COST) Other Public Utilities (e.g., telecommunications, water and waste water) University of Connecticut Technology Transfer Center (UConn TTC)
	<b>Supporting Federal Agencies:</b> U. S. Department of Homeland Security/ Federal Emergency Management Agency (FEMA) U. S. Department of Agriculture /National Resources Conservation Center (NRCS) U. S. Coast Guard (USCG) U. S. Department of Labor/ Occupational Safety and Health Administration (U.S. OSHA) U. S. Environmental Protection Agency (EPA) U. S. Army Corps of Engineers (USACE)

*Strengthening Interagency Planning, Communication, and Coordination - IDMTF*



*Strengthening Interagency Planning, Communication, and Coordination - IDMTF*

## State Pre-Positioned Contracts: Disaster Debris Management and Monitoring & Documentation

### General Comments

- Two contracts: 1) *debris removal* and 2) *monitoring*.
- Awarding of new contracts this year.
- Activation of Contracts – through a Declaration of Civil Preparedness Emergency.
- State agencies – may use contracts as they are.
- Municipalities – may use contracts at their own cost; need to enter a mutual agreement with the state contractors.

*Strengthening Interagency Planning, Communication, and Coordination - IDMTF*

## Interagency Debris Management Task Force

### Role:

**Coordinates the collection and management** of storm-generated debris for state agencies and municipalities requesting assistance via Emergency Operations Center.



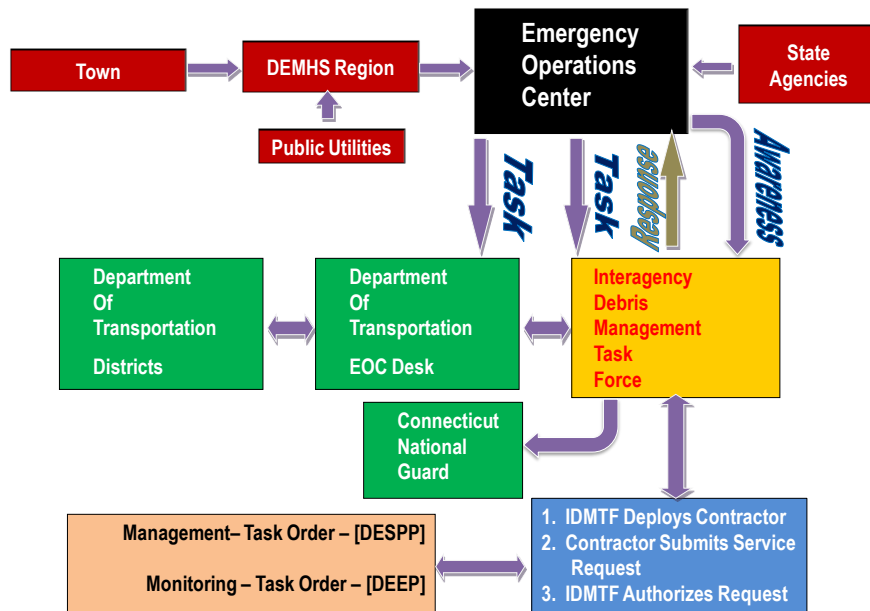
### Primary Agencies that Make-Up the IDMTF

Administrative Services,  
Department of

Emergency Services and Public  
Protection/ Division of Emergency  
Management and Homeland  
Security, Department of

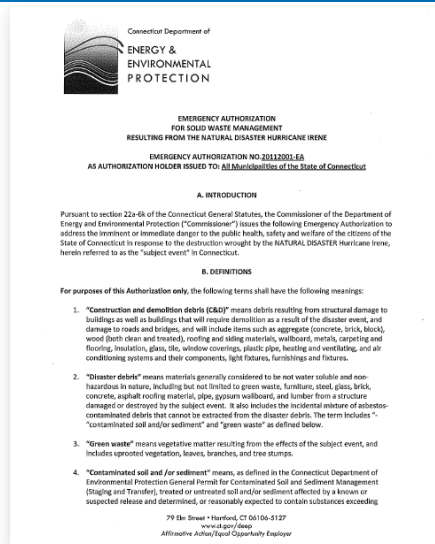
Energy and Environmental  
Protection, Department of

Transportation, Department of



*Strengthening Interagency Planning, Communication, and Coordination - IDMTF*

# Emergency Authorization



*Strengthening Interagency Planning, Communication, and Coordination - IDMTF*

## Disaster Debris Info on DEEP Web Site

State of Connecticut  
Governor Dannel P. Malloy | Search

Department of  
**ENERGY & ENVIRONMENTAL PROTECTION**

Select Language Translation Disclaimer Home About Us Programs & Services Publications Forms Contact Us

**ENERGY ENVIRONMENTAL QUALITY NATURAL RESOURCES OUTDOOR RECREATION PURA**

**State of Connecticut  
Disaster Debris Management Preparedness**

**Storm Sandy - October/November 2012**

**Information for Municipalities**

**Emergency Authorizations**

- [Emergency Authorization Fact Sheet for Managing Storm Generated Debris](#)
- [Temporary Authorization](#) to cover the use of equipment to replace sand that was displaced from beaches as a result of the storm.
- [Municipal Emergency Authorization - Storm Sandy](#)

**Debris Management Sites**

- [Site Selection Guide for Temporary Debris Storage and Reduction Sites \(TDGRS\)](#)
- [Fact Sheet - Appointment of Local Open Burning Official and Guidance on Brush Management Options](#)
- [Downed Trees](#)

**Use of State Contractors for Debris Collection and Monitoring**

- [Information Pertaining to Debris Management Contracts](#)
- [Municipal Guidance on Use of State Disaster Debris Removal and Monitoring Contracts](#)
- [Best Management Practices - Force Account Labor & Equipment for Debris Management](#)
- [FEMA Guidance on Debris Management Contracting](#)
- [FEMA Debris Management Brochure](#)
- [FEMA FAQ Debris Management Contracting](#)

Regulating Waste  
Compliance Assistance  
Hazardous Waste  
Remediation Waste  
Solid Waste  
Used Oil  
Wastewater  
Waste Transporters & Facilities  
Information for Municipalities  
Waste Disposal Information for Individuals/Households  
Regulating Waste Main Page  
Main Menu

Report an ENVIRONMENTAL Concern/Problem  
Calendar of Events  
Laws and Regulations  
Maps and GIS Data  
DOWNLOAD OUR FREE STATE PAKS & APPS  
CT STATE PAKS & APPS  
GPS MOBILE APP  
The CT DEEP logo



# Disaster Debris Info on DEEP Web Site

- [Municipal Emergency Authorization - Re-Issuance - Storm Alfred](#)
- [Emergency Authorization for Wood Chip Management - Storm Alfred](#)
- [Municipal Emergency Authorization - Storm Alfred \(October Snowstorm\)](#)
- [Municipal Emergency Authorization - Hurricane Irene](#)

## Debris Management Sites

- [Site Selection Guide for Temporary Debris Storage and Reduction Sites \(TDSRS\)](#)
- [Fact Sheet - Appointment of Local Open Burning Official and Guidance on Brush Management Options](#)
- [Downed Trees](#)
- [Final Destination Sites for Wood Chips Generated During Storm Alfred](#)

## Use of State Contractors for Debris Collection and Monitoring

- [Information Pertaining to Debris Management Contracts](#)
- [Municipal Guidance on Use of State Disaster Debris Removal and Monitoring Contracts](#)
- [CT Municipal Mutual Agreement - AshBritt \(debris removal\)](#)
- [CT Municipal Mutual Agreement - SAIC/BDR \(monitoring\)](#)
- [Best Management Practices - Force Account Labor & Equipment for Debris Management](#)
- [FEMA Guidance on Debris Management Contracting](#)
- [FEMA Debris Management Brochure](#)

## Information for Municipalities and Residents

- [Tree Debris Pickup Planned along State-Maintained Roads](#)
- [Solid Waste Management - Household Garbage; Storm Debris](#)
- [Picking up the Pieces - Putting Your Debris at the Curb for Pickup](#)
- [Important Health Information - Hurricane Irene \(CT DPH\)](#)
- [Public Information Concerning Disaster Debris Pickup](#)

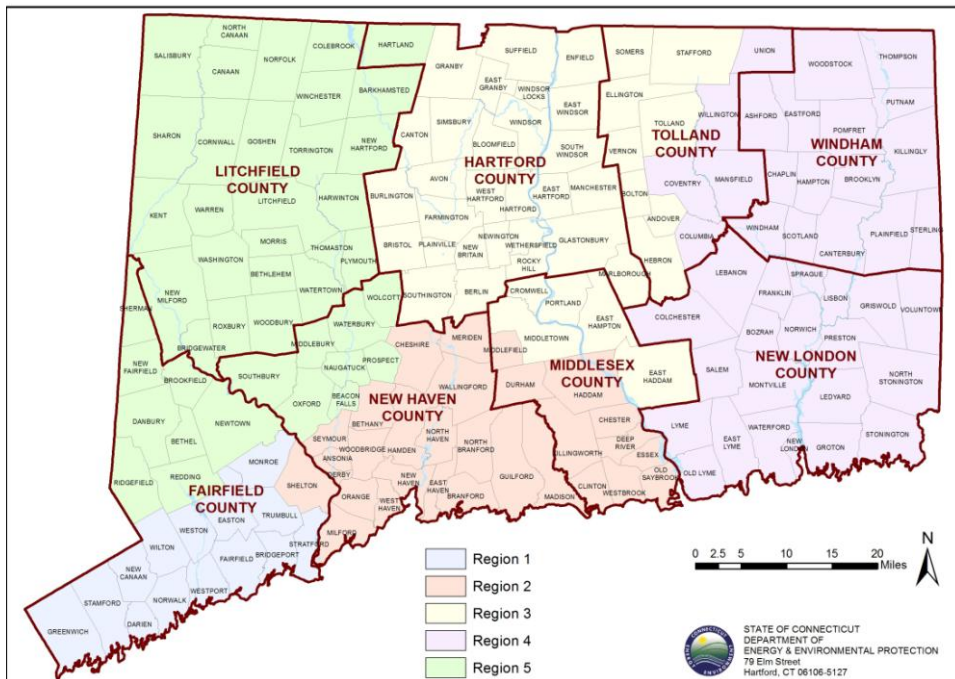
[Plans, Guidance Documents  
and Contracts](#)

[Resources](#)

[DEEP Contacts](#)

[Final Destination Sites for Wood Chips Generated During Storm Alfred. NEW!](#)

## State of Connecticut - Towns by DEMHS Regions



## Lessons Learned

### **General Comments:**

- Debris Management Structure
- Multi-Agency Debris Management Task Force
- Coordinating with public utilities for road clearance activities (Make-Safe)
- Management Contractor to Coordinate with DOT Oversize/Overweight Permit Program.
- Migration to an ADMS
- Flexibility with Debris Management Sites
- Coastal Debris Management
- Interaction with the Contractors/ Table Top Exercises.

*Strengthening Interagency Planning, Communication, and Coordination - IDMTF*

## Questions?

### CT DEEP - IDMTF

Frank Gagliardo and Joseph Schiavone

[DEEP.Debris@ct.gov](mailto:DEEP.Debris@ct.gov)

860-424-3023

<http://www.ct.gov/deep/>

*Strengthening Interagency Planning, Communication, and Coordination - IDMTF*