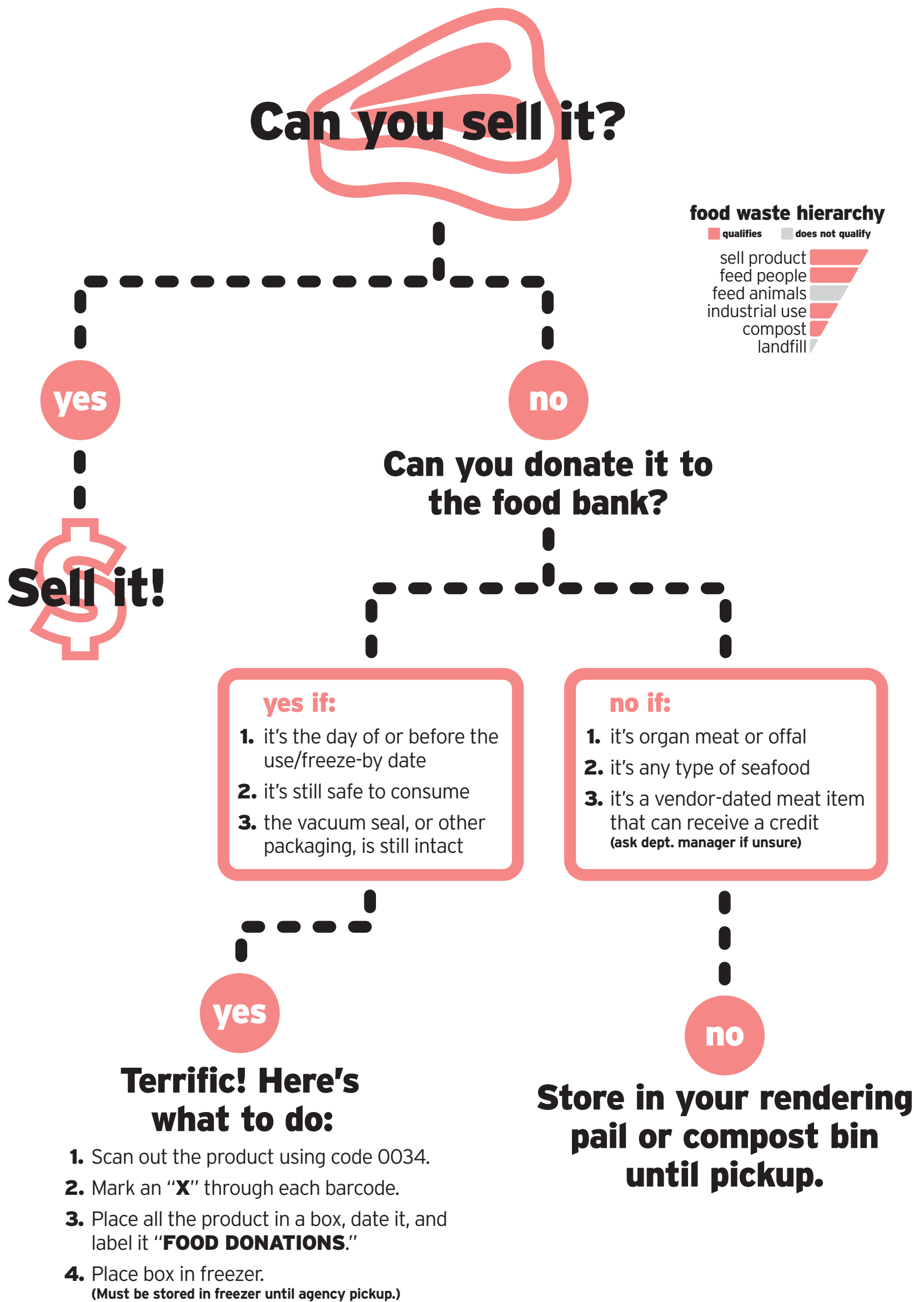
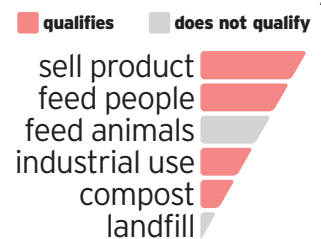


# meat donation handling procedure

Please remember to manage inventory responsibly to reduce excess shrink.



## food waste hierarchy



For detailed procedures on how to safely handle food donations, please refer to Food Bank Donation SPTA and/or Hannaford Supermarkets Fresh Rescue Donation Agreement. For any questions regarding donation pickup, please contact your division's Community Relations Specialist.

# deli donation handling procedure

Please remember to manage inventory responsibly to reduce excess shrink.



For detailed procedures on how to safely handle food donations, please refer to Food Bank Donation SPTA and/or Hannaford Supermarkets Fresh Rescue Donation Agreement. For any questions regarding donation pickup, please contact your division's Community Relations Specialist.

# bakery donation handling procedure

Please remember to manage inventory responsibly to reduce excess shrink.

Can you sell it?

yes



no

Can you donate it to the food bank?

yes if:

1. it's the day of or before the use/freeze-by date
2. it appears safe to consume (Use your judgment. Would you eat it?)

no if:

1. the package is broken or damaged
2. it's scraps from food prep
3. it's a bulk product that contains nuts

yes

**Terrific! Here's what to do:**

1. Scan out the product using code 0034.
2. Mark an "X" through each barcode.
3. Place all the product in a box, date it and label it "**FOOD DONATIONS.**"
4. Place box in appropriate location, cooler, or freezer.

**NOTE** If you do not have a food pantry pickup **THAT DAY**, you may freeze your donations until pickup (if you have the room to do so).

food waste hierarchy

■ qualifies ■ does not qualify

sell product  
feed people  
feed animals  
industrial use  
compost  
landfill

no

Can it be given to a farmer?

yes

**Store in your farmer's pail until pickup.**

no

**Store in your rendering pail or compost bin until pickup.**

**TIP** Keep a small rendering pail underneath your work station so you don't have to travel far to sort.



For detailed procedures on how to safely handle food donations, please refer to Food Bank Donation SPTA and/or Hannaford Supermarkets Fresh Rescue Donation Agreement. For any questions regarding donation pickup, please contact your division's Community Relations Specialist.

# produce donation handling procedure

Please remember to manage inventory responsibly to reduce excess shrink.

Can you sell it?



**food waste hierarchy**

- qualifies
- does not qualify
- sell product
- feed people
- feed animals
- industrial use
- compost
- landfill

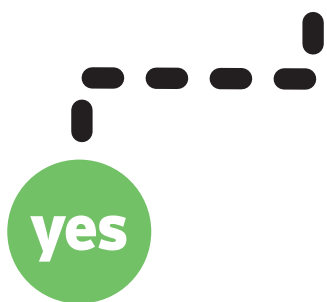
Can you donate it to the food bank?

**yes if:**

- it's a packaged item the day of or before the use/freeze-by date, but no longer meets our fresh standards
- it's a bulk item still fit for human consumption, but no longer meets our fresh standards

**no if:**

- it's an in-store-produced item (cut-fruit and melon program)
- it's scraps from produce cull (lettuce, greens and onion peels)

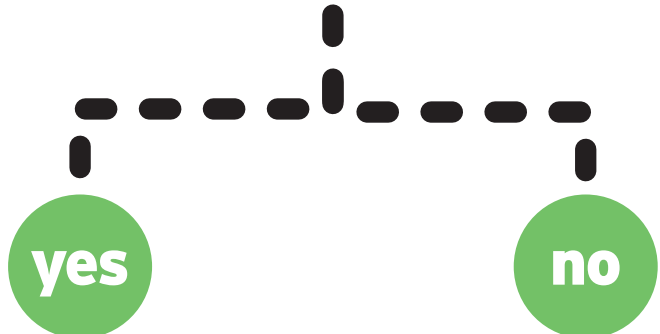


**Terrific! Here's what to do:**

- Scan out the product using code 0034.
- Mark an "X" through each barcode.
- Place all the product in a box, date it and label it "**FOOD DONATIONS.**"
- Place box in cooler.



Can it be given to a farmer?



**Store in your farmer's pail until pickup.**

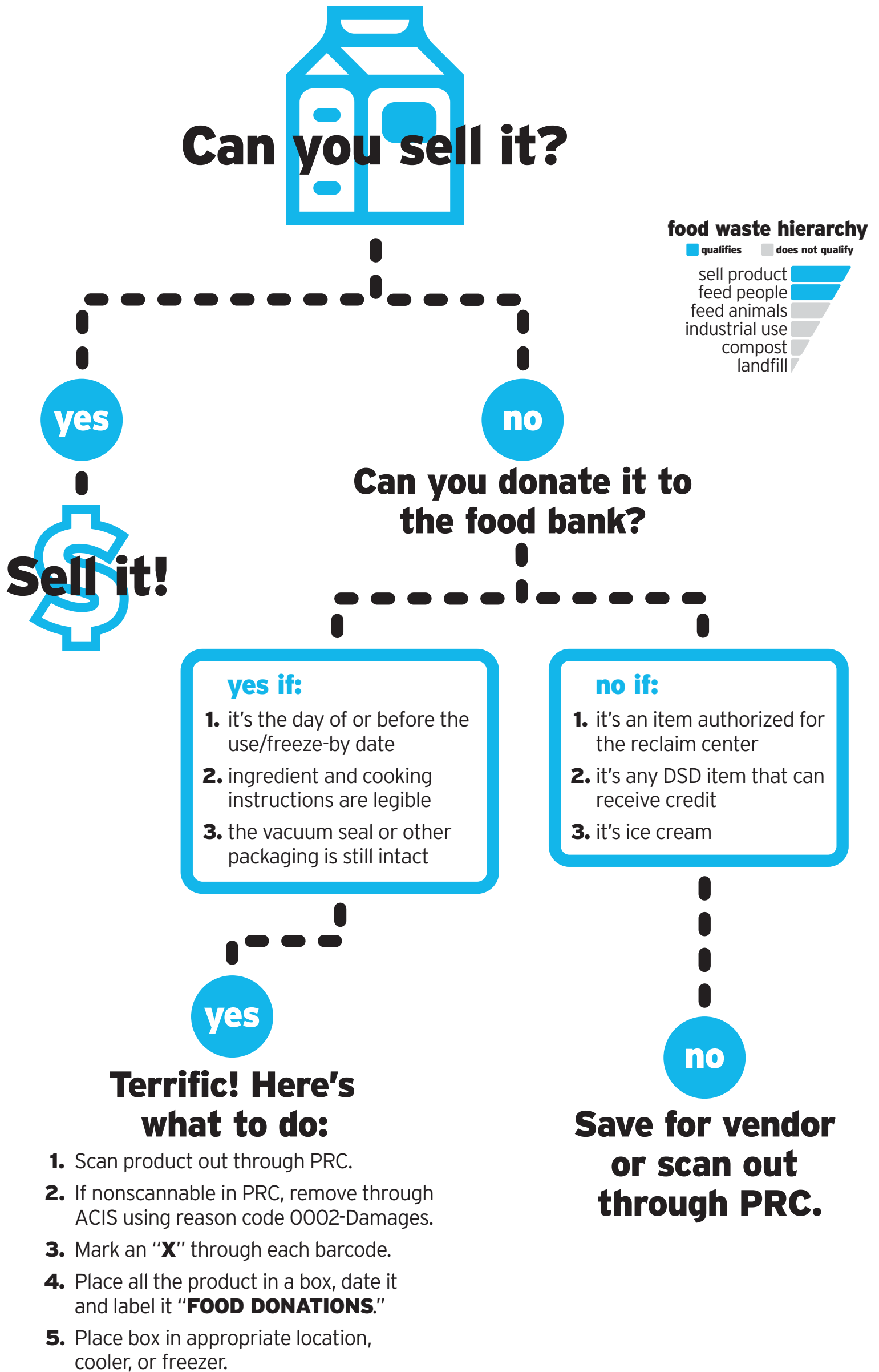
**Store in your rendering pail or compost bin until pickup.**



For detailed procedures on how to safely handle food donations, please refer to Food Bank Donation SPTA and/or Hannaford Supermarkets Fresh Rescue Donation Agreement. For any questions regarding donation pickup, please contact your division's Community Relations Specialist.

# frozen food & dairy donation handling procedure

Please remember to manage inventory responsibly to reduce excess shrink.



For detailed procedures on how to safely handle food donations, please refer to Food Bank Donation SPTA and/or Hannaford Supermarkets Fresh Rescue Donation Agreement. For any questions regarding donation pickup, please contact your division's Community Relations Specialist.