



NEWMOA Paint Management Workshop

July 22-23, 2013



Recycle with PaintCare

Maine Paint Stewardship Law

- **Paint Bill, passed July 2, 2013**
- *Implement an industry financed and operated paint management system*
- *Decrease cost and responsibility for local and state governments*
- *Reduce. Reuse. Recycle.*
 - *Decrease generation of postconsumer paint*
 - *Promote donation/using up*
 - *Increase recycling through improved convenience and outreach*

About PaintCare Inc.

- *Non-profit 501(c)(3) organization*
- *Established in 2009*
- *Created by the American Coatings Association as the industry's product stewardship organization (PSO)*
- *Governed by Board of architectural paint manufacturers*
- *Represent all paint manufacturers*
- *Operational organization – designs and implements all aspects of paint stewardship programs*



AmericanCoatings
ASSOCIATION

Why Paint

- *50% of household hazardous waste is paint*
- *Studies show that approximately 10% of paint is leftover/unused*
- *70 million gallons leftover annually in the US*
- *Local and state government resources are limited, resulting in minimal opportunity to recycle paint (in most states)*



Push for Industry Stewardship

2003 – Product Stewardship Institute (PSI) initiates national stakeholder dialogue aimed at finding a solution to postconsumer paint management

Participants include: ACA; paint manufacturers; Federal EPA, state and local governments; recycler; hazardous waste service providers

2007 – Dialogue leads to drafting of state level, industry-supported legislation – “model bill”

2009 – Oregon passes first paint stewardship law!



Current Programs – 7 States

Start Dates

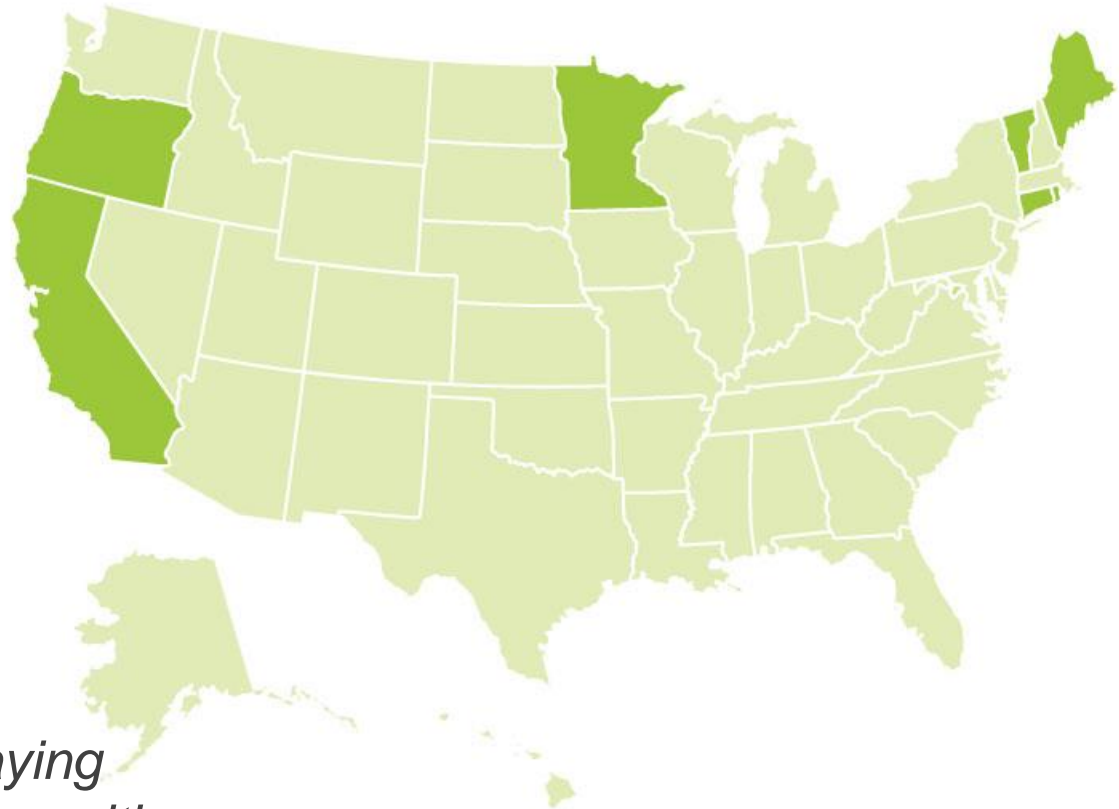
2010: Oregon

2012: California

2013: Connecticut

**2014: Rhode Island
Vermont
Minnesota**

2015: Maine



Need legislation for level-playing field and sustainable financing with anti-trust exemption.

Maine Implementation

Steps to Implementation

- 1. Identify and register paint manufacturers*
- 2. Identify existing paint/HHW collection programs – establish partnership*
- 3. Develop baseline convenience criteria (GIS modeling) using ME distance and population density criteria: 90% of residents should have access to a site within 15 miles + one additional sites for areas of 30K residents or more*
- 4. Identify and recruit retail and other new paint drop-off sites – establish partnership*

Steps to Implementation

- 5. Identify contractors – begin outreach regarding fees as early as possible*
- 6. RFP for PR/outreach – develop communications plan*
- 7. RFP for paint transportation/processing services*
- 8. Develop budget based on anticipated collection volume (3.2 million gallons sold, 10% leftover = 320,000 gallons leftover) and other expenses*
- 9. Establish “PaintCare Recovery Fee” structure*
- 10. Submit Program Plan*

Program Plan

- *Detailed Program Plan and budget prepared by PaintCare and submitted to the Maine Department of Environmental Protection*
- *Submit plan by April 15, 2015*
- *Implementation by July 15, 2015, or 3 months after Program Plan approval by the Commissioner*
- *Early start: Aiming to start program in 2014, but will need approval from PaintCare Board of Directors*

Who Can Use the Program

Latex Program Products

- From residents*
- From all businesses*

Oil-based Program Products

- From residents*
- From CEG businesses*



Recycle with PaintCare

Retail Responsibility

1. *Fee pass-through*
2. *Sell only registered brands*
3. *Be a paint drop-off site (voluntary)*



Recycle with PaintCare

Retail Drop-Off Site

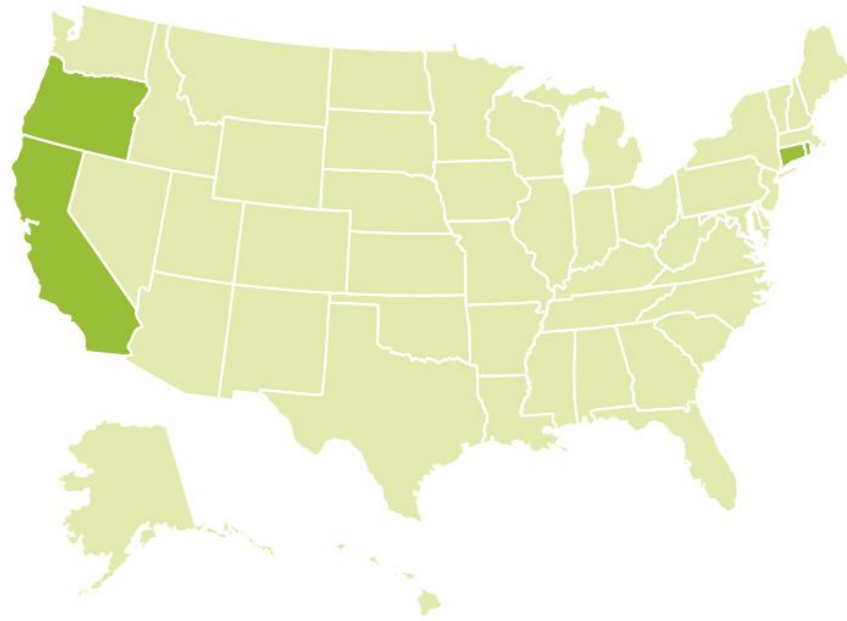
PaintCare Provides

- *On-site training*
- *Collection containers*
- *Transportation*
- *Recycling/proper disposal*
- *Store poster and consumer education materials*
- *Site promotion*



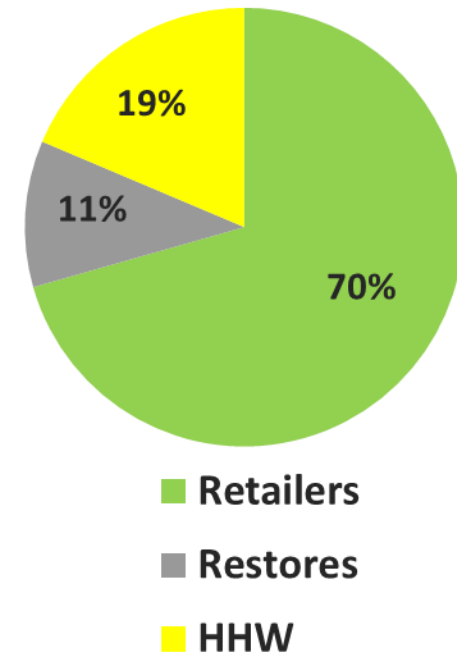
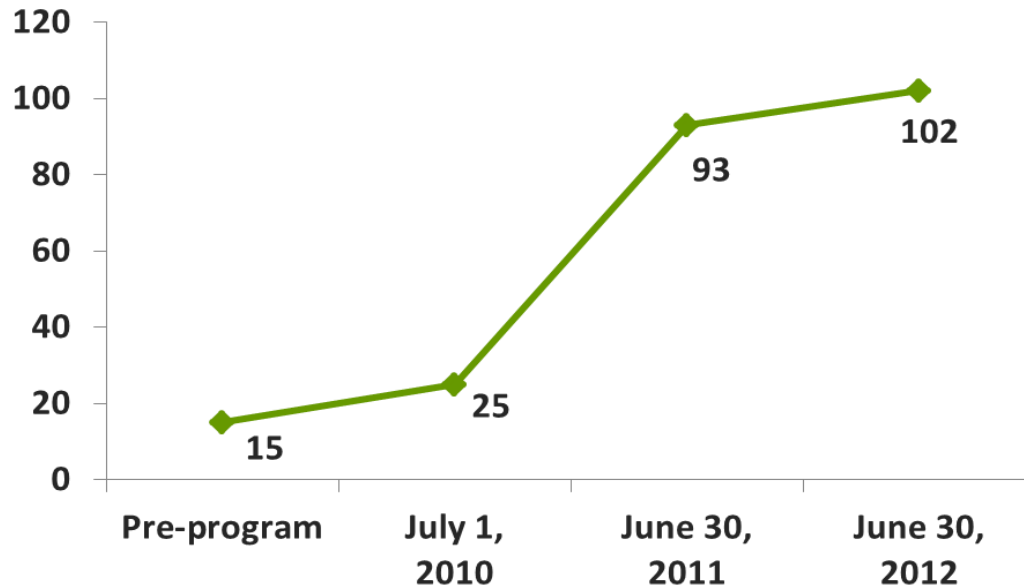
Recycle with PaintCare

Oregon, California, Connecticut Implementation



Recycle with PaintCare

Collection Sites and Volume – OR



Year 1: 469,665 gallons

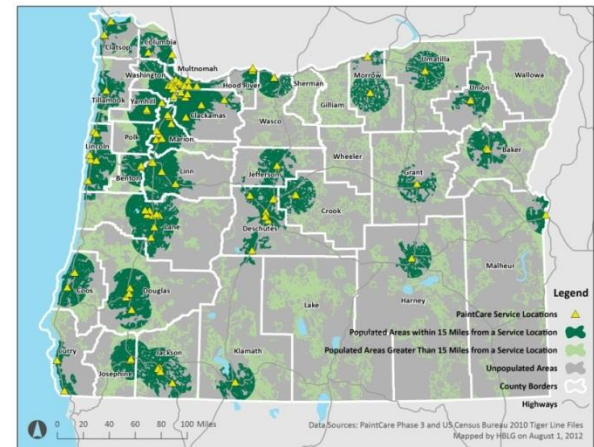
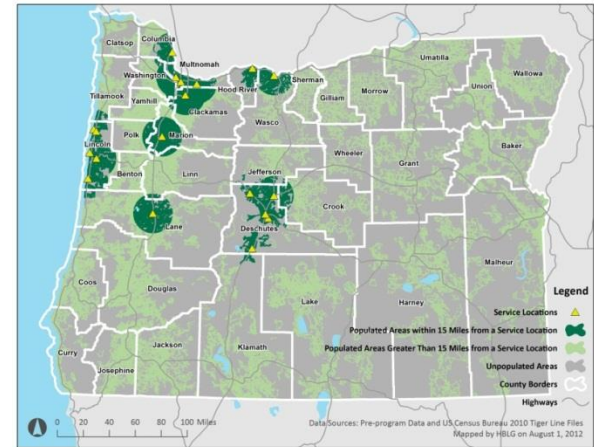
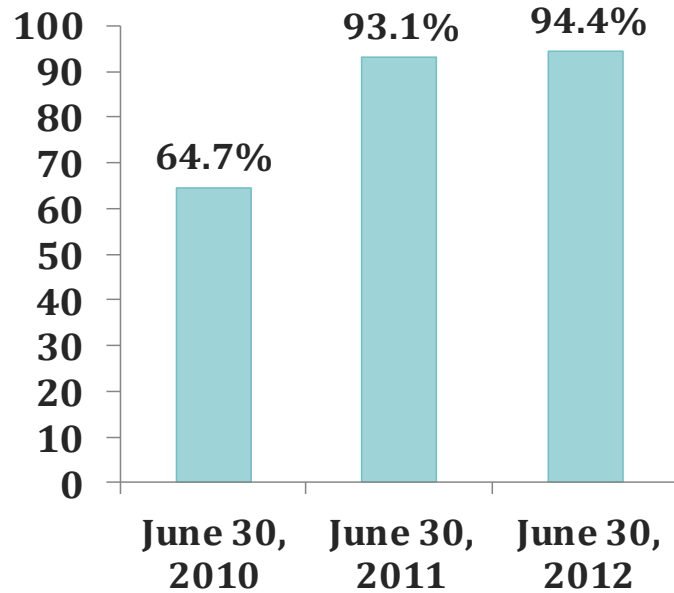
Year 2: 609,471 gallons

⇒ 30% Increase

Recycle with PaintCare

Convenience – OR

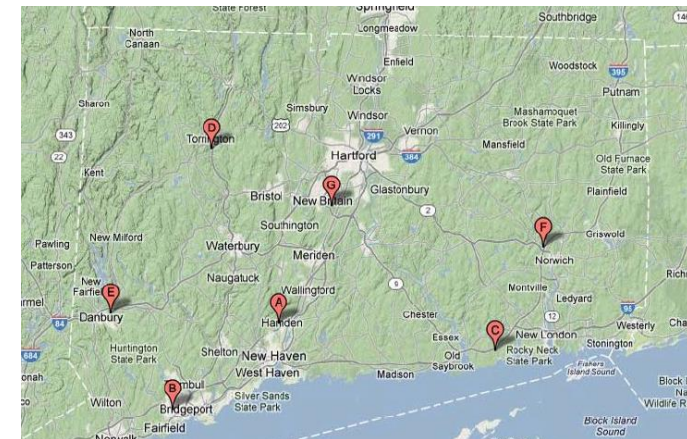
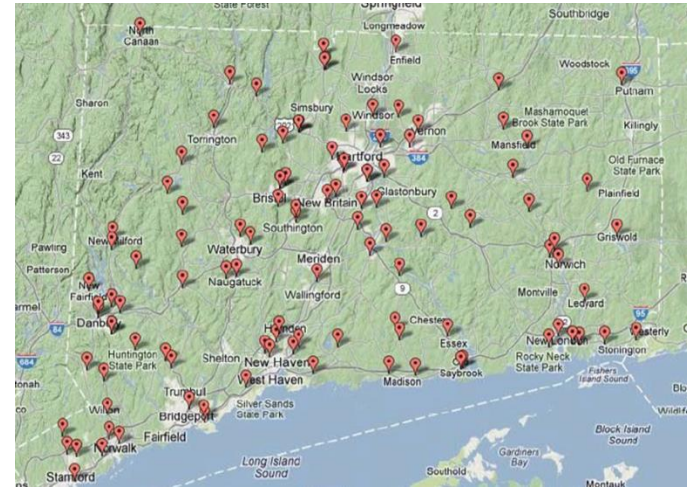
Oregon population within 15 miles of a collection site



Recycle with PaintCare

Collection Sites and Events – CT

- *Convenience criteria resulted in ~ 93 sites*
- *Recruited 80+ retail and 20+ transfer stations*
- *7 one-day paint collection events in July and August*



Large Volume Pick-Up – CA

Minimum of 300 gallons

- *More than 120 pick-ups since launching program in January*

Top Ten Sites

- 3,120 gallons
- 3,075 gallons
- 2,396 gallons
- 1,949 gallons
- 1,832 gallons
- 1,800 gallons
- 1,719 gallons
- 1,652 gallons
- 1,551 gallons
- 1,540 gallons



Recycle with PaintCare

Fee Structure and Costs

Fee Structure: Oregon, California, Connecticut

<i>Half pint and less</i>	<i>\$ 0.00</i>
<i>More than half pint to less than 1 gallon</i>	<i>\$ 0.35</i>
<i>1 gallon</i>	<i>\$ 0.75</i>
<i>More than 1 gallon to 5 gallon</i>	<i>\$ 1.60</i>

Program Cost

Oregon: \$3.8 M (pop: 3.8 M)

California: \$25-30 M (pop: 38 M)

Connecticut: \$3.1 M (pop: 3.6 M)

Maine ~ \$1.3 M (estimate based on \$1/person)

Retail Outreach



Connecticut Paint Stewardship Program Information for Paint Retailers

A new Connecticut law affecting paint retailers takes effect July 2013.

The new law requires paint retailers to add a stewardship assessment fee to architectural paint products and make sure they are not selling unregistered brands of architectural paint. Retailers may also volunteer to be paint collection sites for residents and certain businesses in their community.

New Paint Stewardship Program in Connecticut
The American Coatings Association (ACA) worked for ten years with various stakeholders interested in the management of post-consumer paint to develop and implement an industry-led Paint Stewardship Program in the United States.

PaintCare Inc., a non-profit 501(c)(3) organization, was established by the ACA to implement state-mandated paint stewardship programs on behalf of paint manufacturers in each state that adopts a paint stewardship law.

Oregon passed the first industry-supported paint stewardship law in 2009. California, Connecticut, and Rhode Island have since passed similar laws. More than 80 retail stores serve as drop-off sites in the Oregon program, and in its first two years, the program collected more than 1 million gallons of post-consumer paint. The California program began October 2012 with more than 350 paint retailers participating as drop-off sites.



MORE INFORMATION:
(855) 724-6909 or (855) PAINT20
www.paintcare.org or info@paintcare.org



Connecticut Paint Stewardship Program

How to Become a Retail Drop-off Site

A new Connecticut law affecting paint retailers takes effect July 2013.

The new law requires paint retailers to add a stewardship assessment fee to architectural paint products and make sure they are not selling unregistered brands of architectural paint. Retailers may also volunteer to be paint drop-off sites.

This factsheet explains how to partner with PaintCare as a retail drop-off site.

New Paint Stewardship Program in Connecticut
PaintCare Inc., a non-profit 501(c)(3) organization, was established by the American Coatings Association to implement state-mandated paint stewardship programs on behalf of paint manufacturers in each state that adopts a paint stewardship law.

Oregon passed the first industry-supported paint stewardship law in 2009. California, Connecticut, and Rhode Island have since passed similar laws. More than 80 retail stores serve as drop-off sites in the Oregon program, and in its first two years, the program collected more than 1 million gallons of post-consumer paint. The California program began October 2012 with more than 350 paint retailers participating as drop-off sites.

Making Paint Recycling More Convenient

The Connecticut program will allow residents and businesses to return unused architectural paint to drop-off locations throughout the State. Although household hazardous waste programs in Connecticut may continue to accept paint from residents and some businesses, these programs are not open year-round, generally do not accept latex paint, and may not be as conveniently located as retail stores. With the addition of retail drop-off sites, paint recycling will become much more convenient.

MORE INFORMATION:
(855) 724-6909 or (855) PAINT20
www.paintcare.org or info@paintcare.org

PaintCare® Fact Sheet
For Paint Retailers
January 2013



Benefits to Retailers

There are many benefits to becoming a drop-off site. Participating retailers will:

- Make recycling of leftover paint more convenient for your customers
- Support the paint industry's effort to lead the way in being responsible for end of life management of its own products
- Promote your store as environmentally responsible or "green"
- Increase customer foot traffic and sales
- Help relieve local government of their cost of managing leftover paint
- Do your part to help prevent the improper disposal of paint products

PAINTCARE INC.
1500 RHODE ISLAND AVENUE N.W.
WASHINGTON, DC 20005



Retailer Interest Form

To Be a PaintCare Drop-off Site in Connecticut

1500 RHODE ISLAND AVENUE N.W. • WASHINGTON, DC 20005 • T 855.724.6909 • F 855.385.2020

Use this form to let us know that you are interested in becoming a drop-off site. For a copy of our two-page fact sheet "How to Become a Retail Drop-Off Site," please visit www.paintcare.org/connecticut.

Store Name: _____
Street Address: _____
City / State / Zip: _____
Mall Address, if different: _____

CONTACT PERSON: _____
Name: _____
Phone: _____
Email: _____

SECOND CONTACT
Name: _____
Phone: _____
Email: _____

TYPE OF STORE:
 INDEPENDENT FRANCHISE CHAIN CO-OP BIG BOX

NOTE: (Fill this out if your participation is managed by a parent company.)
Company Name: _____
Contact Person: _____
Phone: _____
Email: _____

How much floor space of a pallet (5'x3')
store 1, 2, 3 or more cubic yard bins?
How many: 1 2 3 MORE THAN 3
Where? INDOORS OUTDOORS

FOR MORE INFORMATION:
Email: lpenciera@paint.org
Fax: 855-385-2020
Mail: PaintCare, 1500 Rhode Island Avenue N.W., Washington DC 20005
For more information, please call Laure Penciera: 202-747-4494

Recycle with PaintCare

POS / Consumer Materials



Recycle with PaintCare

About the PaintCare Program

Funding

The program is funded by a PaintCare Recovery Fee added by manufacturers to the price of all architectural paint sold in California. The law also requires each distributor and retailer to include the fee in the price of architectural paint sold in California. Fees are by container size as follows:

Half pint or less	\$ 0.00
More than half pint to less than 1 gallon	\$ 0.35
1 gallon	\$ 0.75
More than 1 gallon to 5 gallons	\$ 1.60

The retail store can choose whether or not to display the fee separately on sales receipts. The fee is not a deposit – you do not receive it back when you drop-off paint for recycling.

The funding is used to recycle all of your unused paint, whether it is from last month or from 20 years ago, and you don't have to buy paint to use the drop-off sites.

Paint Recycling

Paint received at drop-off sites is taken to authorized paint processing facilities where it is properly recycled or disposed.




Who is PaintCare?

PaintCare® is a non-profit 501(c)(3) organization, established by the American Coatings Association to implement state-mandated paint stewardship programs on behalf of paint manufacturers in the state that adopts a paint stewardship law.

PaintCare is currently running or preparing to implement programs in Oregon, California, Connecticut, and Rhode Island.

Paint Drop-Off Sites

PaintCare will establish hundreds of drop-off sites across California at paint retail stores, family-run household hazardous waste facilities, and other locations. When these sites are part of PaintCare, they will accept program products at no additional charge from all residents and paint businesses. To find a site near you, visit paintcare.org or call (855) 724-6809.




PaintCare 共同助力

關於 PaintCare 計畫




PaintCare 이용한 재활용

PaintCare 프로그램에 관하여




Reciclaje con PaintCare

Acerca del programa de PaintCare

Recycle with PaintCare

Contractor Outreach



Connecticut Paint Stewardship Program

What Trade Painters Need To Know

A new Connecticut law affecting trade painters takes effect July 2013.

The new law requires paint manufacturers to add a stewardship assessment fee to architectural paint products, and pass the fee to distributors and retailers. Retailers must include the fee in their retail price, and may not sell brands from manufacturers not complying with the fee assessment.

Funds from the program will be used to collect, free of charge, leftover paint from residents and certain businesses. Paint drop-off sites will be set up at retail stores and other sites throughout the state.

New Paint Stewardship Program in Connecticut

The American Coatings Association (ACA) has worked for years with various stakeholders interested in the management of post-consumer paint to develop an industry-led paint stewardship program in the United States.

PaintCare Inc., a non-profit 501(c)(3) organization, was established by the ACA to implement state-mandated paint stewardship programs on behalf of paint manufacturers in each state that adopts a paint stewardship law.

Oregon passed the first industry-supported paint stewardship law in 2009. California, Connecticut, and Rhode Island have since passed similar laws. More than 80 retail stores serve as drop-off sites in the Oregon program, and in its first two years, the program collected more than 1 million gallons of post-consumer paint. The California program began in October 2012 with more than 350 paint retailers participating as drop-off sites.

Connecticut's program is expected to begin in July 2013. The exact start date is 60 days after the Connecticut Department of Energy and Environmental Protection approves a required

MORE INFORMATION:
(855) 724-6809 or (855) PAINT09
www.paintcare.org or info@paintcare.org

Stewardship Plan to be submitted of paint manufacturers. The plan Although the program is required designed and operated by the

Assessment Fee and Funding

As required by the law, the stewardship assessment fee must be added by manufacturer of all architectural paint sold. This fee will fund the collection and proper disposal of architectural paint for consumer education, retail and distributor from paint manufacturer and distributor. The purchase price of architectural paint will include the fee on the purchase price of architectural paint. Displaying the fee on the purchase price of architectural paint ensures fee transparency.

The fees in Connecticut will be used to collect, free of charge, leftover paint from residents and certain businesses. Paint drop-off sites will be set up at retail stores and other sites throughout the state.



Program zagospodarowania odpadów malarskich

O czym powinniście wiedzieć

W lipcu 2013 roku w życie wchodzi nowa prawnoregulacja dotycząca odpadów malarskich.

W świetle nowych przepisów producenci farb dla budownictwa oraz do użytku profesjonalistów (distributerzy i sprzedawcy detaliczni) muszą uwzględnić opłatę w swojej cenie sprzedaży malarskich produktów, nie mogą sprzedawać malarskich produktów bez opłaty.

Fundusze uzyskane dzięki programowi do bezpłatnej zbiórki niewykorzystanej farby w sklepach malarskich w całym stanie, w tym w sklepach wyznaczonych do zbioru odpadów malarskich.

Nowy program zagospodarowania odpadów malarskich

American Coatings Association (ACA) Stowarzyszenie Powłok Malarskich) współpracowało z różnymi interesariuszami w celu opracowania branżowego programu stewardship farby w Stanach Zjednoczonych.

Stowarzyszenie ACA (Amerykańskie Stowarzyszenie Powłok Malarskich) zostało utworzone przez producentów farb nakładających się na program zagospodarowania odpadów malarskich.

W roku 2009 w stanie Oregon uchwalono pierwszy ustawę o gospodarce odpadami malarskimi. W stanie Kalifornia, program został wprowadzony w życie w październiku 2012 roku. W stanie Kalifornia, program został wprowadzony w życie w październiku 2012 roku. W stanie Kalifornia, program został wprowadzony w życie w październiku 2012 roku.

W stanie Kalifornia, program został wprowadzony w życie w październiku 2012 roku. W stanie Kalifornia, program został wprowadzony w życie w październiku 2012 roku. W stanie Kalifornia, program został wprowadzony w życie w październiku 2012 roku.

Rozpoczęcie programu w stanie Connecticut jest przewidziane na lipiec 2013 r. Dokładna data uruchomienia programu zostanie ogłoszona.

Więcej informacji:
(855) 724-6809 lub (855) PAINT09
www.paintcare.org lub info@paintcare.org



¿Qué necesitan saber los pintores comerciales?

Una nueva ley de Connecticut, que afecta a los pintores comerciales, entra en vigor en julio de 2013.

La nueva ley requiere que los fabricantes de pintura agreguen una tarifa de administración a los productos de pintura arquitectónica y que dicho cargo sea pasado a los distribuidores y minoristas. Se establecerán lugares de entrega de pintura en minoristas y en otros sitios en todo el estado.

Los fondos del programa se utilizarán para recolectar y disponer gratuitamente la pintura sobrante de los residentes y ciertos negocios. Se establecerán lugares de entrega de pintura en minoristas y en otros sitios en todo el estado.

Nuevo programa de administración de pintura en Connecticut

La Asociación Americana de Revestimientos (ACA, por sus siglas en inglés) ha trabajado durante los últimos 10 años con varias partes interesadas en la administración de las pinturas de postconsumo para desarrollar e implementar un programa de postconsumo de pinturas liderado por la industria en los EE.UU.

PaintCare Inc., una organización sin fines de lucro 501(c)(3), fue establecida por la ACA para implementar programas de administración de pinturas por mandato de los estados, de parte de los fabricantes de pintura de cada estado que adopta una ley de administración de pintura.

Oregon aprobó la primera ley de administración de pintura apoyada por la industria en 2009. California, Connecticut y Rhode Island han aprobado leyes similares desde entonces. Más de 80 tiendas minoristas sirven como lugares de entrega en el programa de Oregon, y en sus primeros dos años el programa recolectó más de 1 millón de galones (3,8 millones de litros) de pintura de postconsumo. El programa de California comenzó en octubre de 2012 con más de 350 minoristas de pintura participando como lugares de entrega.

Se espera que el programa de Connecticut comience en julio de 2013. La fecha inicial exacta es 60 días después de que el Departamento de Energía y Protección Ambiental de Connecticut apruebe un Plan de Administración requerido que PaintCare presentará el 1 de marzo de 2013. Si bien el programa de Connecticut no comenzará hasta julio de 2013, se establecerán sitios de entrega de pintura en todo el estado.

MÁS INFORMACIÓN:
(855) 724-6809 o (855) PAINT09
www.paintcare.org o info@paintcare.org

Notice for Trade Painters

A new law affecting paint sales in California adds an eco fee to the price of architectural paint starting October 19, 2012.

The California Paint Stewardship Program, required by a 2010 state law, is operated by PaintCare, a non-profit established by the paint industry. Fees will fund the collection, transportation, and recycling of architectural paint, as well as consumer education and administration. Paint retailers are required to add the fees to the price of paint starting October 19 2012 based on container size: \$0.35 for more than half pint to less than 1 gallon containers; \$0.75 for 1 gallon containers; and \$1.60 for more than 1 gallon to 5 gallon containers.



PAINTCARE INC.
1500 RHODE ISLAND AVENUE N.W.
WASHINGTON, DC 20005

Benefit to Trade Painters

In the next two years PaintCare will set up hundreds of drop-off sites for unused paint throughout California to provide a convenient recycling option for trade painters, residents and other businesses. You will be able to drop off unused paint for no additional cost, because the cost to recycle the paint from the sites is funded by the new eco fees. This is not a deposit program, and it is not limited to recycling only new paint; you will even be able to recycle old paint from years ago. There are some restrictions: everyone may use the sites to get rid of all unwanted latex paint, but only residents and small businesses will be able to use the sites for their oil based paint.

Recycle with PaintCare

Bidding Jobs

It is expected that trade painters will pass the eco fees to their customers. When estimating jobs using paint purchased October 19, 2012 or later, painters should consider these fees and be sure the quotes they get from paint stores include the fees. In turn trade painters should add these fees in estimates and bids to their customers.



Recycle with PaintCare

Co-Branded Materials



Recycle with PaintCare

About the PaintCare Program





True Value

Find a paint drop-off site near you by visiting paintcare.org



Recycle with PaintCare

REUSE, RECYCLE AND PROPERLY DISPOSE OF OLD PAINT

REUSA, RECICLA Y DESECHA LA PINTURA VIEJA



Give your old paint new life with PaintCare, a new non-profit program established to manage the reuse, recycling and proper disposal of old paint. A PaintCare Recovery Fee has been applied to the purchase of each unit of paint (including all accepted products below) sold in the state of California, based on a graduated container rate. This fee will appear separately on sales receipts.

Para darle una nueva vida a su pintura vieja, utilice PaintCare, un nuevo programa sin fines de lucro establecido para gestionar el reuso, el reciclaje y el manejo adecuado de la pintura vieja. Una tarifa de recuperación de pintura se aplicó a la compra de cada unidad de pintura (incluyendo todos los productos aceptados para reciclaje) vendidos en el estado de California. Esta tarifa aparecerá por separado en sus recibos de ventas.

For this nominal fee, PaintCare will dramatically increase collection centers throughout California, establishing more convenient opportunities for recycling and proper disposal of your leftover paint.

Por esta tarifa nominal, PaintCare aumentará drásticamente los centros de recolección de pintura en California, ofreciendo más oportunidades convenientes para reciclar y desechar adecuadamente los restos de pintura.

Container Size Tamaño del contenedor	Fee Per Unit Cargo por unidad
1/2 Pint or Less 1/2 galón o menos	No Charge Sin cargo
More Than 1/2 Pint to 1 Gallon Más de 1/2 galón a 1 galón	\$0.35
Gallon 1 galón	\$0.75
More Than 1 Gallon to 5 Gallons Más de 1 galón a 5 galones	\$1.60

ACCEPTED PRODUCTS FOR RECYCLE

PRODUCTOS ACEPTADOS PARA RECICLAJE

(Maximum container size: 5 gallons)
(Máximo tamaño del contenedor: 5 galones)

- Interior and Exterior Architectural Paints: Latex, Acrylic, Water-Based, Alkyd, Oil-Based, Enamel (all types of finishes and sheens, including textured coatings)
Pinturas para interiores y exteriores: Latex, acrílico, a base de agua, alquídico y a base de aceite, esmalte (todos los tipos de acabados y brillos, incluyendo acabados con textura)
- Deck Coatings & Floor Paints (including elastomers)
Recubrimientos para pisos y pinturas para pisos (incluyendo elastómeros)
- Primers, Sealers, Undercoaters
Primeres, selladores, selladores de primeres, selladores y adhesivos
- Stains
Tintes y barnices
- Shelacs, Lacquers, Varnishes, Urethanes (single component)
Lacas, barnices, barnices, barnices (componente único)
- Waterproofing Concrete, Masonry/Wood (not tar or bitumen-based)
Impermeabilizante de concreto, mampostería y madera (no a base de alquídico)
- Swimming Pool Paints (single component)
Pinturas para piscinas (componente único)
- Metal Coatings, Rust Preventatives
Recubrimientos metálicos, recubrimientos para el control de la herrumbre y herrumbre
- Field and Lawn Paints
Recubrimientos para campos y jardines (componente único)

NOT ACCEPTABLE FOR RECYCLE

NO ACEPTABLES PARA RECICLAJE

(Regardless of container size)
(Sin importar el tamaño del contenedor)

- Paint Thinners, Mineral Spirits or Solvents
Disolventes, aceites, disolventes, thinneres y solventes
- Aerosol Paints (spray cans)
Pinturas en aerosol
- Auto and Marine Paints
Pinturas automotrices para autos
- Traffic and Road Marking Paints
Pinturas de tráfico
- Arts and Crafts Paints
Pinturas para artesanías
- Caulking Compounds, Epoxies, Glues or Adhesives
Compuestos de sellado, resinas epoxi, adhesivos, pegamentos y adhesivos
- Paint Additives, Colorants, Tints, Resins
Aditivos para pintura
- Wood Preservatives
Conservantes de maderas
- Roof Patch or Repair
Parches para techos
- Tar or Bitumen-based Products
Productos a base de alquídico o alquídico
- 2-Component Coatings
Recubrimientos de 2 componentes
- Industrial Maintenance (IM) Coatings, Labeled with One of the Following:
For industrial use only
For professional use only
Not for residential use
Not intended for residential use
Recubrimientos para mantenimiento industrial
- Original Equipment Manufacturer (OEM) Paints and Finishes (shop application)
Pinturas, barnices y acabados originales para superficies industriales y OEM (aplicación de tienda)
- Other Chemical Products (motor oil, pesticides, cleaning chemicals, etc.)
Productos químicos (aceite de motor, pesticidas, productos de limpieza, etc.)

To find a collection center near you please call 1.855.724.6809 or visit WWW.PAINTCARE.ORG

Para encontrar un centro de recolección de pintura cerca de usted llame al 1.855.724.6809 o visite WWW.PAINTCARE.ORG

The Home Depot stores are NOT functioning as paint collection centers for this program.
Los centros de Home Depot NO están funcionando como centros de recolección de pintura para este programa.



More saving. More doing. 

Recycle with PaintCare

Program Posters



Recycle your paint here.

To learn what products are accepted by the program either ask your sales associate, call (855)724-6809 or visit www.paintcare.org.



Recycle with PaintCare

Leaking, unlabeled, and empty containers are not accepted.



California Paint Stewardship Program

About the PaintCare Program

Effective October 19, 2012 the "PaintCare Recovery Fee" is included in the purchase price of architectural paint sold in California as required by the California Paint Stewardship Law. Fees are based on container size as follows:

Half pint or less	\$ 0.00
More than half pint to less than 1 gallon	\$ 0.35
1 gallon	\$ 0.75
More than 1 gallon to 5 gallons	\$ 1.60

PROGRAM PRODUCTS

These products have fees and will be accepted at PaintCare-partnering drop-off sites:

- Latex paints (acrylic, water-based)
- Oil-based paints (alkyd)
- Stains
- Primers, sealers, undercoaters
- Shellacs, lacquers, varnishes, urethanes (single component)
- Deck coatings, floor paints (including elastomeric)
- Waterproofing concrete/masonry/wood sealers and repellents (not tar or bitumen-based)
- Swimming pool paints (single component)
- Metal coatings, rust preventatives
- Field and lawn paints

PAINTCARE®

PaintCare® is a non-profit 501(c)(3) organization, established by the American Coatings Association to implement state-mandated paint stewardship programs on behalf of paint manufacturers in states that adopt a paint stewardship law.

For more information, please ask for the PaintCare brochure or visit www.paintcare.org.

NEW LAW

California law requires paint manufacturers to develop a financially and environmentally sustainable program to manage post-consumer architectural paint. The new program will make paint recycling more convenient by setting up hundreds of drop-off sites throughout the state where consumers can take their remaining paint.



Recycle with PaintCare

Recycle with PaintCare

Newspaper Ads



We're planning to recycle our leftover paint.

Do you know what to do with leftover paint? Recycling with PaintCare® is simple and convenient. Please join us in protecting the environment by recycling and properly disposing of your leftover paint.

How does it work?

When you buy a gallon of new paint, 75¢ of the purchase price funds the cost of recycling your old leftover paint. (35¢ for quarts; \$1.60 for 5-gallon cans.) PaintCare is setting up drop-off sites throughout California where you will be able to bring leftover paint for no additional charge.

To learn more please call (855) 724-6809 or visit paintcare.org.

Recycle with PaintCare



I'm planning to recycle my leftover paint.

Do you know what to do with leftover paint? Recycling with PaintCare® is simple and convenient. Please join us in protecting the environment by recycling and properly disposing of your leftover paint.

How does it work?

When you buy a gallon of new paint, 75¢ of the purchase price funds the cost of recycling your old leftover paint. (35¢ for quarts; \$1.60 for 5-gallon cans.) PaintCare is setting up drop-off sites throughout California where you will be able to bring leftover paint for no additional charge.

To learn more please call (855) 724-6809 or visit paintcare.org.

Recycle with PaintCare



Recycle with PaintCare

Radio



CA 15 sec.



CA 30 sec.



Spanish 30 sec.

Recycle with PaintCare

Billboard

Choosing a paint color isn't easy.



But recycling our leftover paint is.

www.paintcare.org
(855)PAINT09



Recycle with PaintCare

Online Banner Ads

Do you know what to do with your leftover paint?



A row of four paint cans. From left to right: a white can labeled 'latex PAINT', a yellow can labeled 'house paint', an orange can labeled 'PAINT' with 'PLUS LATEX FORMULA PAINT' below, and a red can labeled 'interior PAINT' with 'Interior Use' below.

Recycle it with PaintCare.



A row of four paint cans, identical to the first panel. From left to right: a white can labeled 'latex PAINT', a yellow can labeled 'house paint', an orange can labeled 'PAINT' with 'PLUS LATEX FORMULA PAINT' below, and a red can labeled 'interior PAINT' with 'Interior Use' below.



paintcare®

To learn more, visit paintcare.org or call (855) 724-6809.

The PaintCare logo features a circular arrow graphic with three colored dots (green, yellow, red) at the bottom right. The text 'paintcare' is in a lowercase, sans-serif font.

Recycle with PaintCare

Site Locator Tool


Paint Drop-Off Locations

California, Oregon and Connecticut: Use this tool to find PaintCare-sponsored drop off sites including retailers, transfer stations and household hazardous waste programs.

Other States: This tool also finds household hazardous waste programs and other places throughout the United States that accept left over paint from the public.

Address: City: State:

Zip: I Am: A Resident A Business



- 1 [Kelly-Moore Paints](#)
Distance: 1.52 Mi.
- 2 [Creative Paint](#)
Distance: 1.53 Mi.
- 3 [Dunn-Edwards Paints](#)
Distance: 4.41 Mi.
- 4 [Kelly-Moore Paints](#)
Distance: 4.75 Mi.
- 5 [Sherwin-Williams](#)

Recycle with PaintCare

Mobile App



App Store Icon



Recycle with PaintCare

Staffing

See job description for Vermont, New Hampshire, Maine Program Manager at:

paintcare.org/contact

Contact Information

Ida Arabshahi

Program Coordinator

(202) 719-3686

iarabshahi@paint.org



Marjaneh Zarrehparvar

Executive Director

(202) 719-3683

mzarrehparvar@paint.org

Recycle with PaintCare