

Perfluorinated Compounds Investigations at Federal Facilities in New England

May 23, 2016

Robert Lim, RPM

EPA Region 1 Federal Facilities Superfund Section

Lim.Robert@epa.gov

(617) 918-1392



Presentation Summary

- PFCs at Federal Facilities in Region 1
- PFC Investigations at Joint Base Cape Cod
- Findings at Joint Base Cape Cod
- Sampling and Analysis Challenges
- Questions



PFCs at Federal Facilities in Region 1

- Five Year Review Recommendations
 - Check for emerging contaminants
 - » PFCs and 1,4-Dioxane
- Status of Investigations at Federal Facilities

3



Status of FF Investigations

| DoD Branch | Federal Facility Name | Started (Y/N) | Notes |
|------------|--|---------------|---|
| Air Force | Hanscom AFB | NO | PA finished; sampling in Summer |
| Air Force | Former Loring AFB | YES | Investigation ongoing |
| Air Force | Pease AFB | YES | Investigation ongoing |
| Air Force | Joint Base Cape Cod | YES | Draft Flight Line SI under review; awaiting Supplemental RIs for Plumes |
| Army | Fort Devens | NO | PA completed |
| Army | Fort Devens Sudbury Training Annex | NO | PA planned |
| Army | Natick Laboratory | YES | PCOR (2014) no evidence of PFC use |
| Army | Watertown Arsenal | NO | FYR (2016) identified as an issue |
| Navy | Brunswick Naval Air Station | YES | Investigation ongoing |
| Navy | Davisville Naval Construction Battalion Center | NO | PA planned |
| Navy | Naval Weapons Industrial Reserve Plant | YES | PFOS detects |
| Navy | New London Sub Base | NO | PA planned |
| Navy | Newport | YES | Investigation ongoing |
| Navy | Portsmouth Naval Shipyard | NO | PA planned |
| Navy | Weymouth NAS | YES | Potential sites identified |

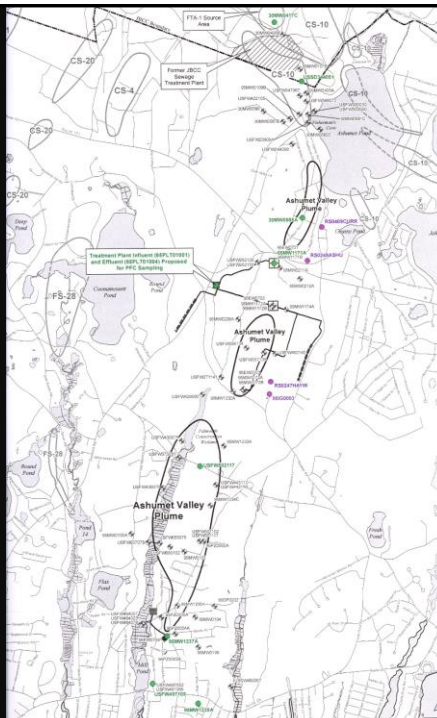
4



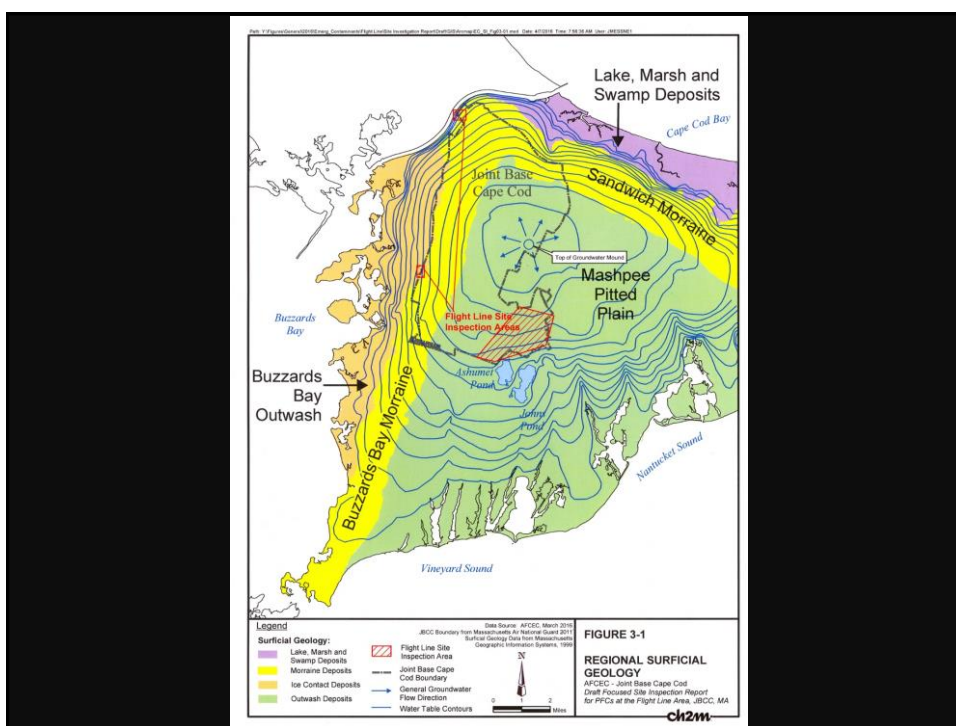
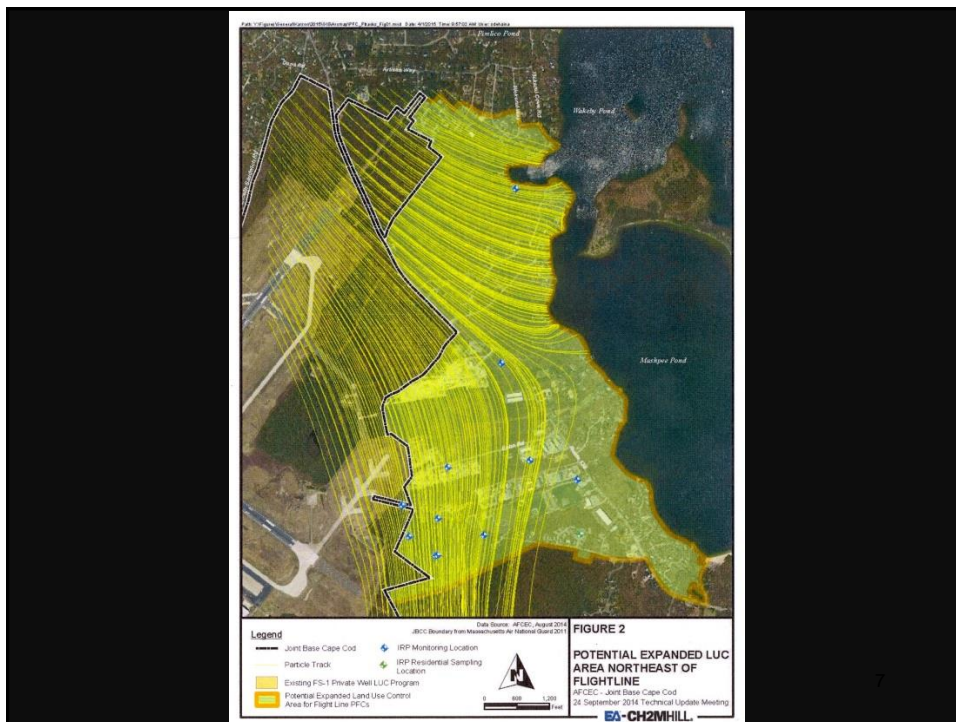
PFC Investigations at JBCC

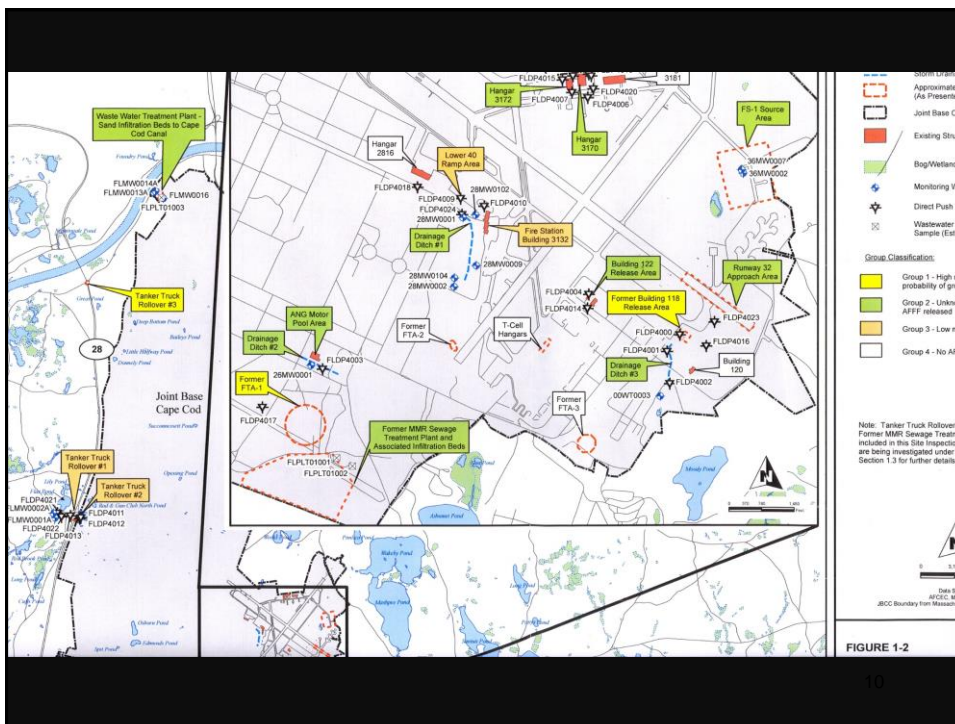
- Five Year Review Sampling in 2014
 - Fire Training Area-1 and Ashumet Valley (AV)
 - AV Treatment Plant & Infiltration Galleries
 - 1,4-Dioxane Issue
- Flight Line Investigation
 - Requested in July 2014 following Pease AFB detects
 - EPA private well sampling in July 2014

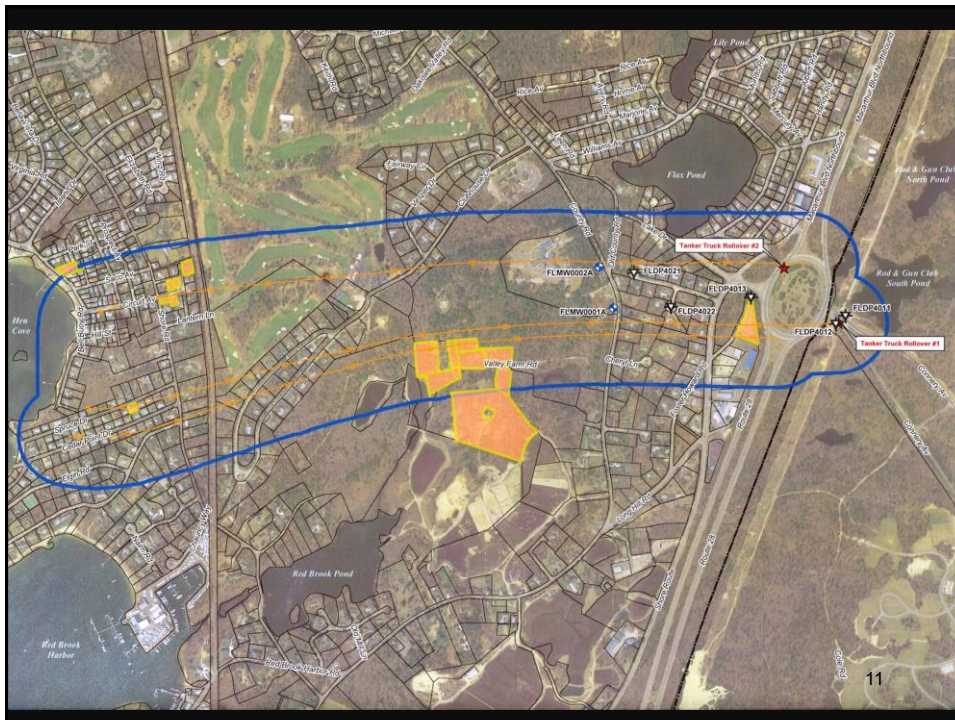
5



6







Flight Line Site Investigation Recommendations

| RI | No Further Action |
|--|-------------------------|
| Former Building 118 Release Area and Drainage Ditch #3 | FS-1 |
| ANG Motor Pool and Drainage Ditch #2 | Runway 32 Approach Area |
| Building 122 Release Area | Hangar 2816 |
| Hangar 3170 and Hangar 3172 | |
| JBCC Wastewater Treatment Plant | |
| Fire Station Building 3132, Lower 40 Ramp Area and Drainage Ditch #1 | |
| Tanker Truck Rollover #1 and #2 | |



Sampling and Analysis Challenges

- Sampling
 - Eliminate contact with products such as packaging, pens, clothing (detergent), and food wrappers
 - Cross-contamination
 - PFC detects in a newly constructed private well
- Analysis
 - Equipment
 - Detection Limits

13



Questions?

14

