



# Stormwater and Waste Site Cleanup

An Introduction to the Issues

What's been driving  
Stormwater  
Regulation and  
Design?

Flood Protection  
Safety



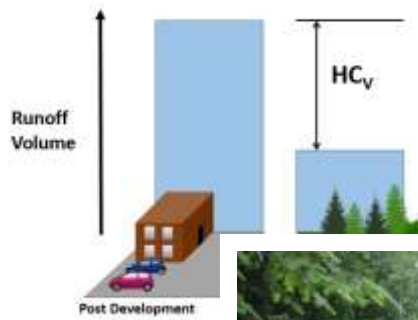
# Why have Stormwater Requirements Expanded?

## Protection and Restoration of Surface Waters

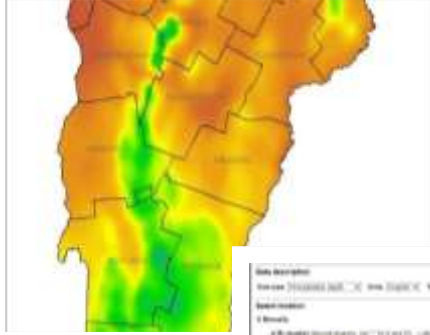


# Stormwater Volume, Phosphorus and Nitrogen

## Surface Water Impairments



# Climate Resiliency



**Web Description:**  
Project: [Project Name] | [Project Details]

**Project Location:**  
[Address/Location]

**Project Details:**  
[Detailed description of the project, including objectives and scope.]

**Map:**  
[Interactive map showing the project location within a regional context.]

# "Greenfield" Development



# Downtown Revitalization and Redevelopment

Opportunities to Improve Stormwater Treatment and Control



# Redevelopment and Expansion at Existing Sites



## Vermont Stormwater Regulatory Requirements

- Creation of 1 acre or more of impervious surface, or expansions when total resulting is 1 acre.
- The redevelopment of 1 acre or more of impervious surface.
- Existing sites with 3 acres or more of impervious located in the Lake Champlain or Lake Memphremagog watersheds (no later than 2023).
- The creation of or redevelopment of ½ acre or more of impervious surfaces (2022)
- 2017 Vermont Stormwater Management Manual, requires runoff reduction and prioritizes BMPs that infiltrate, where feasible.
- Infiltration prohibited from hotspot land use or activities, may include waste sites.



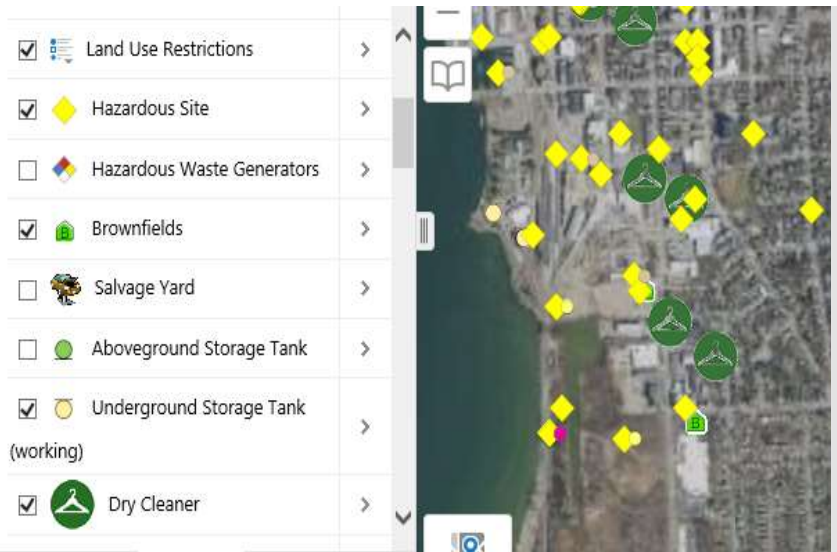
## Stormwater vs Contaminated Sites.

What do I need to know and where do I find it?

### Vermont Rules and Resources

- Stormwater Permitting Rule –March 2019  
[Stormwater Permitting Rule](#)
- Stormwater Management Manual Rule -2017  
[Vermont Stormwater Management Manual Rule](#)
- Groundwater Regulations – 1990's – GWPRS 7/6/19  
<https://dec.vermont.gov/water/groundwater>
- Contaminated Site Guidance – 1988 – IRULE 7/6/19  
<https://dec.vermont.gov/water/groundwater>
- ANR Atlas  
<https://anrmaps.vermont.gov/websites/anra5/>

## Stormwater considerations on/near contaminated sites in Vermont



## Contact Information

**Kevin Burke**, *Environmental Analyst*

**VT DEC - Stormwater Program**

1 National Life Drive, Main 2

Montpelier, VT 05620-3522

802-490-6168 / [kevin.burke@vermont.gov](mailto:kevin.burke@vermont.gov)  
[dec.vermont.gov/watershed](http://dec.vermont.gov/watershed)



## Contact Information

**Trish Coppolino**, *Environmental Program Manager*

[phone] 802-249-5822

[email] [patricia.coppolino@vermont.gov](mailto:patricia.coppolino@vermont.gov)

### **Department of Environmental Conservation**

Waste Management & Prevention Division

Sites Management Section

One National Life Drive, Davis 1

Montpelier, VT 05620-3704

<https://dec.vermont.gov/waste-management/contaminated-sites>