

# Reducing Waste Disposal at Rural Transfer Stations

Jennifer Griffith & Rachel Smith  
September 28, 2017



## What is NEWMOA?

Northeast Waste Management Officials' Association

- Non-profit, non-partisan interstate association
- Solid waste, hazardous waste, waste site cleanup, & pollution prevention programs
- CT, ME, MA, NH, NJ, NY, RI, & VT
- Formally recognized by EPA in 1986
- [www.newmoa.org](http://www.newmoa.org)



***Leading the Northeast to a Sustainable, Waste-Free Future***

# Improving Safety & Reducing Waste at Rural Transfer Stations

Funded by USDA Rural Utilities Services Solid  
Waste Management Grant

*This material is based on work supported by the Rural  
Utilities Service, United States Department of Agriculture.*

*Any opinions, findings, and conclusions or  
recommendations are solely the responsibility of the  
authors and do not necessarily represent the official views  
of the Rural Utilities Services.*

## Project Partners

### ● Vermont

- ❖ Northeast Kingdom Waste Management District (NEKWMD)
- ❖ Department of Environmental Conservation

### ● New Hampshire

- ❖ North Country Council (NCC)
- ❖ Department of Environmental Services



## Project Outline

- Consumer Handouts:

- ❖ Reducing Your Waste
- ❖ The Benefits of Reuse...
- ❖ WHY Recycle...
- ❖ Recycle Right!
- ❖ Don't Trash That!

- Accompanying Posters

- Local Workshops

- Outreach Webinars

- Project Website:

[www.newmoa.org/solidwaste/projects/transferstations/](http://www.newmoa.org/solidwaste/projects/transferstations/)

## Today's Webinar

Focus on strategies for transfer station workers to communicate with residents

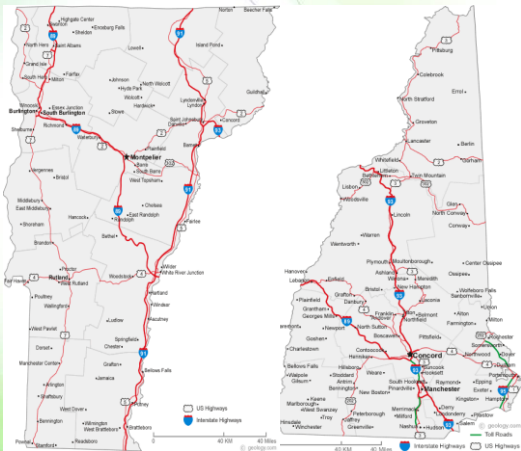
- Overview of transfer stations & recycling centers in NCC & NEKWMD
- Promoting Recycling
- Promoting Reuse
- Promoting Reduce
- Summary of workshops & survey results
- Q&A

# Overview

## Transfer Stations & Recycling Centers in NCC & NEKWMD

**8**

- **Northeast Kingdom Waste Management District**
  - Lyndonville, VT
  - Provides recycling, HHW, & other services & helps towns comply with VT DEC requirements
  - [www.nekwmd.org](http://www.nekwmd.org)
- **North Country Council**
  - Littleton, NH
  - Regional planning
  - Economic development
  - [www.nccouncil.org](http://www.nccouncil.org)



The map displays the regional context for the two organizations. The Northeast Kingdom Waste Management District (NEKWMD) is located in the northern part of Vermont, near Lyndonville. The North Country Council is located in the southern part of Vermont, near Littleton, New Hampshire. The map shows major highways (US Highways, Interstate Highways, and Toll Roads) and various towns in the region.

## Similarities & Differences

- Most rural towns operate their own transfer stations
  - Most co-located with drop-off recycling centers
- Virtually all disposal facilities in the private sector
  - Only one landfill in all of VT (almost in Canada – but relatively close to NEKWMD towns)
  - More options in NH, including one waste-to-energy
- Burning trash is illegal in NH & VT (& all northeast)
- Pay-as-you-throw
  - Mandated for all VT communities since 2015
  - Some NH communities have it – many don't
- Most TSs charge fees for bulky wastes

## Similarities & Differences

- NEKWMD provides centralized services
  - Towns collect self-sorted recyclables in Gaylords & bags
  - NEKWMD trucks pick up recyclables & other collected materials & transports to NEKWMD facility
  - Recyclables baled & marketed from NEKWMD facility
  - NEKWMD arranges shipments of collected HHW, electronics, & other materials





## Similarities & Differences

- Most NCC towns bale & market their own recyclables



## The 3 R's

The 3 R's = Reduce, Reuse, Recycle

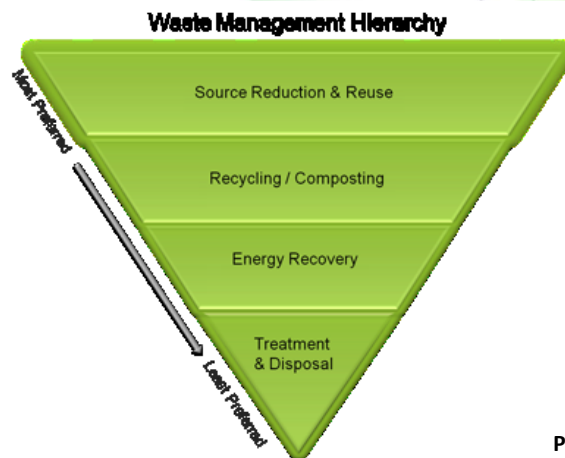


Photo Source: EPA

## Today's Objectives

### ***Offer Strategies to Communicate on***

- ***Recycling*** for people who don't recycle (or don't recycle much)
- ***Reusing & Reducing*** for supporters of recycling (and everyone else too!)

## Definitions

- ***Reduce*** – Cutting back on the amount of items we purchase, use, & dispose of
- ***Reuse*** – Finding a new way to use the item; it is kept whole & may be sold or donated for use again
- ***Recycle*** – Using all or part of the item, separated into its individual components so that it can be used to create new products

## Community Based Social Marketing

An approach to achieving sustainable behavior in communities through:

1. Selecting which behavior to promote
2. Identifying the barriers & benefits
3. Developing strategies to overcome the barriers
4. Piloting the program
5. Evaluating the program once its implemented



Source: [www.cbsm.com](http://www.cbsm.com)

Reduce  
Reuse  
**Recycle**



## General Communication Tips

### Focus on positive messaging

- More recycling = less trash = saves \$
- Saves money on landfill disposal & transport to the landfill
  - Lowers town expenses; helps keep taxes from increasing
- Conserves natural resources, energy, & raw materials
- Returns products & materials back into the economy & creates jobs

## General Communication Tips

Make sure that recycling program is as convenient & easy to understand as possible:

- Label drop-off areas clearly
- Publicize program:
  - Distribute outreach materials regularly
  - Make sure the information is sent to new residents
  - Get the word out about changes in service/s

## General Communication Tips

- Actions are easy to understand
  - Drop-off areas are clearly labeled
  - Examples of labeled & segregated collection signage



Lancaster Transfer Station



Littleton Transfer Station

## General Communication Tips

### Regular communications with public

- Distribute educational materials once a year
  - Increases understanding about what is & is not accepted
  - Reduces contamination
- Send material to new residents when they move in
- If town has transfer station sticker program – distribute material when get new sticker
- Make sure to publicize program changes before & after they happen

## General Communication Tips

Tailor your messaging to these two separate audiences/constituents

- People that already recycle
- People that do not recycle



## Communication Tips: Recyclers

- Thank them for doing a good job
- Even the best recyclers can make mistakes
- Focus on what to recycle & where
  - Provide clear instructions
  - “Dos & Don’ts” can help
    - Message: when things that can’t be recycled are added or recyclables are put in the wrong place, a worker needs to remove them, which requires labor & can be dangerous
- When recycling is done right, the town generates materials that producers want to buy
  - Generates revenue & keeps recycling viable

# New Handout



Recycling is great, but it's important to do it correctly. The top five items that cause the most frequent problems at recycling drop-off centers are listed below. **Please do not put these in the recycling:**

ITEM	Why Not?	Recycling
<b>STYROFOAM®</b> (Examples: meat packing trays, restaurant takeout containers, coffee cups, packing materials)	<ul style="list-style-type: none"> <li>Contaminates other plastics</li> <li>Is expensive to collect separately and ship for recycling</li> <li>Not in your truck</li> </ul>	
<b>PAPER TOWELS, NAPKINS, TISSUES</b> (Examples: paper towels, napkins, tissues)	<ul style="list-style-type: none"> <li>Not sturdy enough to recycle and break apart and contaminate the other paper</li> <li>Often used, the greasy, soiled food, and other contaminants can be a safety hazard for workers at the transfer station</li> </ul>	
<b>COATED PAPER CONTAINERS</b> (Examples: coffee cups, tea cream containers, milk and orange juice cartons, almond milk cartons, restaurant takeout containers)	<ul style="list-style-type: none"> <li>Not made of all paper or all plastic and so cannot be recycled in either one</li> <li>Is expensive to collect separately and ship for recycling</li> <li>Not in your truck</li> </ul>	
<b>PLANTING POTS &amp; TREES</b> (Examples: coffee cups, tea cream containers, milk and orange juice cartons, almond milk cartons, restaurant takeout containers)	<ul style="list-style-type: none"> <li>Not compatible with other plastics, so neither other recycling rules have been</li> <li>Is expensive to collect separately and ship for recycling</li> <li>Not in your truck</li> </ul>	
<b>MEDICAL WASTE</b> (Examples: syringes, needles, bandages, etc.)	<ul style="list-style-type: none"> <li>Not compatible with other plastics, so neither other recycling rules have been</li> <li>Is expensive to collect separately and ship for recycling</li> <li>Not in your truck</li> </ul>	

NEWMOA is an equal opportunity provider and employer.

**WHEN RECYCLING IS DONE RIGHT, YOUR TOWN GENERATES PRODUCTS THAT OTHERS WANT TO BUY**  
Help your community generate as much money as possible from recycling by:

- Recycling only items the transfer station accepts
- Rinsing containers to remove dirt & food
- Removing metal lids from glass containers & keeping plastic lids on plastic containers
- Recycling only plastics labeled with a number that the transfer station accepts & putting each type in the correct bin
- Separating paper by type & putting in the correct bin

**CONSIDER RECYCLABILITY AT THE POINT OF PURCHASE**  
Unfortunately, many things that seem like they "should" be recyclable are not. For example, just because something is plastic, doesn't mean it's recyclable. Plastics labeled numbers 1 and 2 are accepted just about everywhere, but numbers 3, 4, 5, 6, and 7 are not, so check what's acceptable at your facility.



This handout focuses on the importance of Recycling Right. It is one in a series developed for local transfer stations to improve safety and promote waste reduction. For additional documents visit: [www.newmoa.org/solidwastepages/solidwastestationpublications.cfm](http://www.newmoa.org/solidwastepages/solidwastestationpublications.cfm)

**NEWMOA**  
www.newmoa.org

This material is based on work supported by the Rural Utilities Service, United States Department of Agriculture. Any opinions, findings, and conclusions or recommendations expressed in this material are those of the author(s) and do not necessarily represent the official views of the Rural Utilities Service. Mention of trade names or company names is not intended to constitute an endorsement by NEWMOA, NEWMOA is a registered name, or the USDA. The endorsement of this document is not necessarily an endorsement by NEWMOA or the USDA. The Rural Utilities Service, or the USDA, is not responsible for any errors or omissions in this document. Published July 2017

**Did You Know?**  
When you put things into the recycling container that can't be recycled or put them in the wrong place, someone working at the transfer station needs to sort through and remove them, which is time consuming and can be dangerous. If they stay in the bin, they can ruin the whole lot and that could mean it all ends up sent for disposal.

**Your transfer station attendant is there to help. They know what can and cannot be recycled and what to put where. Please cooperate with their instructions.**



**What Can You Do?**  
Many local establishments use drink cups and takeout containers that are not recyclable. When for action include:

- Advocate for the use of packaging and takeout containers that are recyclable by your local system
- Bring your own reusable containers to a restaurant when you think there will be leftovers so you can manage them yourself

**Local businesses can help:**

- Use 550s and other items, pick up mixed dishes and leftovers from a yard sale or secondhand shop instead of using plasticware and paper plates
- Use cloth napkins and towels instead of paper products
- Push for local to reusable bags and containers

[www.newmoa.org/solidwaste/projects/transferstations/publications.cfm](http://www.newmoa.org/solidwaste/projects/transferstations/publications.cfm)

## Communication Tips: Non-Recyclers

### Non-recyclers

- Tend to not believe the benefits of recycling outweigh the effort to do it
- Don't always listen to "authority" working at the transfer station
  - Hearing from a different voice can be influential
- Tend not to respond to facts about the benefits of recycling
  - Need to focus on the direct impact to them and their community



## Communication Tips: Non-Recyclers

Ask for town support for the message that recycling is a priority:

- Ask elected officials to visibly demonstrate support for recycling, including:
  - Asking religious leaders, community groups, & local businesses to help get the message out
  - Provide funding for outreach materials & actions
    - Promote recycling on municipal trucks & other town vehicles – serves as a reminder that recycling is available
- Highlight “top notch” recyclers in the local newspaper, website, or newsletter (individual &/or community group)

## Communication Tips: Non-Recyclers

**Emphasize Cost Savings** - Anything that is put in the trash that could be recycled wastes \$\$

- Directly from their wallet due if town has PAYT
- Indirectly through town expenses:
  - Recycling lowers town’s disposal costs & can help keep taxes from increasing
    - Disposal costs are accrued by weight so more trash (& heavier trash) costs more
    - Transporting to disposal is costly – the greater the volume of trash, the more often it needs to be transported



## Communications Message

### It's Not That Hard to Do

- Find a corner of kitchen area, covered porch or garage for recyclables collection
- Use a cardboard box or plastic tub to collect metal, glass, & plastic containers
  - Rinse before to keep area clean
- Use smaller boxes/tubs or paper bags for paper
- Easy to put in car
- Clear instructions & friendly people in recycling center
  - May get good stuff free from the swap area

## Communications Message

They're probably already doing some recycling – give positive feedback

- Most transfer stations have containers for scrap metal recycling
- Free to drop-off



Photo: Dalton Transfer Station

## Communications Message

### Contributes to the Community

- Good to not be wasteful & to conserve resources
- Help the town save money
- Return products & materials back into the economy & create jobs

## Communications Message

### Recycling Can Be Mandatory

- Ordinances in some New Hampshire communities
- In all of Vermont:
  - Aluminum cans, pie plates, and foil
  - Steel cans
  - Glass bottles & jars from food & beverages
  - Corrugated cardboard
  - Paper – including white & colored paper, newspaper, magazine, catalogues, paper mail & envelopes, boxboard, & paper bags
  - Hard plastics – specifically PET (#1) & HDPE (#2) plastic bottles & jugs
  - **Items on this list are BANNED from solid waste disposal**

# New Handout



**WHY Recycle...**  
in the Northeast Kingdom of Vermont

**IT'S GOOD FOR YOU**  
When you recycle, you can be proud that you are saving money and reducing waste. Recycling helps to make our earth a cleaner and healthier place to live. It is one of the easiest ways you can have a positive impact on the environment.

Recycling helps you be more aware of how you use products and dispose of waste. Studies show that people who recycle save money because they cut down on buying unnecessary items. They instinctively think of what to do with the packaging or the product before buying it.

- Is the item and package easy to recycle?
- Does my recycling center accept this material?
- Can I purchase this same item in used condition or possibly borrow it for free?

**Recycling 10,000 tons of waste creates 36 jobs!**  
Increasing the same amount of waste creates 1 job, and landfilling it creates only 6 jobs.

**NEWMOA**  
www.newmoa.org  
NEWMOA is an equal opportunity employer  
www.ncksolid.org

## IT'S GOOD FOR THE WORLD

Improperly discarded trash has a negative impact on the natural environment. It can pollute watersheds and roadways, and harms wildlife. By recycling, you can help your community be cleaner and healthier.

A recyclable product is something that can be turned back into a new item and used to create a new version or completely different product. This reduces the amount of materials to make the new item and the energy and other resources that go into raw materials extraction, transportation, and processing.

**Recycling 1 ton of paper saves 17 trees, 7,000 gallons of water, 3 cubic yards of landfill space, and 2 barrels of oil.**

## IT'S THE LAW

There are six materials that MUST be recycled by all households in Vermont, including:

- Aluminum cans, pie plates, and foil
- Steel cans
- Glass bottles and jars from food and beverages
- Corrugated cardboard
- Paper - including white and colored paper, newspapers, magazines, catalogs, paper mail and envelopes, booklets, and paper bags
- Hard plastics - specifically PET (#1) and HDPE (#2) plastic bottles and jugs

Many towns recycle more items than these. Visit [www.re3.org/hotels.html](http://www.re3.org/hotels.html) for information about the recyclables collected at your local facility.

Every 1 pound of recycled #1 (PET) plastic used in place of virgin material reduces the energy consumed during production by 84%.

## Recycling Saves Money

Recycling in Vermont is required to implement a "variable rate pricing system", also known as Pay-As-You-Throw (PAYT) for the collection of solid waste.

Basically, the town or local charge residents for trash disposed based on the amount they throw away. The key component of Vermont's law is that facilities that manage trash, including transfer stations, must also offer recycling and cannot charge a separate fee for it.

By making sure that you separate recyclable materials from landfilling them with your normal trash, you SAVE money on trash disposal.



**In the U.S., waste disposal costs communities an average of \$70 to more than \$200 per ton... compared to recycling program costs of just \$50 to \$150 per ton.**

**Recycling 1 aluminum can saves enough energy to power a TV for 3 hours.**

This handout focuses on the importance of Recycling. It is one of a series developed for rural transfer stations to improve safety and promote waste reduction. For additional documents visit: [www.newmoa.org/handouts](http://www.newmoa.org/handouts) or [www.ncksolid.org/publications.cfm](http://www.ncksolid.org/publications.cfm).

This material is based on work supported by the Rural Utilities Service, United States Department of Agriculture. For systems, findings, and conclusions, the Rural Utilities Service, United States Department of Agriculture is not responsible. For information on the Rural Utilities Service, visit: [www.ruraleservices.com](http://www.ruraleservices.com). Information on this organization or program is not intended to constitute an endorsement by USDA or NRCS. The Rural Utilities Service, United States Department of Agriculture is not responsible for the content of this document or its use.

Published May 2017

Template version that anyone can customize for their local area:

[www.newmoa.org/solidwaste/projects/transferstations/publications.cfm](http://www.newmoa.org/solidwaste/projects/transferstations/publications.cfm)

# Other Recycling Resources

● **RE3.org Campaign:** <http://www.re3.org>

- Some eye-catching posters on benefits of recycling
- Source: NC Division of Environmental Assistance



**WHY RECYCLE?**  
Making products from recovered materials...  
...saves energy!

90% saved for aluminum  
60% saved for steel  
40% saved for newspaper

check out:  
[WWW.RE3.ORG](http://WWW.RE3.ORG)



● bottle of beer (13 recycled bottles)  
● aluminum can (13 aluminum cans)  
● polyester shirt (13 plastic bottles)

**WE'VE GOT PLANS FOR YOUR BOTTLES AND CANS.**

## Other Recycling Resources

- MA Dept. of Environmental Protection
  - Recycle IQ Kit: (Applies to Single-Stream Programs)  
[www.mass.gov/eea/agencies/massdep/recycle/grants/recycling-iq-kit.html](http://www.mass.gov/eea/agencies/massdep/recycle/grants/recycling-iq-kit.html)
- Environmental Protection Agency
  - Municipal Government Toolkit:  
<https://archive.epa.gov/region4/rcra/mgtoolkit/web/html/improving.html#remind>
- SC Dept. of Health & Environmental Control
  - Recycle Guys: <http://www.recycleguys.org>

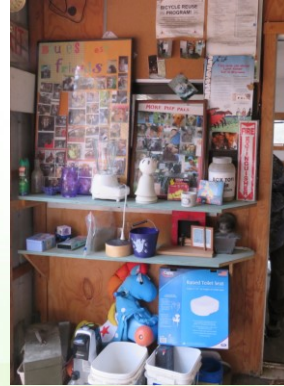
Reduce  
**Reuse**  
Recycle



## Challenge: Space Limitations

### Reuse at the transfer station

- Need a covered or sheltered location
- Need to manage items that are not picked up
- Often limited to smaller items



## Challenge: Staff Limitations

- There is only one transfer station attendant & they are helping someone else
- The resident quickly dumps the items in the trash compactor, before the attendant can get to them
- The resident doesn't even realize their mistake – therefore, they are apt to do it again



## Challenge: Convenience

- The resident has already packed up the materials & driven to the transfer station
- Even if they are made aware of other options (donation centers) – they may be unwilling to make another stop



Vehicle Drop-off Areas at Barnet Transfer Station in Vermont

## Communications Message

### Benefits:

- Saves money on landfill disposal & transport to the landfill
- Conserves natural resources, energy, & raw materials
- Returns products & materials back into the economy & helps create jobs
- **Helps people in the community who need these items but cannot afford to buy them new**

## Communications Message

- Donate through charitable organizations:
  - ✓ Salvation Army
  - ✓ Goodwill
  - ✓ Habitat for Humanity ReStores
  - ✓ Often located in the larger “shopping” community
  - ✓ Tax deduction for donations
- Sell at consignment shops or online:
  - ✓ FreeCycle
  - ✓ Local Facebook groups
  - ✓ Local Craigslist

## Communications Strategy

- Need to educate residents before they bring reusable items to the transfer station
  - What types of items are appropriate for reuse
  - Avoid damage during transport (&/or storage)
  - Identify easiest reuse options
- Post information at transfer station &/or have a handout available

# Communications Strategy

## Provide Information on Reuse Opportunities

- Post signs & notices with information on local reuse options & donation centers
- Partner with local groups or businesses
- Distribute the information to people early & often

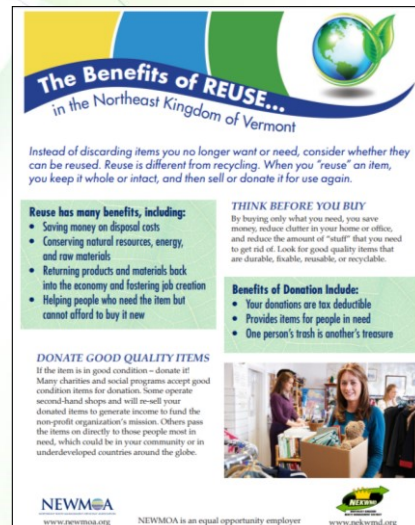


FCSWMD - Massachusetts

# Communications Strategy

## Handout

- Include in regular town mailings, such as tax bills, utility bills, & other communications
- Distribute at HHW collections & other community events
- Post on local community bulletin boards
- Post on town's website, Facebook page, & other social media platforms
- Send the information out to people regularly



Includes local options on back  
Template version available

## Other Reuse Ideas

### Repurposing & Repair of Items

- Partner with local boy/girl scout troops, veterans organizations, or small businesses to host a “fix-it clinic” or “repair cafe”
- Encourage people to explore Do-It-Yourself (DIY) tutorials online



Photo Source: Pinterest

## Other Reuse Ideas

### Promote Swapping at the Transfer Station

- Need a covered or sheltered location
- Or host a one-day event in the summer



Photos: Various Swap Shops at Transfer Stations in Massachusetts



## Other Reuse Ideas

### Community One-day Swap Event

- Need to manage items that are not picked-up
  - Coordinate with community organizations to take high quality items for donation
  - Recycle items, if feasible & dispose of the rest



Recycling Rally in Northampton, Massachusetts

# Reduce

Reuse

Recycle



## Communications Message

### Reducing Purchasing = Reducing Waste

Focus on direct benefits:

- Saves \$\$\$
  - By buying less & buying carefully
- Reduces clutter - home & yard
- Reduces waste that needs managing
  - Direct savings if community has PAYT
  - Lowers town's waste transport & disposal costs

## Communications Message

“Consider before buying” concept:

- Think about whether they really need the item
- Can they borrow it from someone or buy it second-hand?
- Is it well-made & fixable so it can be given to someone else when they are done with it?
- Can it be recycled? If not, it will be trash
- Is it made with recycled content?
  - Helps close the loop & boost market demand for materials the transfer station collects for recycling

## Communications Message

### ● Benefits

- Conserves natural resources, energy, & raw materials
- Best way to prevent pollution & waste & save \$\$ is to not purchase to begin with or purchase reusable items instead of disposables
- Recycling is better than disposal, but still uses resources to move items; reduction avoids those impacts

## Communications Message

- Shop at yard sales & secondhand stores
- Avoid using single-use disposable items
  - Drink cups & food take-out containers
    - Bring reusable containers to manage leftovers
    - Use containers that can be recycled at the recycling center
  - Use washable cloth versions of paper napkins, towels, & tissues
  - Pack lunch in reusable bags & containers
  - Use washable plates/cups/silverware at parties & buy them second-hand

## New Handout



## Reducing your waste

### Save Money & Reduce Waste

Cutting down on trash can save you money and help keep your community clean. Start with some quick and easy steps:

#### BUY LESS & BUY RECYCLED!

By buying only what you need, you save money, reduce clutter in your home or office, and reduce the need to throw away. And you can help to get rid of it. To start, you can up your recycling game by being able to identify good quality products that are durable, reusable, recyclable or recyclable.

Choose products made with recycled content, packaged in recycled materials, and close the "recycling loop." This helps maintain material demand for recycled products. And you can conveniently put valuable resources back into use.



The average household receives 148 pieces of junk mail, equal to cutting down 1.5 trees every year – or more than 100 million trees for all U.S. households combined.

**NEUMA**  
www.neuma.org

NEUMA is an equal opportunity employer

The world drinks about 50 billion bottles of water per year. 17 million barrels of oil are required to produce those bottles, which is enough to power 1 million cars for an entire year. Bottom line: It takes 2,000 times more energy to produce bottled water than it does tap water.

#### HOW CAN YOU HELP?

Even the littlest changes can have positive impacts on your wallet, your community, and your environment. Here are five changes you can make to reduce waste:

- 1. Go electronic.** Have paper statements that are normally mailed to you – such as bills, financial statements, newsletters – e-mailed to you instead or access them online. Remove your name and address from junk mail and opt-out lists by visiting: [www.optchoice.theonline.org](http://www.optchoice.theonline.org) and [www.optchoice.org](http://www.optchoice.org).
- 2. If you must use paper:** use less. Use both sides of the paper for printing and copying. Use computer or printable drafts instead of multiple copying and make double-sided copies whenever possible. Use unlined one-sided print on both the scratch paper.

3. Limit single-use items. Avoid buying or using disposable items. Make sure to pack lunches in reusable bags and containers. Use reusable plates, cups, and utensils instead of disposable paper or plastic versions. Use cloth napkins and towels instead of paper products.
4. Shop smart. Bring a reusable bag when shopping. If you forget, ask for paper, and pack as many goods in one bag as possible, without double bagging. Also, reduce the amount of packaging by buying products in bulk. Look for products that are packaged in cardboard or paper board instead of plastic and Styrofoam™.
5. Gift green. When wrapping presents, choose reusable gift bags instead of wrapping paper. Reuse wrapping paper you receive or create a homemade version using leftover fabric tied with ribbon or string.

**Waste Reduction Resources:**  
There are hundreds of other easy ways to cut down on trash. Check out these useful web resources for suggestions:

- **ReThink Recycling:**  
[www.rethinkrecycling.com/residents/reduce-top-10-waste-reduce-waste](http://www.rethinkrecycling.com/residents/reduce-top-10-waste-reduce-waste)
- **Green Choices:**  
[www.greenchoices.org/green-living/waste-recycling/waste-reduction](http://www.greenchoices.org/green-living/waste-recycling/waste-reduction)
- **Global Stewards:**  
[www.globalstewards.org/ecotips.htm](http://www.globalstewards.org/ecotips.htm)
- **Eco-Cycle:**  
[www.ecocycle.org/ecoliving](http://www.ecocycle.org/ecoliving)
- **Greaseto:**  
<http://greaseto.com/happiness/eco-friendly-tips-save-cash>

An average roll of paper towels costs about \$1.40 for 120 sheets, or a little more than 1¢ per paper towel. A family of four can easily spend 84¢ per week, or about \$44 per year. Although cloth napkins and towels have higher upfront costs, they can save you hundreds of dollars over their lifetime.



*This handout focuses on the importance of Reducing Waste. It is one in a series developed for rural transfer stations to improve safety and promote waste reduction. For additional documents visit: [www.newmm.org/solidwastef/projects/transferstations/publications.cfm](http://www.newmm.org/solidwastef/projects/transferstations/publications.cfm).*

This material is based on work supported by the Rural Utilities Services, United States Department of Agriculture. Any opinions, findings, and conclusions or recommendations expressed in this material are solely the responsibility of the authors and do not necessarily represent the official views of Rural Utilities Services. Mention of any organization or company name is not considered an endorsement by NDSM3036, NDSM36-member states, or the US. The views expressed in this document do not necessarily reflect those of NDSM3036, USDA, the Project Partner, or the NDSM36-member states.

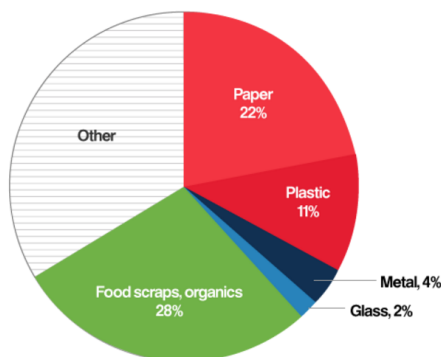
Published June 2017

[www.newmoa.org/solidwaste/projects/transferstations/publications.cfm](http://www.newmoa.org/solidwaste/projects/transferstations/publications.cfm)

# Communications Message

# The Problem with Food Waste

- Food scraps make up 1/3 of total waste generated by a typical family in VT
- Heavy & expensive to dispose of



**Photo Source: VT DEC**

## Communications Message

### ● Reduce food waste

- Eat leftovers before they go bad
- Plan meals prior to shopping (saves \$\$ too)
- Check out these resources:
  - <https://cswd.net/reduce-and-reuse/reducing-food-waste/>
  - [www.epa.gov/recycle/reducing-wasted-food-home](http://www.epa.gov/recycle/reducing-wasted-food-home)

### ● Donate appropriately



Photo Source: VT DEC

## Communications Message

### ● Easy to compost at home

- Contains valuable nutrients for gardens/farms
- Avoids transporting & reduces "yuck" factor
- Check out these resources:
  - <http://nekwmd.org/organics.html>
  - <http://dec.vermont.gov/waste-management/solid/materials-mgmt/organic-materials>
  - [https://nerc.org/documents/Organics/Reduce%20Wasted%20Food%20-%20Tip%20Sheet%20for%20Residents\\_Final.pdf](https://nerc.org/documents/Organics/Reduce%20Wasted%20Food%20-%20Tip%20Sheet%20for%20Residents_Final.pdf)

## Communications Message

- Many transfer stations are collecting for composting
  - Mandatory in Vermont
  - Use sawdust after depositing – controls vector problems
  - Work with local farm to manage containers



Photo: Sheffield-Wheelock Transfer Station in Vermont

## Summary



## Summary

### Reduce Waste

- Reducing Purchasing = Reducing Waste
  - Saves \$\$\$ & reduces clutter
- Encourage people to “think before they buy”
  - Buy less
  - Borrow or buy secondhand (helps keep reuse viable)
  - Purchase quality items that are durable & repairable
  - Buy recycled (helps keep recycling viable)
- Encourage small daily changes
  - Purchase reusable items rather than disposables
  - See handouts for other ideas

## Summary

### Reuse

- Proactive outreach needed
  - Signs & handouts
- Promote existing donation options
  - Helps people in the community who need these items but cannot afford to buy them new
- Promote reuse/refurbish/repurpose ideas
- Support swapping to greatest extent feasible
- If really motivated, help organize:
  - One-day reuse swap event
  - Fix-it clinic

## Summary

### Recycle

- Needs to be easy to understand
  - Clear signage & instructions at facility
  - Regular communication on program
- Messages:
  - Recycling saves \$\$\$
    - Directly due to PAYT
    - Reduced waste transport & disposal costs to town
  - Recycling isn't hard to do
- Encourage people to buy recycled
  - Helps keep recycling program viable

## Summary

### Dispose

- Ultimately, some things need to go in the trash
- Provide information on proper disposal of items that should not go in the trash
- Items banned from disposal in NH
  - Wet cell batteries; mercury products; electronics; leaf & yard waste; C&D waste (incineration only)
- Items banned from disposal in VT
  - Lead acid batteries; nickel-cadmium batteries; mercury products, electronic devices; leaf & yard waste; white goods; waste oil & filters; tires; paint; mandatory recyclables; & food waste (starting in 2020)

# New Handout

**Don't Trash That!**  
In the Northeast Kingdom of Vermont

Some things should not go in your trash because they are a **safety hazard** to workers and others at the transfer station.  
**Please do not put these in the trash:**

**CHEMICALS, PESTICIDES, USED OIL, PAINT, AND OTHER HOUSEHOLD HAZARDOUS WASTES (HHW)**

**Why Not?**

- These materials can create a safety hazard for workers at the transfer station.
- Leaks and spills can contaminate soil and water.

**Instructions:**

- Store carefully at home and bring to a HHW event; visit <http://newmoa.org/columbus.html>
- Many transfer stations collect and will ask the attendant.
- Some locations in the Northeast Kingdom collect paint and related waste for free, find locations at [www.newmoa.org/transfer-station/vermont/05/transfer](http://www.newmoa.org/transfer-station/vermont/05/transfer)

**AMMUNITION, FLARES, FIREWORKS**

**Why Not?**

- These materials can create a safety hazard for workers at the transfer station.

**Instructions:**

- Contact your local police or fire department and follow their instructions.

**METAL OBJECTS**

**All types/uses – including propane tanks:**

**Why Not?**

- Propane tanks of all sizes, even when empty present a safety hazard.
- The transfer station generates income from selling scrap metal in bulk for recycling.

**Instructions:**

- Ask the transfer station attendant where to put propane tanks.
- For metal objects in the designated scrap metal collection area.
- For metal food & drink cans in their regular recycling bins.

**LIQUIDS**

**All types:**

**Why Not?**

- Liquids make a mess at the transfer station, attract bees, rats, and other pests, and cause odors.
- Disposing of liquids in the trash is illegal in Vermont.

**Instructions:**

- If the liquid is from food/beverage, simply empty containers before disposal.
- If the liquid is from chemicals, pesticides, used oil, paint, or other HHW – don't empty! Follow the HHW instructions above.

All Vermont communities have unit-based pricing for trash (also known as pay-as-you-throw or PAYT) so the more you throw out, the more you pay. Disposing of items that should not be included in the trash ends up costing you money.

NEWMOA is an equal opportunity provider and employer.

Some things should not go in the trash because there are better things to do with them. **Please do not put these in the trash:**

## RECYCLABLES

Including paper, some plastics, and containers made of aluminum, steel, and glass.

## Why Not?

- Disposal of recyclable materials is illegal in Vermont.
- Any material disposed costs you money.

## Instructions:

- Bring to the recycling center.



## FOOD WASTE

- Food waste is nutrient rich and can be composted to make a natural fertilizer for farms and gardens.
- Any material disposed costs you money.

## Why Not?

- Consider backyard composting at home.
- Bring to the organic collection container at your transfer station.

## Instructions:



## IT'S THE LAW – NO RECYCLABLES IN THE TRASH!

There are six materials that **MUST** be recycled by all households in Vermont, including:

- Aluminum cans, pie plates, and foil.
- Steel cans.
- Glass bottles and jars from food and beverages.
- Corrugated cardboard.
- Paper – including white and colored paper, newspaper, magazine, catalogues, paper mail and envelopes, bookbound, and paper bags.
- Hard plastics – specifically PET (#1) and HDPE (#2) plastic bottles and jugs.

Many towns recycle more items than these. Visit [www.newmoa.org/towns.html](http://www.newmoa.org/towns.html) for information about the recyclables collected at your local facility.

This handout is based on Don't Trash That, or what not to put in your trash. It is one in a series developed for rural transfer stations to improve safety and promote waste reduction. For additional documents visit: [www.newmoa.org/publications/projects/transferstations/publications.cfm](http://www.newmoa.org/publications/projects/transferstations/publications.cfm)

**NEWMOA**

[www.newmoa.org](http://www.newmoa.org)

This material is based on work supported by the Rural Waste Service, United States Department of Agriculture, New England, and the Northeast Kingdom. Disposal of any hazardous or emergency waste is not covered by this material. NEWMOA, NEK, and its member states are the NEK's. The newmoa.org website does not necessarily reflect the views of NEWMOA, NEK, the Rural Waste Service, or the NEK's member states.

Published July 2017



[www.newmoa.org](http://www.newmoa.org)

Template version available

[www.newmoa.org/solidwaste/projects/transferstations/publications.cfm](http://www.newmoa.org/solidwaste/projects/transferstations/publications.cfm)

# Workshop Summaries

## NCC Workshop Summary

- 21 transfer station workers from 16 towns
  - NH requires transfer station worker training & DES has a robust program
- 19 survey responses
  - 17 intend to use the outreach materials
  - Ideas they intend to implement/evaluate:
    - 13 promote reuse/refurbish/repurpose ideas
    - 12 improve recycling signage & outreach materials
    - 11 promote recycling to people that don't already
    - 10 ask town officials to support recycling as priority
    - 10 encourage people to "think before they buy"

## NEKWMD Workshop Summary

- 10 transfer station workers from 5 towns
  - Transfer station workers need to be trained but no program in VT – mostly done "on the job"
- 9 survey responses
  - 8 intend to use the outreach materials
  - Ideas they intend to implement/evaluate:
    - 9 improve recycling signage & outreach materials
    - 6 promote recycling to people that don't already
    - 6 provide info on proper disposal of items that should not go in the regular trash
    - 5 encourage people to "think before they buy"



## NCC Workshop Summary

- Illegal disposal items:
  - TVs; CFLs; tires; batteries; paints; antifreeze; pesticides; unknown chemicals; liquids; ammunition
- Good condition items thrown away:
  - Furniture; tools; bikes; lawn mowers; gas grills; doors; windows; toys; clothing; Christmas stuff
- Recyclable thrown away:
  - Aluminum & metal cans; bottles; plastics; paper; cardboard; glass

## NEKWMD Workshop Summary

- Illegal disposal items:
  - TVs; cans; plastics; refrigerators; paint; electronics
- Good condition items thrown away:
  - Furniture; tools; bikes; lawn mowers; paint; air conditioners; electronics; toys; clothing; random household items
- Recyclables thrown away:
  - Paint; batteries; plastic bottles; plastic films; paper; cardboard; glass

# Other NEWMOA Resources

## Other USDA Projects

Focused on rural areas:

- Pay-as-you-throw
- Bulky waste
  - Mattresses
  - Furniture
  - Carpet
  - Large Rigid Plastics
- Waste Paint

All publications have template versions you can use: [www.newmoa.org/solidwaste/projects](http://www.newmoa.org/solidwaste/projects)

59

# PAYT Resources

[www.newmoa.org/solidwaste/projects/smart](http://www.newmoa.org/solidwaste/projects/smart)

- Case studies of 11 rural communities – some with before/after cost data
- Handout for the public to generate interest in PAYT
- “Fair Pricing Strategies” brochure for “decision-makers” with case studies
- SMART Toolkit for Rural Communities – website compilation of resources



# Bulky Waste Resources

4 brochures with detail: furniture, mattresses, carpet, & large rigid plastics

Handout for the public with local information (template available)



## TIPS FOR REUSING & RECYCLING BULKY WASTES

...The Northeast Kingdom Waste Management District

"Bulky Waste" is an umbrella term used to describe items such as mattresses and box springs, furniture, carpet, and large rigid plastic items. These are difficult to manage at their end of life because they are large and heavy. This handout includes options for properly managing bulky items you no longer need or want.

### Benefits of Reusing & Recycling Bulky Items

Everyone benefits by:

- Saving money on landfill transportation & disposal costs
- Conserving energy & raw materials
- Reusing products & materials back into the economy & fostering job creation
- Helping people who cannot afford to buy new

### Reuse

If the item is in good condition – donate it! Many charities and social programs accept good condition items for donation. You may also be able to donate or resell good quality used items through yard sales, or online exchanges.

**Local Online Exchanges:**

- First Parish Forum - <http://firstparishforum.com>
- Vermont Craigslist - <http://vermont.craigslist.com>
- Orleans County Free Cycle - <https://groups.freecycle.org/group/OrleansVT>
- Saint Johnsbury Free Cycle - <https://groups.freecycle.org/group/SaintJohnsburyFreeCycle>
- Washington County Free Cycle - <https://groups.freecycle.org/group/WashingtonCountyVT>

**Local Reuse or Donation Centers:**

Donation is with appropriate items in very good condition (no holes, tears, or stains, and no broken or missing pieces). **Should first determine** that the center can deal with the specific item(s) you have:

- 100% in Lunenburg: [www.100percent.org](http://www.100percent.org) - but does facilitate donations between individuals (Bulky disposal: [www.bulkydisposal.com](http://www.bulkydisposal.com))
- Salvation Army in Saint Johnsbury: [www.salvationarmy.org](http://www.salvationarmy.org)
- ReStore in Barre (see map below): [www.restorevt.org](http://www.restorevt.org)
- ReStore in Burlington: [www.restorevt.org](http://www.restorevt.org)

**Refurbish, Repurpose, Resell, & Donate**

Furniture that may not be suitable for donation or resale may be able to be repaired or repurposed. Look for DIY tutorials on the internet or find inspiration through community Facebook pages and Pinterest boards.

The best way to avoid having to deal with bulky wastes is to try to buy high-quality items that won't break easily.

[www.newmoa.org/solidwaste/projects/bulky](http://www.newmoa.org/solidwaste/projects/bulky)

# Waste Paint Resources

Brochure with detail & case studies

Handout for the public with local information  
(template available)



[www.newmoa.org/solidwaste/projects/paint](http://www.newmoa.org/solidwaste/projects/paint)

## Questions?

Jennifer Griffith  
[jgriffith@newmoa.org](mailto:jgriffith@newmoa.org)  
(617) 367-8558, ext. 303

Rachel Smith  
[rsmith@newmoa.org](mailto:rsmith@newmoa.org)  
(617) 367-8558, ext. 304

NEWMOA  
89 South Street, Suite 600  
Boston, MA 02111  
[www.newmoa.org](http://www.newmoa.org)