

Reducing Waste Disposal at Rural Transfer Stations and Getting the Message Out

Jennifer Griffith
September 26, 2017
North Country Council
Littleton, NH



What is NEWMOA?

Northeast Waste Management Officials' Association

- Non-profit, non-partisan interstate association
- Solid waste, hazardous waste, waste site cleanup, & pollution prevention programs
- CT, ME, MA, NH, NJ, NY, RI, & VT
- Formally recognized by EPA in 1986
- www.newmoa.org



Leading the Northeast to a Sustainable, Waste-Free Future

Improving Safety & Reducing Waste at Rural Transfer Stations

Funded by USDA Rural Utilities Services Solid
Waste Management Grant

*This material is based on work supported by the Rural
Utilities Service, United States Department of Agriculture.*

*Any opinions, findings, and conclusions or
recommendations are solely the responsibility of the
authors and do not necessarily represent the official views
of the Rural Utilities Services.*

Project Partners

• New Hampshire

- ❖ North Country Council (NCC)
- ❖ Department of Environmental Services

• Vermont

- ❖ Northeast Kingdom Waste Management District (NEKWMD)
- ❖ Department of Environmental Conservation



Project Outline

- Consumer Handouts:
 - ❖ Reducing Your Waste
 - ❖ The Benefits of Reuse...
 - ❖ WHY Recycle...
 - ❖ Recycle Right!
 - ❖ Don't Trash That!
- Accompanying Posters
- Local Workshops
- Outreach Webinars
- Project Website:
www.newmoa.org/solidwaste/projects/transferstations/

Today's Workshop

- Short Introduction
 - ❖ Jennifer Griffith, NEWMOA
- Quick "before" survey
- Reducing Waste Disposal
 - ❖ Jennifer Griffith, NEWMOA
- Quick "after" survey
- Break (refreshments)
- Transfer Station Brochure Template
 - ❖ Regan Pride, NCC

Reducing Waste Disposal

The 3 R's

The 3 R's = Reduce, Reuse, Recycle



Photo Source: EPA

Today's Objectives

Offer Strategies to Communicate on

- **Recycling** for people who don't recycle (or don't recycle much)
- **Reusing & Reducing** for supporters of recycling (and everyone else too!)

Definitions

- **Reduce** – Cutting back on the amount of items we purchase, use, & dispose of
- **Reuse** – Finding a new way to use the item; it is kept whole & may be sold or donated for use again
- **Recycle** – Using all or part of the item, separated into its individual components so that it can be used to create new products



Reduce
Reuse
Recycle

General Communication Tips

Focus on positive messaging

- More recycling = less trash = saves \$
- Saves money on landfill disposal & transport to the landfill
 - Lowers town expenses; helps keep taxes from increasing
- Conserves natural resources, energy, & raw materials
- Returns products & materials back into the economy & creates jobs

General Communication Tips

Make sure that recycling program is as convenient & easy to understand as possible:

- Label drop-off areas clearly
- Publicize program
 - Outreach materials (use Regan's template!)
 - Regular communication with residents

General Communication Tips

- Actions are easy to understand
 - Drop-off areas are clearly labeled
 - Examples of labeled & segregated collection signage



Lancaster Transfer Station



Littleton Transfer Station

General Communication Tips

Regular communications with public

- Distribute educational materials once a year
 - Increases understanding about what is & is not accepted
 - Reduces contamination
- Send material to new residents when they move in
- If town has transfer station sticker program – distribute material when get new sticker
- Make sure to publicize program changes before & after they happen

General Communication Tips

Tailor your messaging to these two separate audiences/constituents

- People that already recycle
- People that do not recycle



Communication Tips: Recyclers

- Thank them for doing a good job
- Even the best recyclers can make mistakes
- Focus on what to recycle & where
 - Provide clear instructions
 - “Dos & Don’ts” can help
 - Message: when things that can’t be recycled are added or recyclables are put in the wrong place, a worker needs to remove them, which requires labor & can be dangerous
- When recycling is done right, the town generates materials that producers want to buy
 - Generates revenue & keeps recycling viable

New Handout



Recycling is great, but it's important to do it correctly. The top five items that cause the most frequent problems at recycling drop-off centers are listed below. **Please do not put these in the recycling:**

STYROFOAM®	Why Not?	Recycle!	
Examples: meat packing trays, restaurant take-out containers, coffee cups, packing materials	<ul style="list-style-type: none"> Contaminates other plastics Is expensive to collect separately and ship for recycling Not to your truck 		
PAPER TOWELS, NAPKINS, TISSUES	<ul style="list-style-type: none"> Not sturdy enough to recycle, and break apart and contaminate the other paper Often used, like gloves, coffee filters, and other containers can be a safety hazard for workers at the transfer station 		
COATED PAPER CONTAINERS	<ul style="list-style-type: none"> Examples: coffee cups, ice cream containers, milk and orange juice cartons, almond milk cartons, restaurant take-out containers 	<ul style="list-style-type: none"> Not made of all paper or all plastic and so cannot be recycled in either one Is expensive to collect separately and ship for recycling Not to your truck 	
PLANTING POTS & TREES	<ul style="list-style-type: none"> Not compatible with other plastics, so water when recycling with them Is expensive to collect separately and ship for recycling 	<ul style="list-style-type: none"> Consider repurposing or reuse: use them as planters or for other uses Is expensive to collect separately and ship for recycling Not to your truck 	
MEDICAL WASTE	<ul style="list-style-type: none"> Examples: syringes, needles, scalpels, and needles Can cause a safety hazard for workers at the transfer station Medical items are not recyclable 	<ul style="list-style-type: none"> Return to your medical provider or pharmacy for safe medical waste management For sharps: bring to the sharps container at your transfer station (if available) or make your own container out of an empty laundry detergent bottle, clearly label it "SHARPS", tape securely closed, and put in your truck 	

NEWMOA is an equal opportunity provider and employer

WHEN RECYCLING IS DONE RIGHT, YOUR TOWN GENERATES PRODUCTS THAT OTHERS WANT TO BUY!

Help your community generate as much money as possible from recycling by:

- Recycling only items the transfer station accepts
- Removing containers to remove dirt & food
- Reusing metal lids from glass containers & keeping plastic lids on plastic containers
- Recycling only plastics labeled with a number that the transfer station accepts & putting each type in the correct bin
- Separating paper by type & putting in the correct bin

CONSIDER RECYCLABILITY AT THE POINT OF PURCHASE!

Unfortunately, many things that seem like they "should" be recyclable are not. For example, just because something is plastic, doesn't mean it's recyclable. Plastics labeled numbers 1 and 2 are accepted just about everywhere, but numbers 3, 4, 5, 6, and 7 are not, so check what's acceptable at your facility.



This handout focuses on the importance of Recycling Right. It is one of a series developed for most transfer stations to improve safety and promote waste reduction. For additional documents visit: www.newmoa.org/solidwaste/transferstationsandrecyclinginfo

NEWMOA
www.newmoa.org

This handout is part of a series supported by the Rural Waste Services, United States Department of Agriculture, Farm Forestry, Wildlife, and Conservation Service. Material and equipment in this series were developed in cooperation with NEWMOA, EPA and its member states, and the Rural Waste Services. Material and equipment in this series were developed in cooperation with NEWMOA, EPA and its member states, and the Rural Waste Services. Material and equipment in this series were developed in cooperation with NEWMOA, EPA and its member states, and the Rural Waste Services.

Published July 2017

Did You Know?

When you put things into the recycling container that can't be recycled or put them in the wrong place, common working at the transfer station needs to sort through and remove them, which is time consuming and can be dangerous. If they stay in the bin, they can ruin the whole lot and that could mean it all ends up sent for disposal.

Your transfer station attendant is there to help. They know what can and cannot be recycled and what to put where. Please cooperate with their instructions.



What Can You Do?

Many local establishments use drink cups and take-out containers that are not recyclable. Ideas for action include:

- Advocate for the use of packaging and take-out containers that are recyclable by your local system
- Bring your own reusable containers to a restaurant when you think there will be leftovers so you can manage them yourself
- Recycle single-use disposable items:
- Use 550s and other reuse, pick up mixed dishes and aluminum from a yard sale or second-hand shop instead of using disposables and paper plates
- Use cloth napkins and towels instead of paper products
- Put bottles in reusable bags and containers

www.newmoa.org/solidwaste/projects/transferstations/publications.cfm

Non-Recyclers

Discussion Questions

- Do people throw away things that could easily be recycled at your facility?
 - What types of recyclables do you see thrown away?
 - Have you talked to them about recycling?
 - If so, what's their response?
- Are there people who only bring trash & no recycling?
 - Have you asked them why they don't recycle?
 - What other arguments do they make?
 - What works?

Communication Tips: Non-Recyclers

Non-recyclers

- Tend to not believe the benefits of recycling outweigh the effort to do it
- Don't always listen to "authority" working at the transfer station
 - Hearing from a different voice can be influential
- Tend not to respond to facts about the benefits of recycling
 - Need to focus on the direct impact to them and their community

Communication Tips: Non-Recyclers

Ask for town support for the message that recycling is a priority:

- Ask elected officials to visibly demonstrate support for recycling, including:
 - Asking religious leaders, community groups, & local businesses to help get the message out
 - Provide funding for outreach materials & actions
 - Promote recycling on municipal trucks & other town vehicles – serves as a reminder that recycling is available
- Highlight “top notch” recyclers in the local newspaper, website, or newsletter (individual &/or community group)

Communication Tips: Non-Recyclers

Emphasize Cost Savings - Anything that is put in the trash that could be recycled wastes \$\$

- Directly from their wallet due if town has PAYT
- Indirectly through town expenses:
 - Recycling lowers town’s disposal costs & can help keep taxes from increasing
 - Disposal costs are accrued by weight so more trash (& heavier trash) costs more
 - Transporting to disposal is costly – the greater the volume of trash, the more often it needs to be transported

Communications Message

It's Not That Hard to Do

- Find a corner of kitchen area, covered porch or garage for recyclables collection
- Use a cardboard box or plastic tub to collect metal, glass, & plastic containers
 - Rinse before to keep area clean
- Use smaller boxes/tubs or paper bags for paper
- Easy to put in car
- Clear instructions & friendly people in recycling center
 - May get good stuff free from the swap area

Communications Message

They're probably already doing some recycling – give positive feedback

- Most transfer stations have containers for scrap metal recycling
- Free to drop-off



Photo: Dalton Transfer Station

Other Recycling Resources

- **RE3.org Campaign:** <http://www.re3.org>
 - Some eye-catching posters on benefits of recycling
 - Source: NC Division of Environmental Assistance



Reduce
Reuse
Recycle

Communicating About Reuse

- Do people throw away things that are in good shape & could be reused?
 - What types of good stuff do you see thrown away?
- What reuse options are there?
 - Do you have a reuse area at your facility?
 - Do you know of charitable options?
 - Do you have a way to share options with residents?

Communications Message

Benefits:

- Saves money on landfill disposal & transport to the landfill
- Conserves natural resources, energy, & raw materials
- Returns products & materials back into the economy & helps create jobs
- **Helps people in the community who need these items but cannot afford to buy them new**

Challenge: Space Limitations

Reuse at the transfer station

- Need a covered or sheltered location
- Need to manage items that are not picked up
- Often limited to smaller items



Communication Challenges

Staff limitations:

- The transfer station attendant is often helping someone else
- The resident dumps their item & doesn't realize there are other options so will do it again

Convenience:

- The resident has already packed up the item & driven to the transfer station
 - Might have ruined it to get in the vehicle!
- Even if made aware of other options (donation centers) – they may be unwilling to take the item there (or back home)

Communications Strategy

- Need to educate residents before they bring reusable items to the transfer station
 - What types of items are appropriate for reuse
 - Avoid damage during transport (&/or storage)
 - Identify easiest reuse options
- Post information at transfer station &/or have a handout available

Communications – Reuse

- Donate
 - Charitable organizations:
 - ✓ Pemi-Valley Habitat for Humanity ReStore in Plymouth
 - ✓ Littleton FreeCycle Group (online)
- Sell
 - Consignment shops
 - Online resources:
 - ✓ Northern NH, VT, & ME Swap N Trade Facebook Group
 - ✓ Northern NH Buying & Selling Facebook Group
 - ✓ NH Craig's List

Communications Message

- Donate through charitable organizations:
 - ✓ Salvation Army
 - ✓ Goodwill
 - ✓ Habitat for Humanity ReStores
 - ✓ Often located in the larger “shopping” community
- Sell at consignment shops or online:
 - ✓ FreeCycle
 - ✓ Local Facebook groups
 - ✓ Local Craigslist

Communications Strategy

Provide Information on Reuse Opportunities

- Post signs & notices with information on local reuse options & donation centers
- Partner with local groups or businesses
- Distribute the information to people early & often



FCSWMD - Massachusetts

Communications Strategy

Handout

- Include in regular town mailings, such as tax bills, utility bills, & other communications
- Distribute at HHW collections & other community events
- Post on local community bulletin boards
- Post on town's website, Facebook page, & other social media platforms
- Send the information out to people regularly



Includes local options on back
Template version available

Other Reuse Ideas

Repurposing & Repair of Items

- Partner with local boy/girl scout troops, veterans organizations, or small businesses to host a “fix-it clinic” or “repair cafe”
- Encourage people to explore Do-It-Yourself (DIY) tutorials online



Photo Source: Pinterest

Other Reuse Ideas

Promote swapping of larger items at the transfer station

- Need a covered or sheltered location
- Or host a one-day event in the summer



Photos: Various Swap Shops at Transfer Stations in Massachusetts

Other Reuse Ideas

Community One-day Swap Event

- Need to manage items that are not picked-up
 - Coordinate with community organizations to take high quality items for donation
 - Recycle items, if feasible & dispose of the rest



Recycling Rally in Northampton, Massachusetts

Reduce

Reuse

Recycle

Communications – Reduce

- Do you see the same people throwing out a large amount of trash each week?
- What are they throwing away a lot of?
 - Take-out containers
 - Food waste
 - One-time disposables, such as napkins/paper towels/paper plates/plastic ware
 - Small trinkets & other cheap plastic items
 - Furniture & other large items
- Have you ever talked to them about it?

Communications Message

Reducing Purchasing = Reducing Waste

Focus on direct benefits:

- Saves \$\$\$
 - By buying less & buying carefully
- Reduces clutter - home & yard
- Reduces waste that needs managing
 - Direct savings if community has PAYT
 - Lowers town's waste transport & disposal costs

Communications Message

“Consider before buying” concept:

- Think about whether they really need the item
- Can they borrow it from someone or buy it second-hand?
- Is it well-made & fixable so it can be given to someone else when they are done with it?
- Can it be recycled if it's not reusable? If not, it will be trash
- Is it made with recycled content?
 - Helps close the loop & boost market demand for materials the transfer station collects for recycling

Communications Message

• Benefits

- Conserves natural resources, energy, & raw materials
- Best way to prevent pollution & waste & save \$\$ is to not purchase to begin with or purchase reusable items instead of disposables
- Recycling is better than disposal, but still uses resources to collect & move items; reduction avoids those impacts

Communications Message

- Shop at yard sales & secondhand stores
- Avoid using single-use disposable items
 - Drink cups & food take-out containers
 - Bring reusable containers to manage leftovers
 - Use containers that can be recycled at the recycling center
 - Use washable cloth versions of paper napkins, towels, & tissues
 - Pack lunch in reusable bags & containers
 - Use washable plates/cups/silverware at parties & buy them second-hand

New Handout



Reducing your waste
Save Money & Reduce Waste

Cutting down on trash can save you money and help keep your community clean. Start with some quick and easy steps:

RECYCLE IS THE ANSWER
By recycling, you can save money on waste disposal, reduce the amount of "trash" you and your family throw out, and help protect the environment. Recycling is good for you, your family, and our planet.

THE WORLD DRINKS ABOUT 100 BILLION BOTTLES OF WATER PER YEAR. 17 MILLION BOTTLES OF WATER ARE REQUIRED TO PRODUCE THOSE BOTTLES, WHICH IS ENOUGH TO FILL A 1 MILLION GALLON TANK FOR A SMALL TOWN. THAT'S 1 MILLION GALLONS OF WATER THAT COULD BE USED FOR OTHER PURPOSES.

HOW CAN YOU HELP?
There are many things you can do to help reduce waste. Here are some ideas:

- 1. Use alternatives. There are many things you can use instead of paper, such as cloth napkins, reusable containers, and reusable shopping bags. You can also use reusable water bottles and coffee cups.
- 2. If you must use paper, use it wisely. Use both sides of the paper, and recycle it when you're done.

The average household creates 344 pounds of trash each year, equal to cutting down 1.5 trees every year - or more than 100 million trees for all U.S. households combined.

NEWMOA
New England Waste Management Association

1. Avoid single-use items. Avoid buying or using disposable items. Many items are made of plastic, paper, or other materials that are not easily recycled. Instead, choose reusable items like glass bottles, metal containers, and reusable shopping bags.

2. Shop smart. Buy in bulk when you can, and choose items that are made of recycled materials. Look for the "recycled" symbol on products.

3. Use paper wisely. When using paper, use both sides of the sheet. Recycle paper when you're done. Avoid using paper for things that can be done electronically, like shopping or banking.

Alternative Recyclables: Recyclables
There are many other items that can be recycled, including:

- Metal: cans, bottles, and other metal items
- Glass: bottles and jars
- Paper: newspapers, magazines, and other paper products
- Plastic: bottles, containers, and other plastic items
- Textiles: clothing and other fabric items
- Appliances: refrigerators, air conditioners, and other household appliances
- Electronics: computers, televisions, and other electronic devices

On average, each of us generates about 4.5 pounds of trash each day, or about 1,600 pounds per year. That's a lot of trash! But there are many things you can do to reduce the amount of trash you generate. Here are some ideas:



Photo Source: VT DEC

www.newmoa.org/solidwaste/projects/transferstations/publications.cfm

More on Reduce Messages

The Problem with Food Waste

- Food scraps make up 1/3 of total waste generated by a typical family in VT
- Heavy & expensive to dispose of

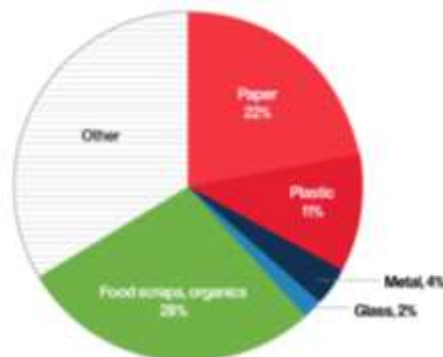


Photo Source: VT DEC

Communications Message

- Reduce food waste

- Eat leftovers before they go bad
- Plan meals prior to shopping (saves \$\$ too)
- Check out these resources:
 - <https://cswd.net/reduce-and-reuse/reducing-food-waste/>
 - www.epa.gov/recycle/reducing-wasted-food-home

- Donate appropriately



Photo Source: VT DEC

Communications Message

- Easy to compost at home

- Contains valuable nutrients for gardens/farms
- Avoids transporting & reduces "yuck" factor
- Check out NH DES "how to" flyer
 - www.des.nh.gov/organization/divisions/waste/swrtas/documents/compost_flier.pdf
- Other resources:
 - <http://nekwmd.org/organics.html>
 - <http://dec.vermont.gov/waste-management/solid/materials-mgmt/organic-materials>
 - https://nerc.org/documents/Organics/Reduce%20Wasted%20Food%20-%20Tip%20Sheet%20for%20Residents_Final.pdf

Communications Message

- Many transfer stations are collecting for composting
 - Mandatory in Vermont
 - Use sawdust after depositing – controls vector problems
 - Work with local farm to manage containers



Photo: Sheffield-Wheelock Transfer Station in Vermont

Summary

Summary

Reduce Waste

- Reducing Purchasing = Reducing Waste
 - Saves \$\$\$ & reduces clutter
- Encourage people to “think before they buy”
 - Buy less
 - Borrow or buy secondhand (helps keep reuse viable)
 - Purchase quality items that are durable & repairable
 - Buy recycled (helps keep recycling viable)
- Encourage small daily changes
 - Purchase reusable items rather than disposables
 - See handouts for other ideas

Summary

Reuse

- Proactive outreach needed
 - Signs & handouts
- Promote existing donation options
 - Helps people in the community who need these items but cannot afford to buy them new
- Promote reuse/refurbish/repurpose ideas
- Support swapping to greatest extent feasible
- If really motivated, help organize:
 - One-day reuse swap event
 - Fix-it clinic

Summary

Recycle

- Needs to be easy to understand
 - Clear signage & instructions at facility
 - Regular communication on program
- Messages:
 - Recycling saves \$\$\$
 - Directly if town has PAYT
 - Reduced waste transport & disposal costs to town
 - Recycling isn't hard to do
- Encourage people to buy recycled
 - Helps keep recycling program viable

Summary

Dispose

- Ultimately, some things need to go in the trash
- Provide information on proper disposal of items that should not go in the trash
- Items banned from disposal in NH
 - Wet cell batteries; mercury products; electronics; leaf & yard waste; C&D waste (landfill disposal)

Other USDA Projects

Focused on rural areas:

- Pay-as-you-throw
- Bulky waste
 - Mattresses
 - Furniture
 - Carpet
 - Large Rigid Plastics
- Waste Paint

All publications have template versions you can use: www.newmoa.org/solidwaste/projects

50

PAYT Resources

www.newmoa.org/solidwaste/projects/smart

- Case studies of 11 rural communities – some with before/after cost data
- Handout for the public to generate interest in PAYT
- “Fair Pricing Strategies” brochure for “decision-makers” with case studies
- SMART Toolkit for Rural Communities – website compilation of resources



Bulky Waste Resources

4 brochures with detail: furniture, mattresses, carpet, & large rigid plastics

Handout for the public with local information



www.newmoa.org/solidwaste/projects/bulky

Waste Paint Resources

Brochure with detail & case studies

Handout for the public with local information

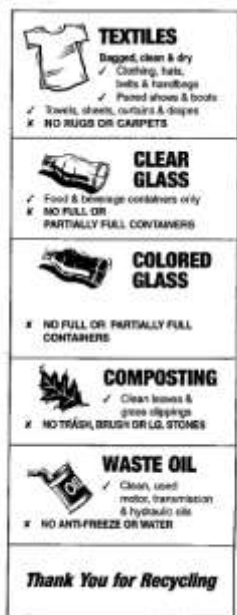


www.newmoa.org/solidwaste/projects/paint

Questions?

Jennifer Griffith
jgriffith@newmoa.org
 (617) 367-8558, ext. 303

NEWMOA
 89 South Street, Suite 600
 Boston, MA 02111
www.newmoa.org



Getting the Message Out... Effectively

Prepared by North
 Country Council
 September 2017

The Good

PLASTICS

☒  T-shirt

NO MOTOR OIL CONTAINERS
PLEASE REMOVE ALL CAPS

5

ALL INFORMATION CONTAINED
HEREIN IS UNCLASSIFIED
DATE 05-10-2010 BY 60322 UCBAW/KST/STP



FOOD AND BEVERAGE CONTAINERS
NON-NEW OR ADD. DATES (VTR)
NO FULL OR PARTIALS



COMPLICATED



WASTE OIL.

& BRO

CARDBOARD AND PAPER BAGS

1310

DOI NOT ACCEPTED FROM

NO WAY
1984

NEWSPAPER &

ANTIFREEZE/FUEL MIXTURE
OR WATER IN OIL.



CLEAN & DRY
PAKED-ON TIES



PAINT
LATEX (WATER-BASE)
OIL-BASE PAINT (OIL-BASE)
GAL. PER GALLON



WE TAKE
IN A STRONG

WILL

NOT BE ACCEPTED

12

83-87
No Bags Please

33

Key Elements

- Name of Town
- Facility Address
- Phone number
- Hours open to the public
- Who can use the facility
- Recycling rules (if any)
- Prices
- Unacceptable materials

Templates

1. **General**
2. **Full sort facility**
3. **Zero-sort facility**

Example – Side 1

FEE CHART	
Major household appliances (Ovens, Water Heaters)	\$25.00
Refrigerators, Air Conditioners, Dehumidifiers	\$20.00
Sinks, Toilets	\$10.00
PROPANE TANKS	
20 lbs.	\$5.00
30 – 200 lbs.	\$10.00
Television Set: up to 19"	\$25.00
Large Console Televisions	\$50.00
VCR's	\$5.00
Copiers	\$15.00
Computer (CPU, monitor, printer)	\$25.00
Upholstered Furniture (Stuffed Chairs, Couches)	\$25.00
Mattresses (Box Spring)	\$10.00
House Metal	\$60.00
TIRES	
HE and ATV (4/16" and 1/2")	\$4.00
Passenger – 14.5" (4" rim add \$1.00)	\$4.00
Truck – 16" (4" rim add \$1.00)	\$4.00
Commercial (Over 16")	\$10.00
Industrial (Loaders, Skidder)	\$75.00
CONSTRUCTION DEBRIS	
Shingles (per square)	\$0.10
(Load of Construction Debris priced per alternate (by weight))	

TRANSFER CENTER RULES

1. Facility is open to (Household) residents and non-residents who pay property taxes.
2. Users will obtain a transfer station sticker from the town office.
3. Failure to pay disposal fee shall result in loss of permit.
4. Fees up to \$250.00 shall be imposed for illegal dumping.
5. No commercial hauling allowed. Including the hauling of tires.
6. See attendants prior to entering metal items, wood or furniture area.
7. Removal of items from the transfer station is not allowed without asking permission first.

Transfer & Recycling Center Name



Street Address
City, ST, ZIP Code
Phone: (603) 555-5555

Please Save This Flyer.

Transfer & Recycling Center

Transfer Station stickers are required and may be picked up at the Transfer Station, or Town Hall.



Hours
Wednesday 12 – 4
Saturday 9 – 4
Sunday 9 – 1
Closed Holidays
Phone: (603) 555-5555

Example – Side 2

Please Place the Following in the Correct Bin. Thank You!

See Attendant With Questions.

How We Operate



Compost Pile

Leaves, Twigs, Limbs, Grass, Garden Waste, and other vegetable Matter.



Burn Pile

Tree Limbs, Branch 5" or less in diameter. Clean Lumber is also accepted.



Materials NOT Accepted

Batteries, Explosives, or Toxic Materials, Fuel Tanks, Catalytic Converters, Dead Animals (Domestic or Pets), White Vehicles. Save Hazardous Waste for Household Hazardous Waste Collection Days.



PLEASE NOTE

Payment for Chargeable Items is Due at the Transfer Station at the Time of Drop.

No Exceptions!



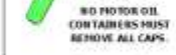
Cans & Foil

Aluminum Cans, Tin/Steel Cans, Aluminum Pail, Food Trays.



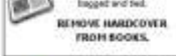
Cardboard Boxes & Brown Paper Bags

Shipping & Boxes. Must be clean, dry and free of oil. Waxed Cardboard is NOT accepted.



Plastic Milk, Water Soda Bottles, Laundry Detergent 4 1/2 & 1/2 Gallons

NO MOTOR OIL. CONTAINERS MUST REMOVE ALL CAPS.



Newspaper and Magazine

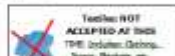
Clean, dry, bagged and tied. REMOVE HARDCOVER FROM BOOKS.



"Other" Plastics (#5-#7)

Includes: Soap Containers, Condiment Bottles, Toys, etc.

NO PLASTIC BAGS.



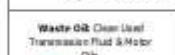
Tires: NOT ACCEPTED AT THIS TIME

Includes: Desktop, Tires, Barrels, etc.



Glass: Household Beverage Containers, Window Glass, etc.

CONTAINERS MUST BE COMPLETELY EMPTY.



Waste Oil: Clean Used Transmission Fluid & Motor Oil.



OIL NOT ACCEPTED FROM COMMERCIAL BUSINESSES.



Paint: Latex (House Paint), Oil Base (Auto, Boat), Full or Partial Accepted.

WASTES FROM COMMERCIAL BUSINESSES WILL NOT BE ACCEPTED.

How to Use Them

1. **Format: MS Word**
2. **We (NCC) can fill it in for you**
3. **You can do it yourself**
4. **Have your secretary do it!**