

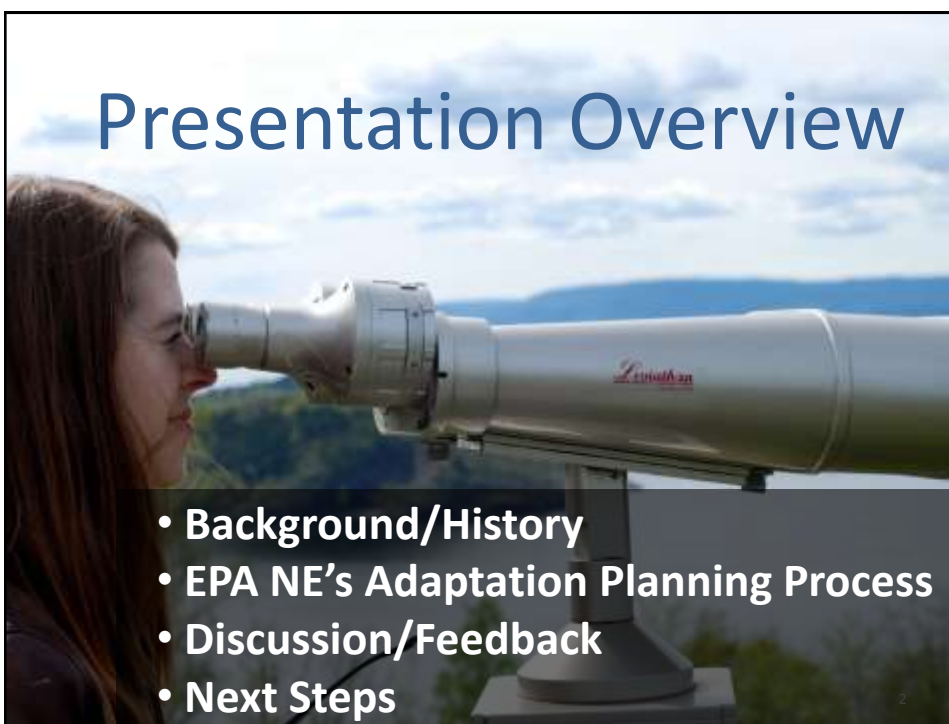


**EPA New England's  
Regional Climate Change  
Adaptation Plan**

March 28, 2013 NEWMOA Meeting



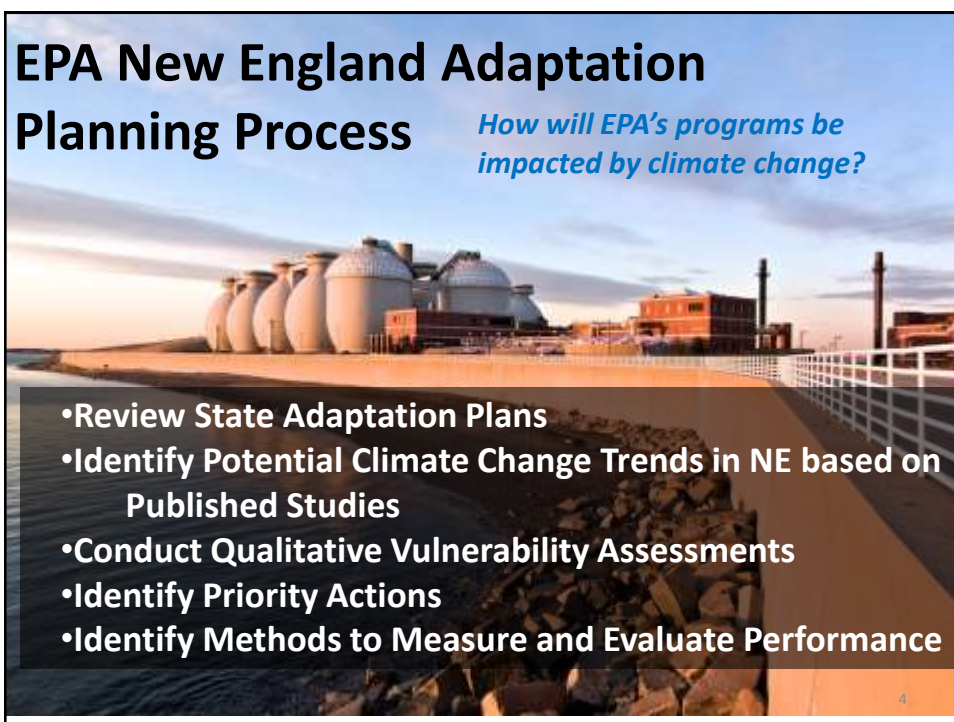
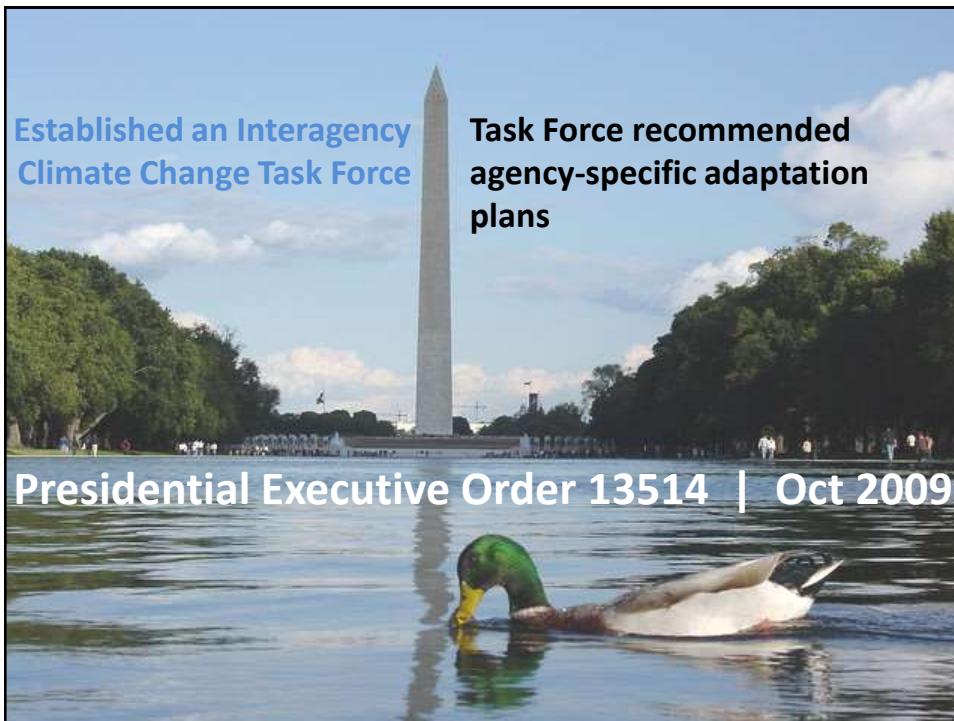
1



# Presentation Overview

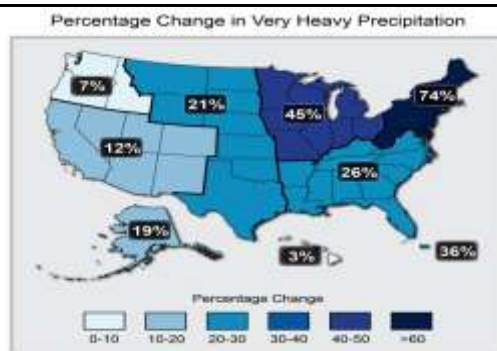
- **Background/History**
- **EPA NE's Adaptation Planning Process**
- **Discussion/Feedback**
- **Next Steps**

1



Background: Climate Change in New England

# Increases in amounts of very heavy precipitation 1958 to 2011



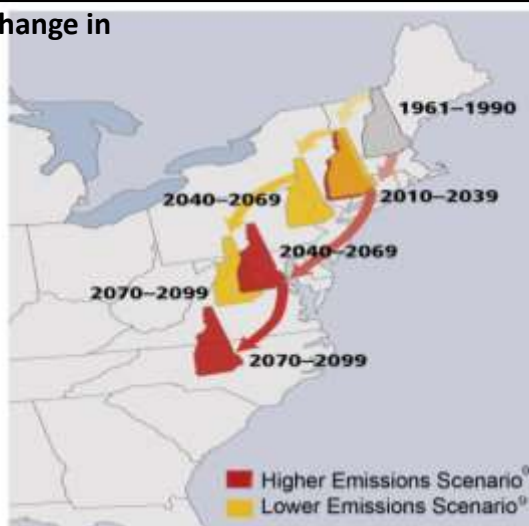
Vermont's  
Route 4  
Aug 2011

Background: Climate Change in New England

Vulnerability  
temperature

Granite  
State

heat index



Hayhoe *et al.*<sup>300</sup>; Fig. from Frumhoff *et al.*<sup>234</sup>  
 Yellow arrows track what summers are projected to feel like under a lower emissions scenario<sup>31</sup>, while red arrows track projections for a higher emissions scenario<sup>31</sup> (referred to as "even higher" on page 23). For example, under the higher emission scenario<sup>31</sup> By late this century residents of New Hampshire would experience a summer climate more like what occurs today in North Carolina.<sup>300</sup>





### Qualitative Vulnerability Assessment: Waste Programs



Entrainment and spreading of contaminated sediments due to higher river flows and the breaching or failure of dams

Damage to cleanup structures/operations, waste management facilities, and chemical and oil management facilities; and also impacts to uncontrolled sites





**We're seeking your input...**  
**How will climate change impact EPA's and States' Waste Programs?**

**Discussion**

- How are Northeast states addressing this?
- What vulnerabilities should EPA and the Northeast states be considering?
- Future planning and coordination?



## NEXT STEPS

- Consider comments that we have received from stakeholders
- 4/1/13 Submit a draft adaptation plan for the Region
- Review and make changes based on EPA program and regional input
- 6/30/13 Submit plan to CEQ



**Thank You !**

**Contact Info** 

John Podgurski  
Land Revitalization and Green  
Remediation Coordinator  
US EPA New England  
Office of Site Remediation and Restoration  
[podgurski.john@epa.gov](mailto:podgurski.john@epa.gov)  
617-918-1296

12

Salisbury, VT Road Post-flood 2008; [www.flickr.com/photos/adamfranco/2805323508/](http://www.flickr.com/photos/adamfranco/2805323508/)

Binoculars [www.flickr.com/photos/gcbb/2465054692/](http://www.flickr.com/photos/gcbb/2465054692/)

Precipitation Map [www.globalchange.gov/publications/reports/scientific-assessments/us-impacts](http://www.globalchange.gov/publications/reports/scientific-assessments/us-impacts)

New Hampshire Temp - Cam Wake UNH

King Tide – EPA

MWRA Deer Island [www.flickr.com/photos/rawhead/4376312654/](http://www.flickr.com/photos/rawhead/4376312654/)

Smoke Stack – EPA

New England Ariel View – Credit: NASA

MassDEP Fisherville Mills flooded cleanup site [www.flickr.com/photos/massdep/6512262969/](http://www.flickr.com/photos/massdep/6512262969/)

Alstead, NH 2005 – EPA

Snow Drops [www.flickr.com/photos/demonsub/6918044293/](http://www.flickr.com/photos/demonsub/6918044293/)