



Greg Beyke, PE  
VP –Technology Development  
TRS Group, Inc.  
thermalrs.com

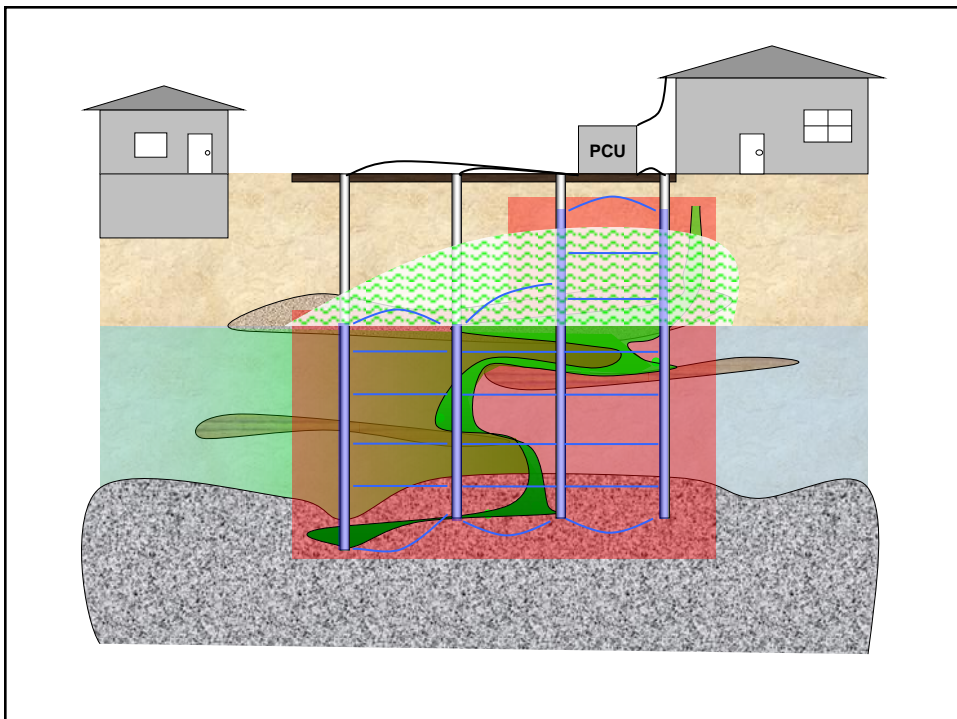
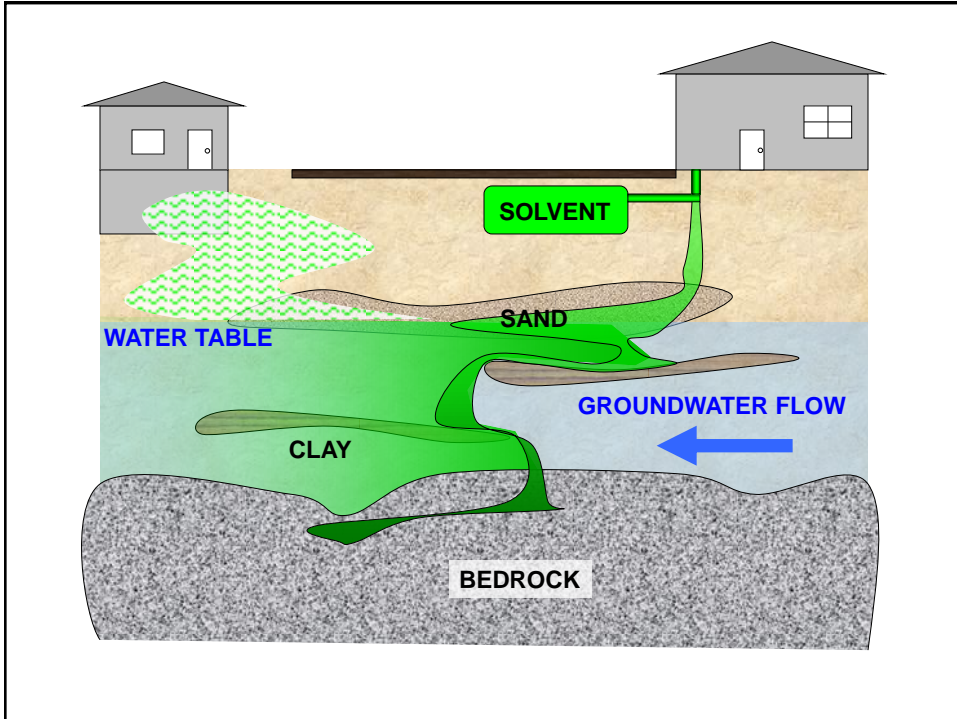
1

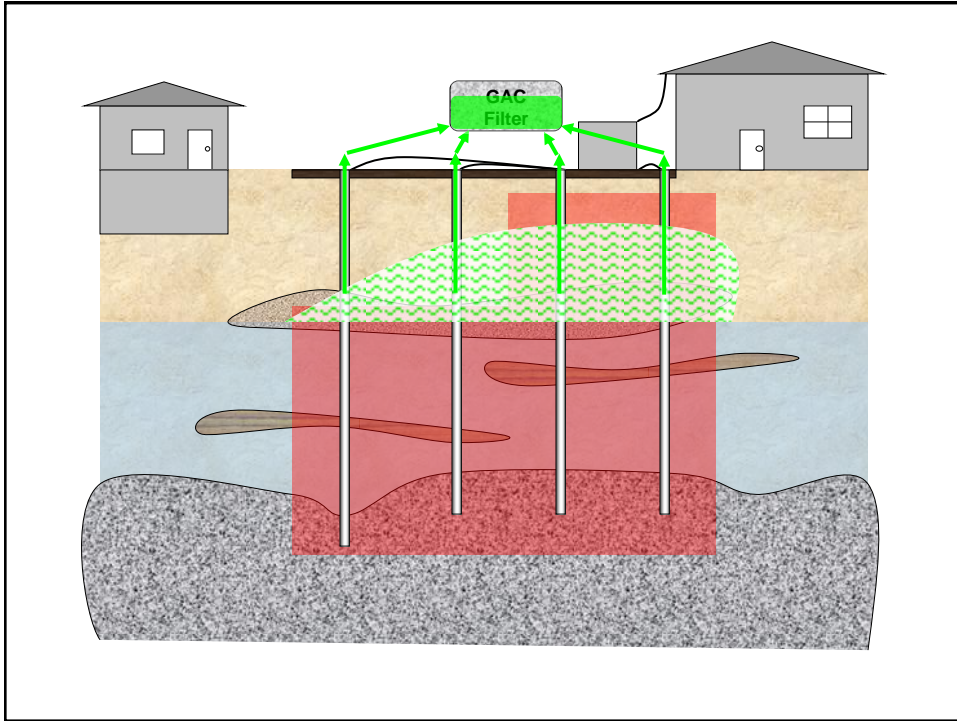


## **Electrical Resistance Heating**

- Treatment of VOCs in groundwater, soil, and sedimentary bedrock.
- Concentration reductions of 95% to 99.9% are commonly achieved with four to eight months of operation, with no rebound.
- TRS offers guarantees of remediation effectiveness for soil, rock, and groundwater.

2






## Electrode Types

- Sheet piles
- Angled
- Horizontal





**TRS**  
Accelerating Value

## ERH Surface Equipment





Photo  
Courtesy of  
Brown and  
Caldwell

7



**TRS**  
Accelerating Value

## Why Electrical Resistance Heating?

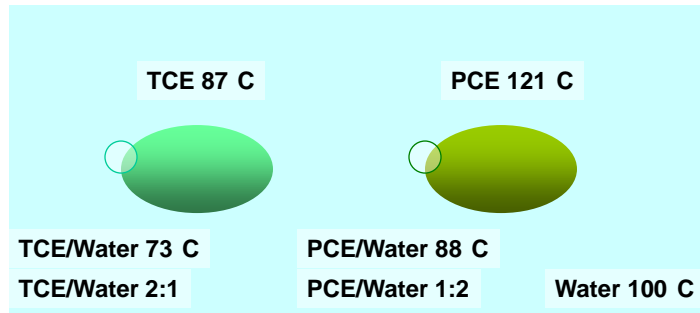
- Steam is produced *in-situ*
- Heating is uniform with no bypassed regions
- Equally effective in the vadose, saturated zone, and sedimentary bedrock
- Heating is rapid yet gentle
- No soil desiccation
- Preferentially heats tight soil lenses and DNAPL hot spots

8



## Boiling Temperature and Dalton's Law

- A substance boils when its vapor pressure is equal to the ambient pressure

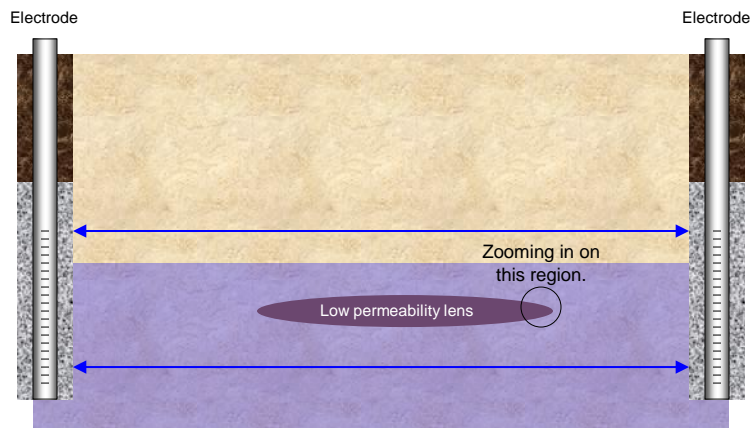


What about the vadose zone?

9



## In-Situ Steam Generation

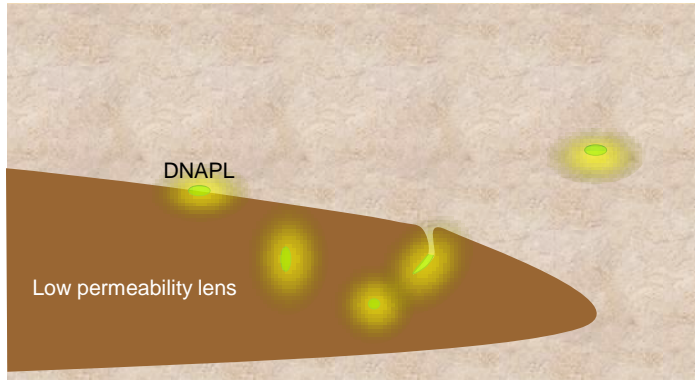


Current flowing between electrodes heats soil directly.

10



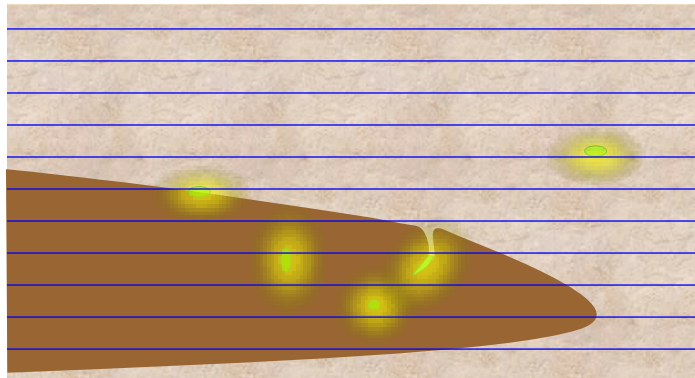
# In-Situ Steam Generation



11



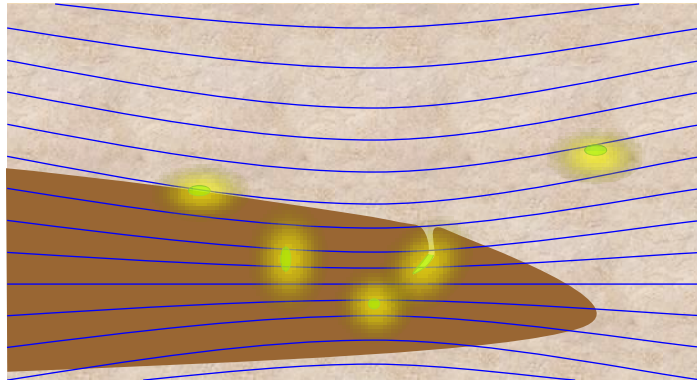
# In-Situ Steam Generation



12



# In-Situ Steam Generation

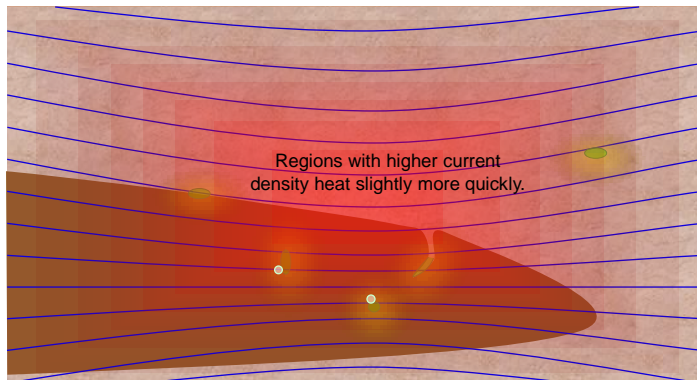


Low permeability lenses and CVOC hot spots attract current.

13

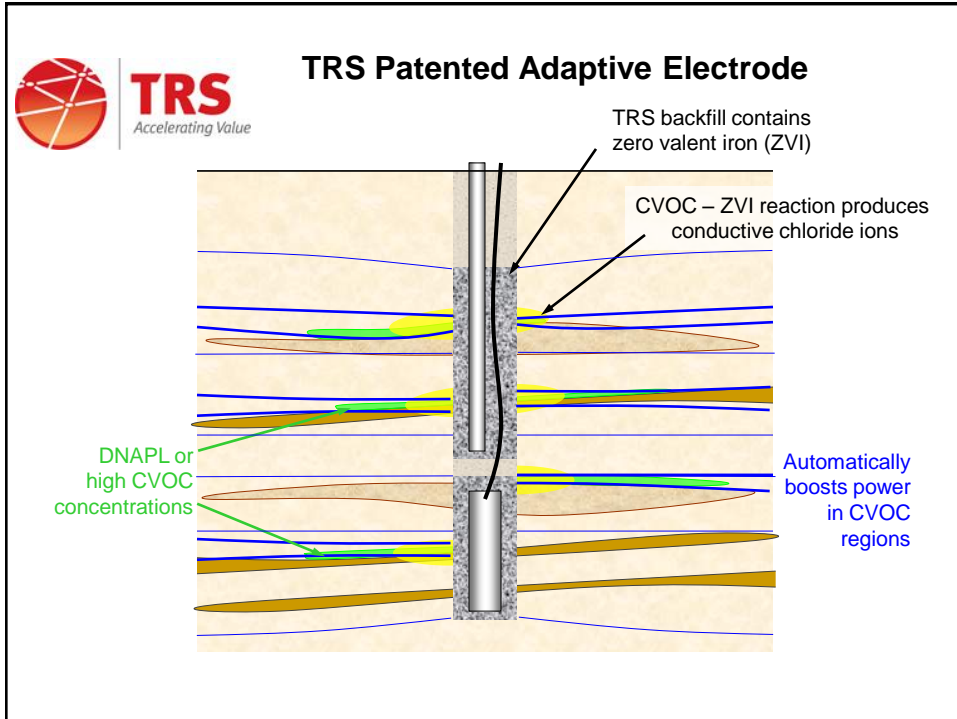



# In-Situ Steam Generation



Steam bubbles form more quickly at NAPL due to interfacial tension and reduced boiling temperatures. Typically form 500-1000 pore volumes of steam *in situ*.

14



 **TRS**  
Accelerating Value

## Why Electrical Resistance Heating?

- Because steam is produced *in-situ*, ERH is more tolerant of heterogeneity than any other remediation technology.
- It doesn't matter if:
  - The subsurface is clay
  - The subsurface is gravel
  - The subsurface is interbedded clay and gravel
  - The subsurface is vadose, perched water, or saturated

16





## Heating Weaknesses

- Peat or high organic carbon – granular activated carbon is used to adsorb VOCs because of the bonding between them\*
- Oil or grease as a co-contaminant (Raoult's Law)\*
- “Pancake sites” (big area, thin depth) – minimum 10ft treatment interval
- Fuel sites – other options and tend to be pancakes

### ERH Weaknesses

- Landfills – ERH is more uniform in natural materials
- Fractured igneous rock – no experience yet
- ERH chases CVOC contamination (strength?)

\* Weakness shared with other *in situ* technologies.

17



## Reasons to Heat Low Volatility NAPLs

- Reduce NAPL viscosity
- Reduce NAPL specific gravity – change DNAPL to LNAPL
- Steam bubble floatation
- Thermally enhanced bioremediation polish
- Strip out the more volatile and toxic components, leaving an inert and non-mobile soil particle stain

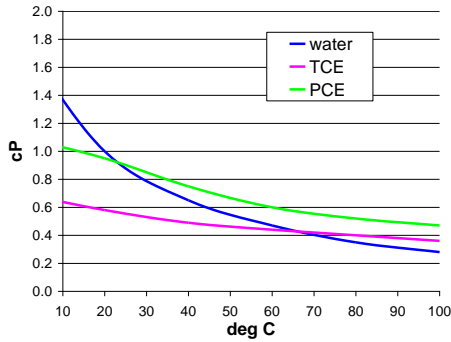
18



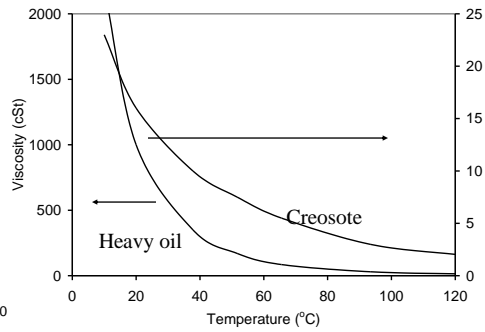
**TRS**  
Accelerating Value

# NAPL Viscosity

Absolute Viscosity of VOCs



SVOC

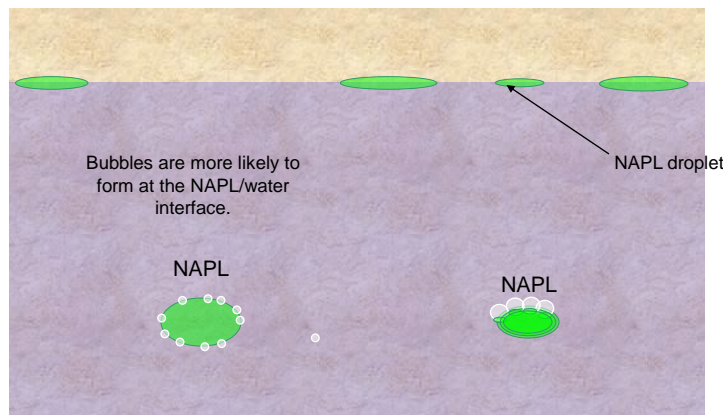


SVOC graph  
courtesy of  
Dr. Gorm Heron




**TRS**  
Accelerating Value

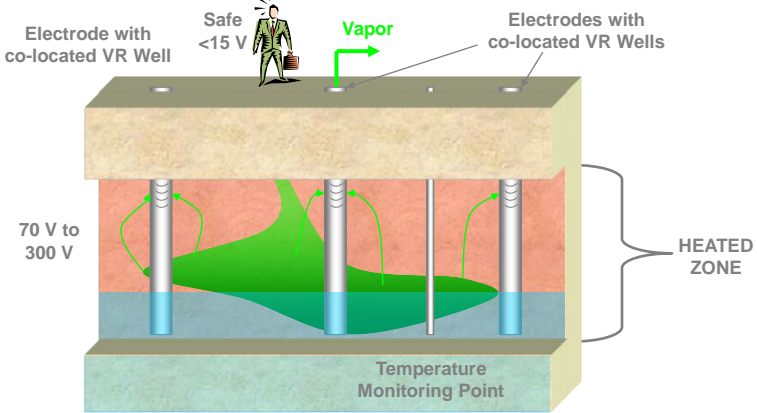
# Steam Bubble Floatation




"Life preserver" of small bubbles lift NAPL to groundwater surface.  
Or small bubbles break away and lift NAPL droplets.

20

 **Electrical Resistance Heating**



1. Soil particles act as electrical resistors
2. Steam generation is uniform through the heated zone
3. Discrete intervals can be heated

 **Applications**

- Low permeability & heterogeneous lithologies
- DNAPL & LNAPL cleanups by aquifer and smear zone heating
- Heavy hydrocarbon mobilization
- Degradation enhancement (hydrolysis, bio)
- Remediation underneath operating facilities, in the presence of buried utilities

22



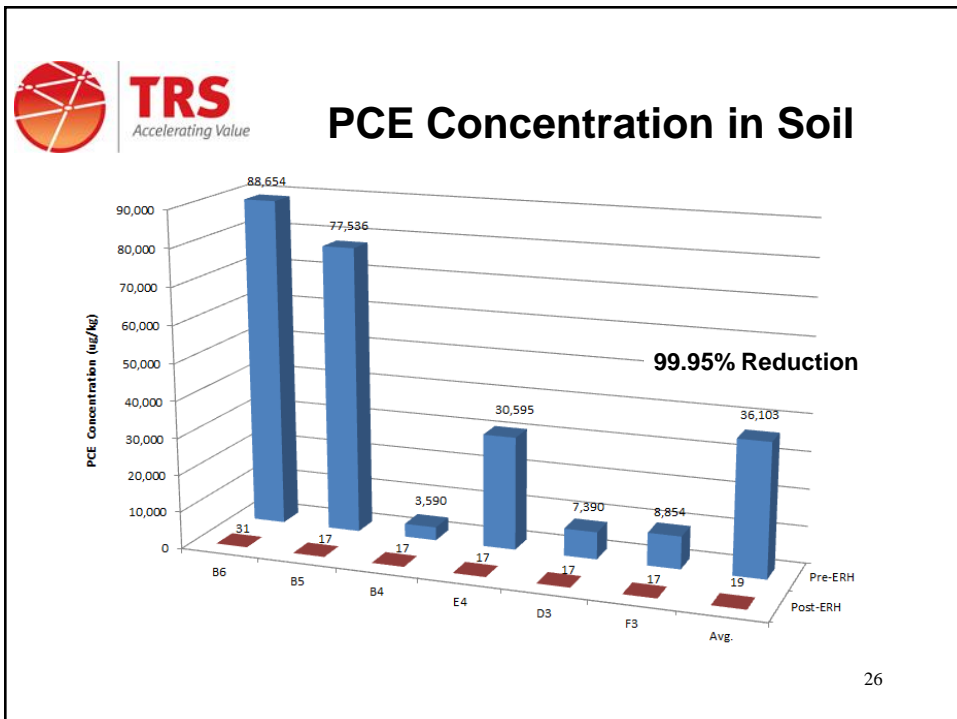
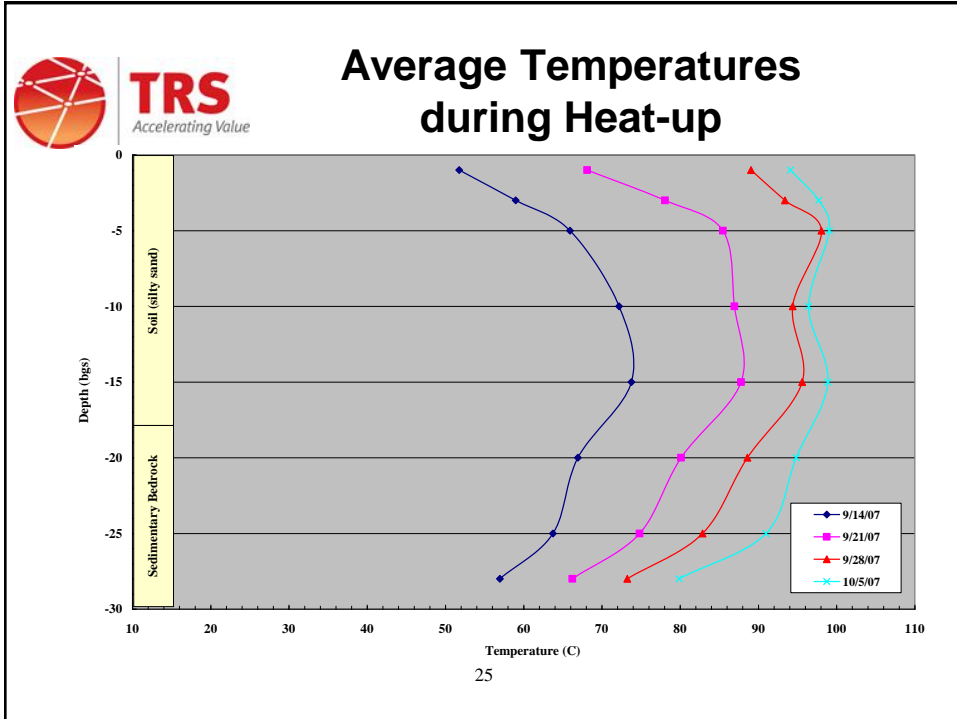
**TRS**  
Accelerating Value

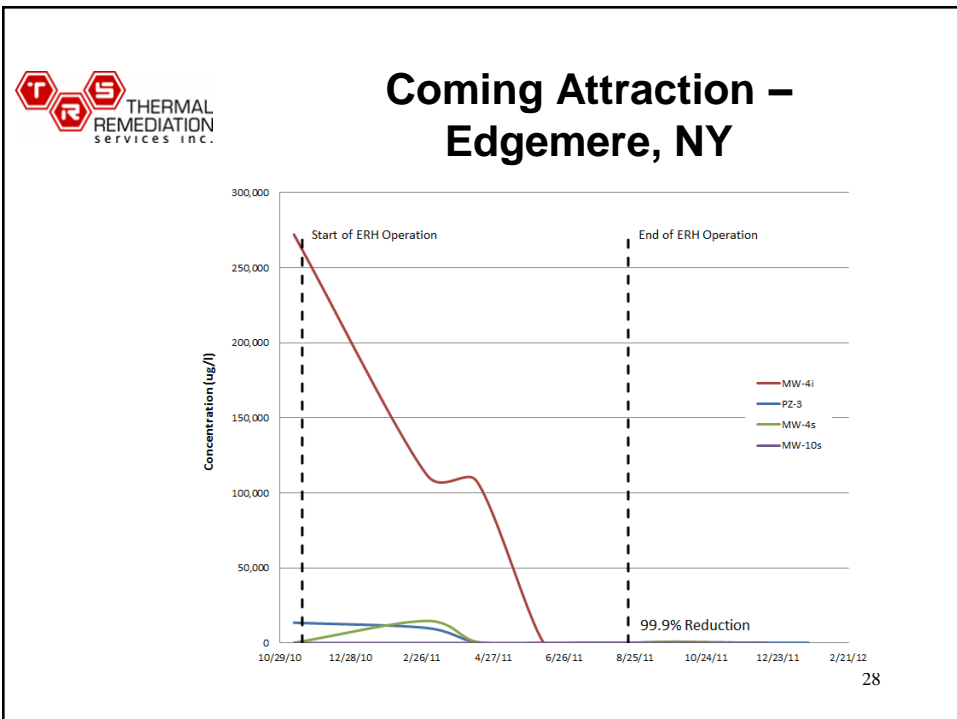
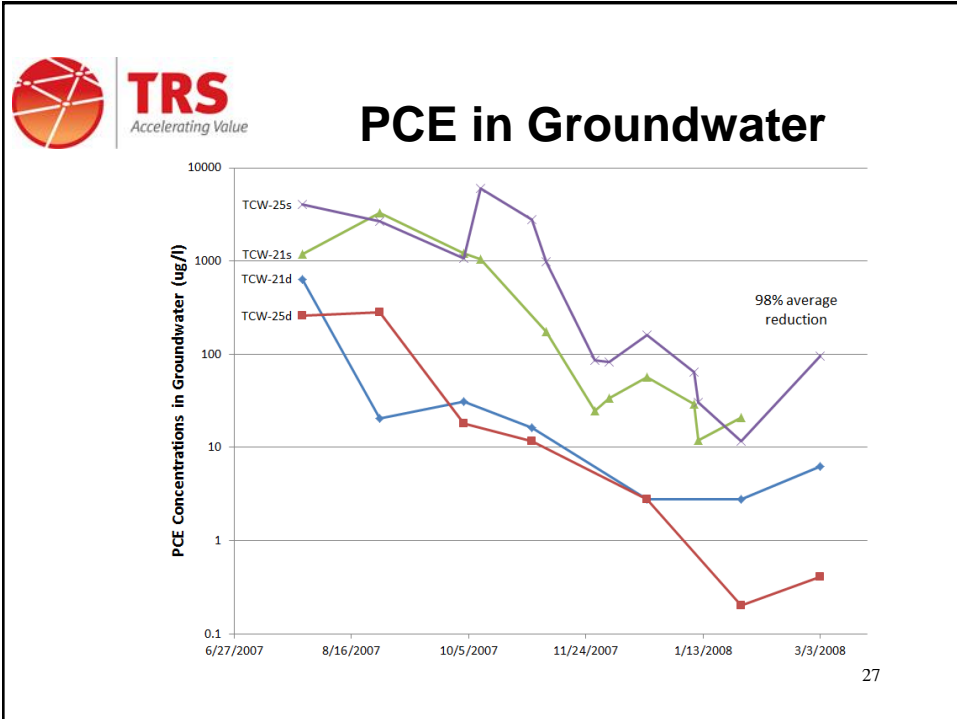
## Dry Cleaner – Fair Lawn, NJ

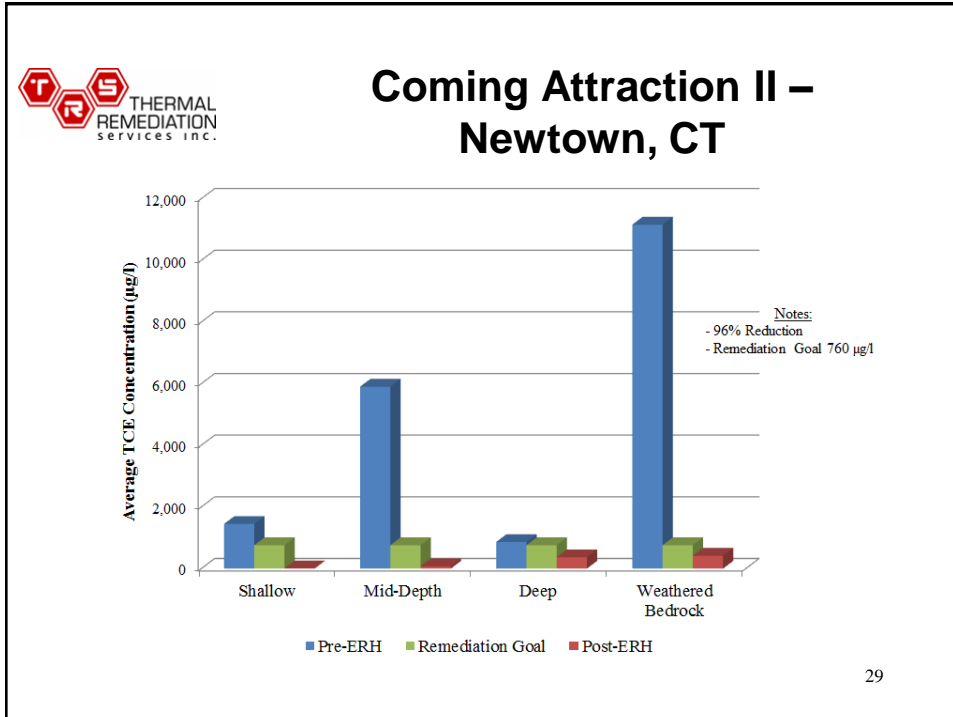
- PCE in Soil, Sandstone, and Groundwater
- Treatment area 6000 ft<sup>2</sup>, depth 0.5 to 26-ft bgs, 5,000 yd<sup>3</sup>
- Glacial till with fractured sandstone bedrock at 16 ft bgs
- GAC for vapor treatment
- Baseline: Up to 288 mg/kg PCE in soil
- Remedial goal: PCE <1 mg/kg in soil

23





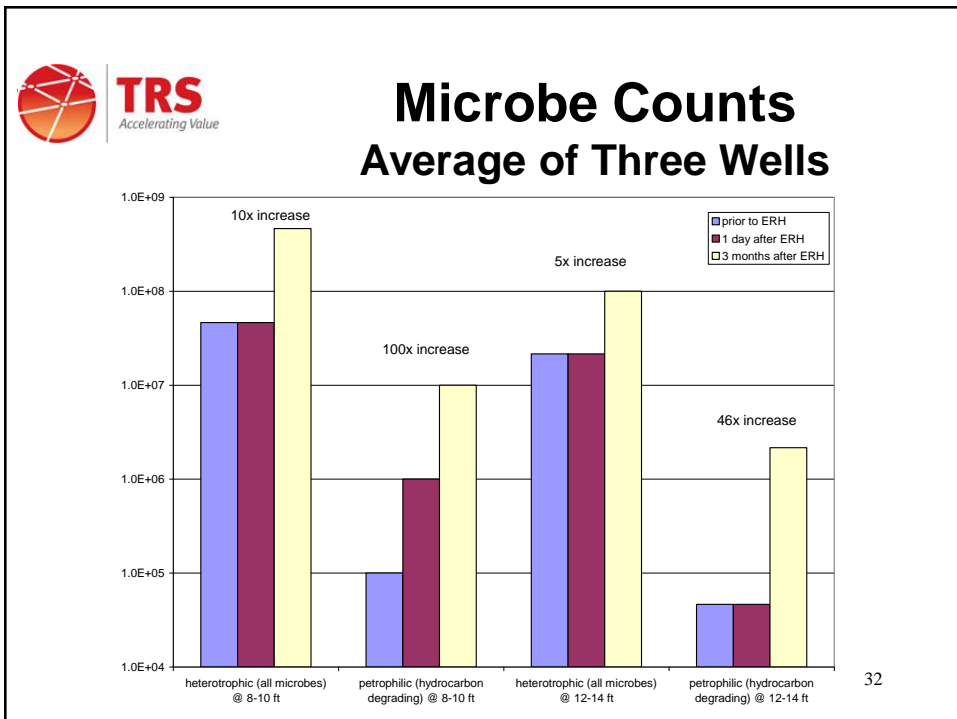
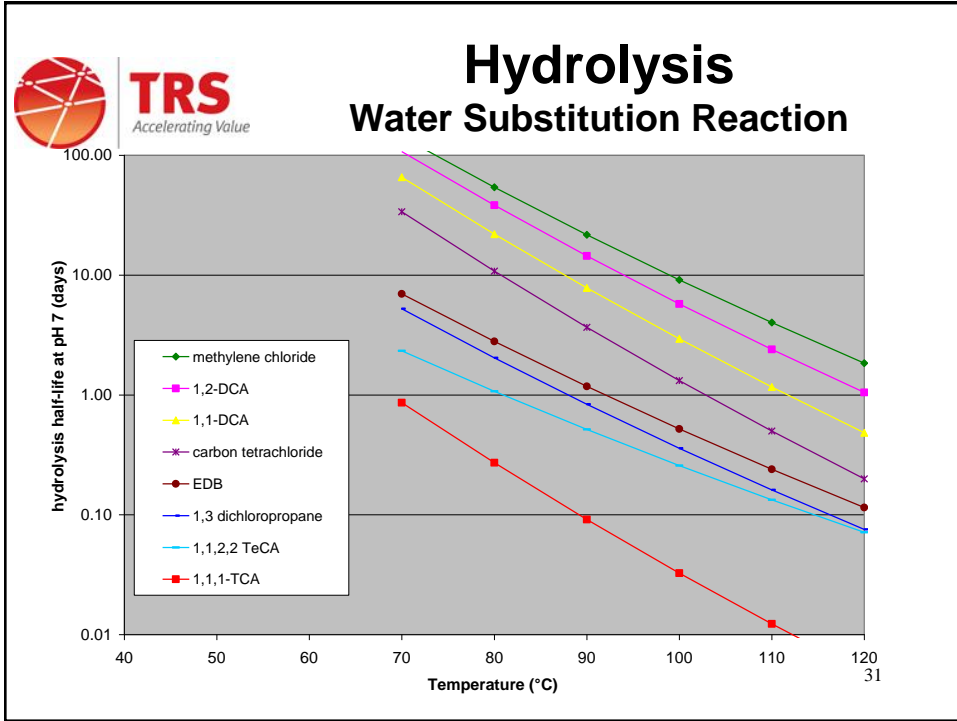




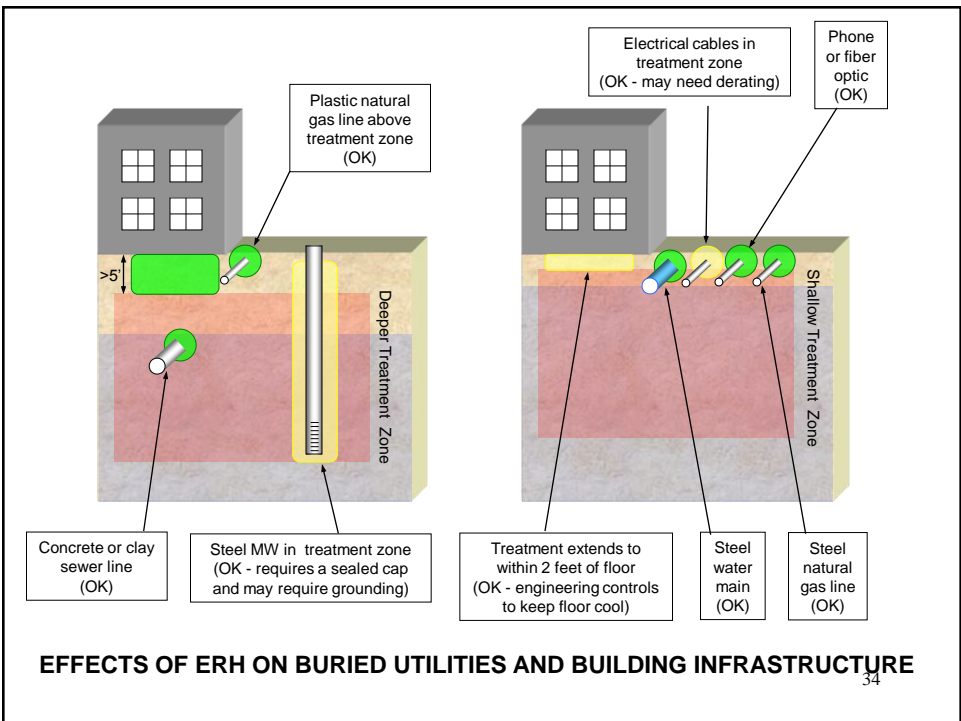
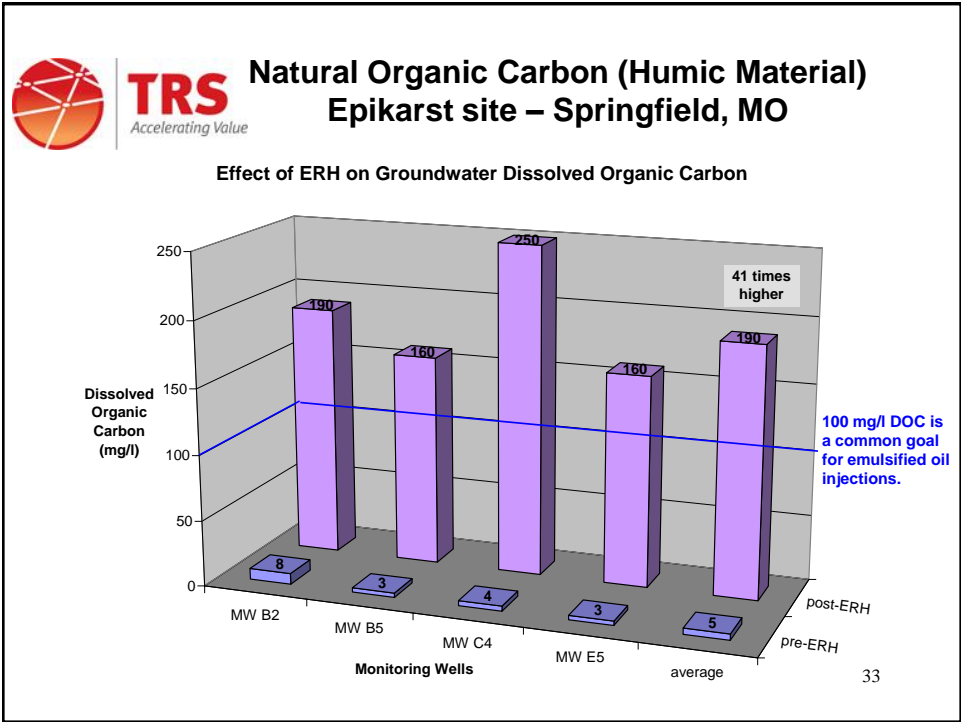
## Polishing Mechanisms

- Hydrolysis of Halogenated Alkanes
  - Compounds such as TCA have a hydrolysis half-life of less than one day at steam temperatures.
- Iron Reductive Dehalogenation
  - Steel shot used as electrode backfill provides an iron source for reductive dehalogenation (iron filing wall)
- Temperature Accelerates Reactions
  - The above reaction rates are increased by factor of thousands at 100°C (Arrhenius Equation)
- Bioremediation by Thermophiles
  - Dehalogenating bacteria *Dehalobacter*, *Desulfuromonas*, and *Desulfotomaculum* prefer 40-80°C
  - Dehalogenating bacteria *Dehalococcoides* prefer 30°C

30









Electrical Resistance Heating uniformly heats the subsurface and removes VOCs from all soil types, both above and below the water table. Good for your “tough sites”.

## Questions?

Greg Beyke  
Thermal Remediation Services  
(615) 791-5772  
thermalrs.com