

TCE Vapor Intrusion: State of the Science, Regulations, & Technical Options Workshop

Case Studies in Massachusetts

**Northeast Waste Management Officials
Association Seminar
April 2015**

Gerard Martin, MassDEP



MassDEP TCE VI Case Study #1

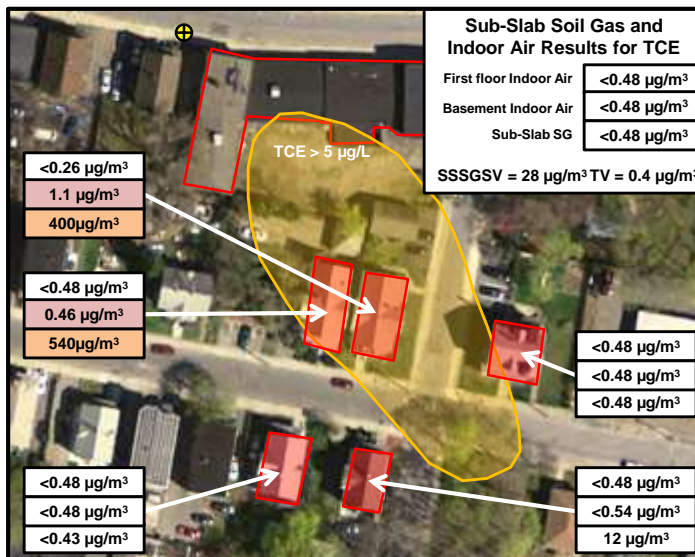
- Mixed commercial and residential setting
- Former jewelry manufacturing facility
 - Localized incidental releases associated with TCE drum storage area
- Property acquired by city through tax foreclosure
- Immediate Response Action conducted to assess TCE in groundwater above the Groundwater Category GW-2 Standard



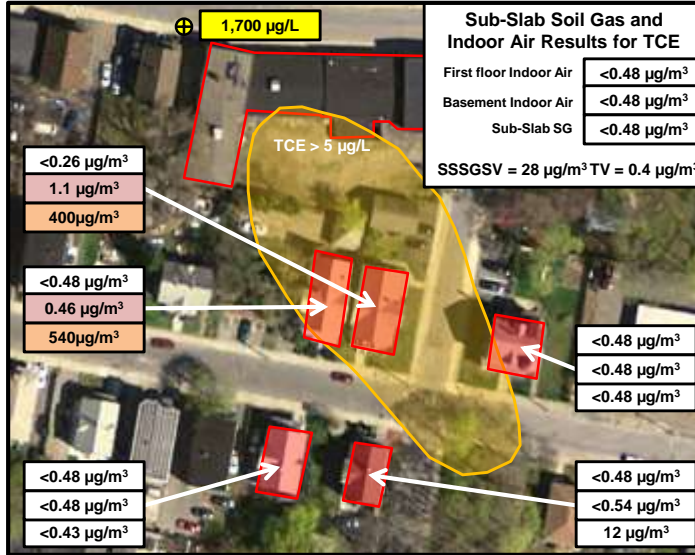
MassDEP TCE VI Case Study #1



MassDEP TCE VI Case Study #1



MassDEP TCE VI Case Study #1



MassDEP TCE VI Case Study #1

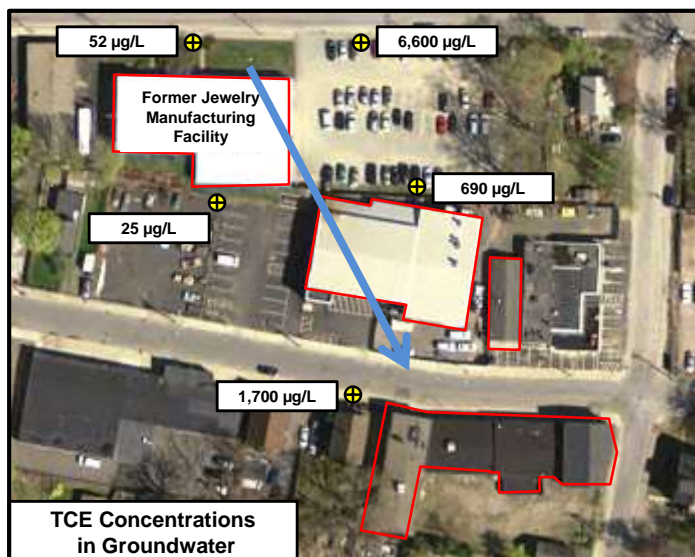


MassDEP TCE VI Case Study #2

- Former jewelry manufacturing facility upgradient of Case Study #1 location
- MassDEP issued Notice of Responsibility to facility owner



MassDEP TCE VI Case Study #2



MassDEP TCE VI Case Study #2

- Downgradient Property Status submitted indicating contamination was coming from upgradient
- Downgradient Property Status under review
- Looked further upgradient



MassDEP TCE VI Case Study #2



MassDEP TCE VI Case Study #3

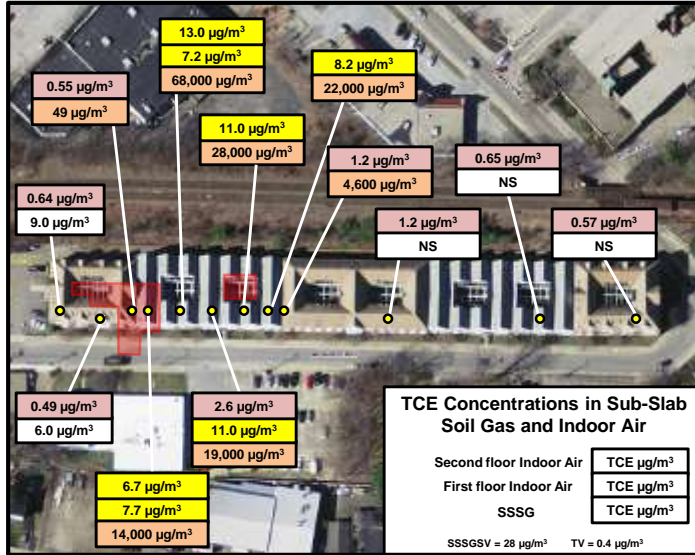


MassDEP TCE VI Case Study #3

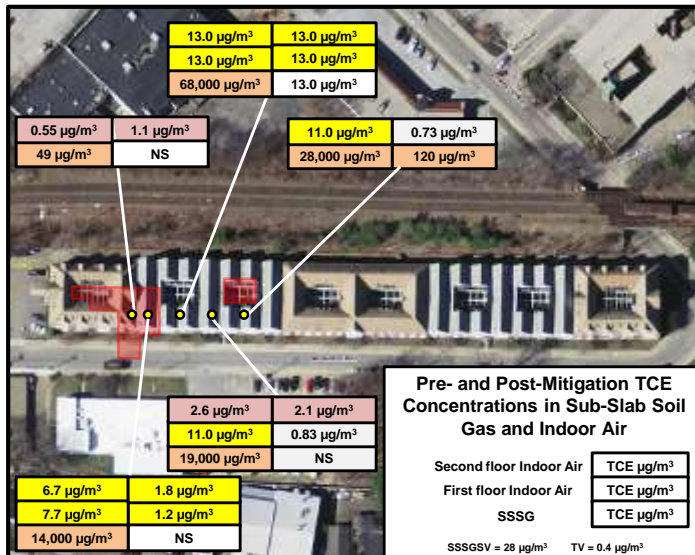
- Another former jewelry manufacturing facility/metals refinery
- Upgradient of Case Studies #1 and 2 locations
- MassDEP issued Notice of Responsibility/Request for Immediate Response Action to facility owner
- Immediate Response Action Plan submitted



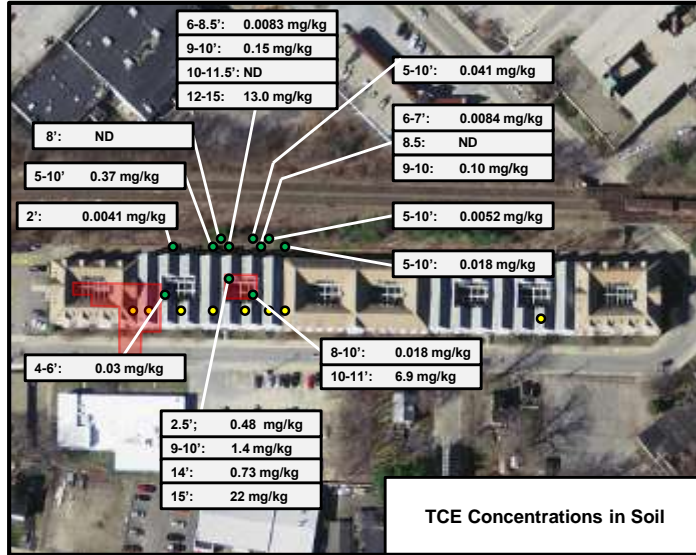
MassDEP TCE VI Case Study #3



MassDEP TCE VI Case Study #3



MassDEP TCE VI Case Study #3



MassDEP TCE VI Case Study #3



MassDEP TCE VI Case Study #4



MassDEP TCE VI Case Study #4

- Current Daycare Facility near and downgradient of several sources
- MassDEP collected indoor air samples and indoor air impacted with TCE
- MassDEP conducted Risk Assessment
 - TCE was at concentrations below the No Significant Risk level, but above MassDEP's Indoor Air Residential Threshold Level



MassDEP TCE VI Case Study #4

- Issued Notice of Responsibility to owner of Daycare Facility
 - Even if subject to Downgradient Property Status, owner must conduct Immediate Response Actions

